



Magnetic Front Grill Inserts For the CAN-AM SPYDER 2020+ R/T Installation Instructions

****Please read thoroughly before proceeding with installation in order to ensure proper fit & functionality****

KIT LIST:

(2) steel grill inserts
(2) 90 degree magnetic brackets
(2) 125 degree magnetic brackets
(1) pic tool
Alcohol wipes
3M primer pads
Hand Sanitizer/soap

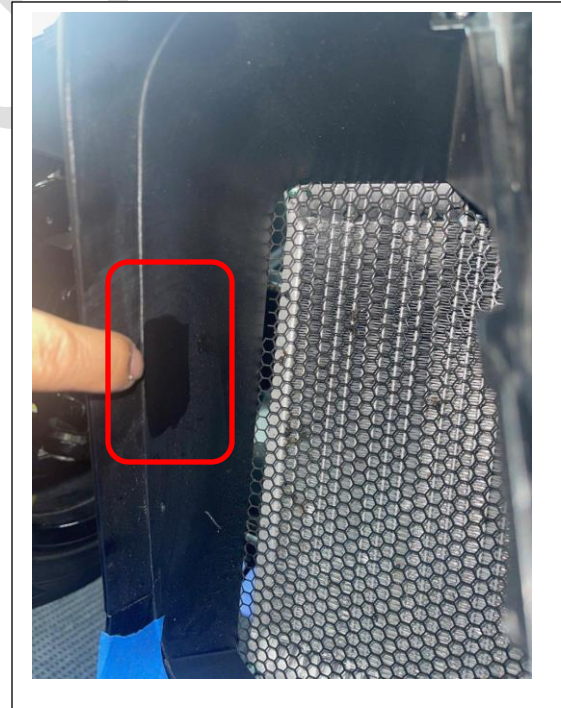
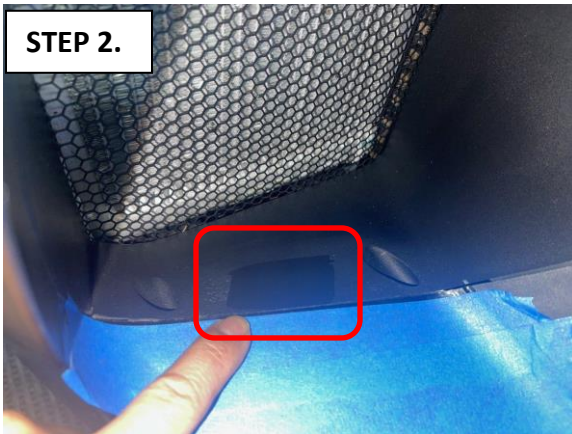
****Before beginning the installation, ensure that the front of the fairing is clean and free of all dirt and oil. ****

Use painter's tape to cover the area depicted in **STEP 1.** picture to prevent any scratches to

STEP 1.



STEP 2.



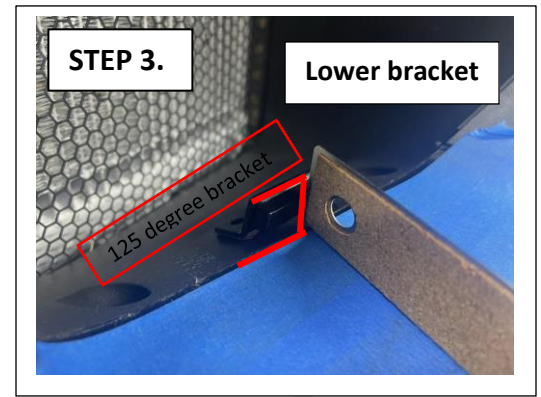
The (4) magnetic brackets provided in your kit will be attached to the inner fairing, depicted in red box in **STEP 2.** Pictures, with the 3M tape that is pre-installed on the brackets.

After you determined the bracket attachment points, clean the (4) areas with the alcohol pads provided and let air dry. Once the alcohol has dried, wipe the same areas with the primer pads provided and let dry.

Begin install with the lower bracket. Use the 125 degree angled bracket depicted in **STEP 3** picture. Use a straight edge metal ruler as a guide to line up the top edge of the magnet where the tape and the crease in the fairing meet. Remove the red protective strip from the bottom of the bracket and install pressing firmly and holding in place for a few seconds.

The 3M tape will hold the brackets in place but a set of screws have been provided as another option for install or reinforcement.

Repeat the process for the vertical sides using the 90-degree angled bracket.



STEP 4. **ADD SOME HAND SANITIZER OR HAND SOAP ON THE RUBBER TRIM EDGING TO ACT AS LUBRICANT FOR EASIER INSTALLATION**

(1) Take one of the grill inserts and begin to insert the top portion at an angle.

(2) Using the pic tool provided in your kit, continue to pull the inside corners toward you while making adjustments to the opposite side of the grill insert until it sits properly in the intake and against the magnet points. Repeat this step for the opposite side. **INSTALLATION IS COMPLETE**

