



TAC Design, LLC Magnetic Mirrors INSTALLATION



Package includes

6 magnets
6 plates
6 hex key bolts
6 washers

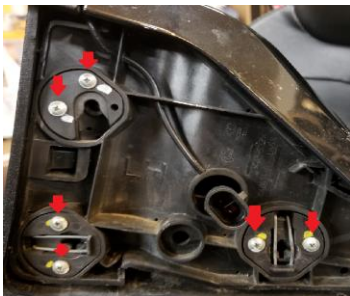
Tools Needed

13 mm deep well socket
5 mm hex key
Screw Driver
Box Cutter

1. Remove mirror from bike by holding down on the top of the mirror and gently popping the mirror from the clips in the front and at the bottom. Once mirror is out of the clips, slide mirror up to remove and disconnect the electrical connection.



2. Once mirror is removed. Remove all 6 screws that hold the factory plates on.



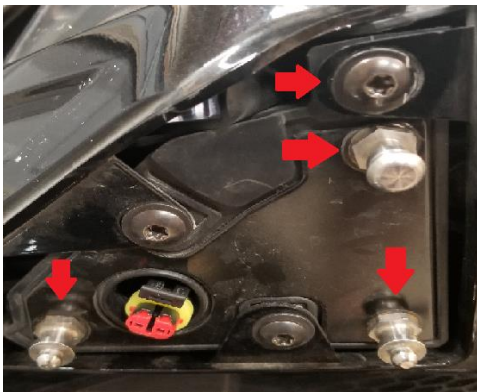
Best Practice: Only remove one plate at a time. The 6 screws will be reused for the new metal plates.



3. Mirror: Place the new metal plates one at a time into the slots, using the screws from step 3, where you previously removed the factory plates, secure the plates into the holes, again one at a time.



4. Bike: Remove the factory bolts from the bike using a 13mm deep well socket and remove the top T30 torx bolt. The T30 torx bolt will not be reused in the process. Discard or save the T30 torx bolt. Best Practice: Save T30 torx bolt, part can be used in other areas of the bike, if ever needed.



5. Remove 3 magnets, 3 bolts and 3 washers from the package. **CAUTION**, the magnets are powerful. The orientation will be: bolt, magnet, and washer (3 sets). **Discard large washer separating the magnets.** The large washers are only for shipping.





- Using a 5mm hex key, place the bolt, magnet, and washer into the holes, where the factory bolts were removed, and secure. Mirrors are now ready to be reinstalled.



- Install mirror: Secure the mirror with the new metal plates by hand and reconnect the electrical (secure electrical wires by dressing them back into the slot), then with **CAUTION** (magnets are powerful and will connect quickly) - line up the two bottom holes with the hex key bolt and gently guide the mirror onto the bike.



- Repeat process for the other side mirror.

Any questions or assistance call Tony at TAC Design at 614-507-3863.