



Nelson & Nelson Mfg.
5210 Stadium Blvd. Suite C
Jonesboro AR 72404
870-268-6393 : Cell 219-1019

Installation Instructions 6-2-22

Model RYK-SMNT

For all Ryker Models using the OEM Max Mount

Steps needed to install your Ryker Shad Trunk Mount.

DO NOT USE IMPACT DRILL ON BOLTS OR NUTS.



Complete Kit shown above.

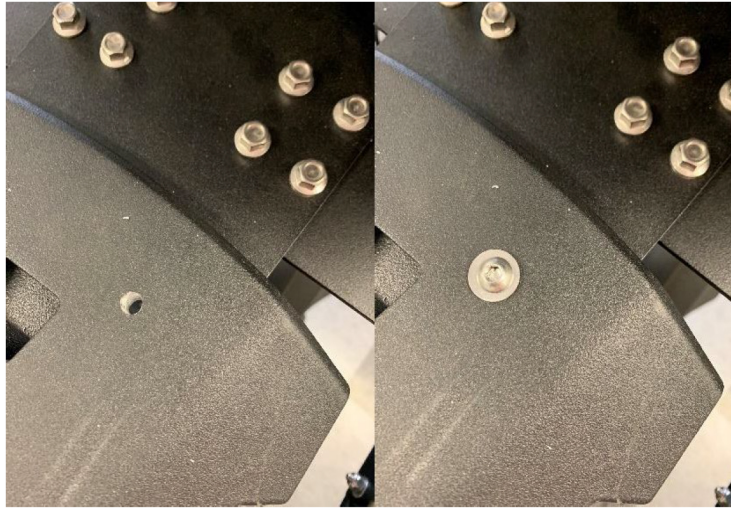
- 1.- Take the (4) 6mm flanged bolts and secure the Mount to the bottom of the Max Mount. The four slots shown below allows the Mount to be adjusted as needed.



When installing the new bolts use **Loctite Blue** Thread Locker on all bolts

If you plan on using the trunk for carrying heavier objects, remove the passenger seat and use the two supplied button head bolts in lieu of the 6mm bolts for the rear two bolts. To make them fit use a small right-angled drill on the underside of the max mount, drill out the two rear 6mm threaded stubs on the underside of the max mount shown below using a 1/4" drill bit now creating a 1/4" hole.

Do this on both rear side max mount holes. Then use the supplied bolts washers and locknuts to secure the trunk mount. This will help to support the additional weight. Finish by using two of the 6mm bolts on the front two max mount holes, then reinstall the rear passenger seat.



2.- Once the Mount is installed take the Shad Trunk Mount supplied by the Shad Kit and Install that mount to the metal Mount using the factory 6mm Bolts supplied with the Shad Trunk. You may choose two different lengths one length for the rear and one for the front.

With the Shad Trunk Kit as stated it comes with Hardware. You only need the 2 red plastic spacers shown at the front of the mount and 2 metal U-Brackets shown at the rear of the Mount. Notice the locations of these bolts and you will use the 4 slots below in **Red** to locate the position of the bolts. Place a spacer provided with the mount kit between the plastic trunk mount and the metal mount at each bolt location.

Place the front bolts through the **Red** plastic inserts then shorter bolts through the metal U-Brackets. Be sure to place a spacer between the Trunk Mount and the Mount as discussed above. Take the washers & Locknuts and secure the Trunk Mount to the Metal Mount making sure the Trunk Mount is aligned with the front edge of the Metal Mount.



3.- Your Trunk Mount is now installed.