

Thank you for purchasing the Ryker wheel chaser kit. Please read the instruction thoroughly as it will explain the 2 scenarios possible for installation.

SCENARIO #1 STAND ALONE KIT ONLY

Stand alone kit comes with: 3 metal rings, 1 set chaser LEDs, module with remote, 1 harness bag, 1 hardware bag. Zip ties are needed to secure LED strips & wiring (not provided). For the wheel kit portion you will use 1 of the 4 ports to connect all 3 wheel kit together. The other 3 ports will allow you to expand by adding kit 1, 2 and 3.

SCENARIO #2 ADD ON TO AN EXISTING TRICLED 1-3 KIT

If you've purchased TricLED Ryker Chaser kit 1, 2 and 3, you will be able to add on the wheel kit to without any additional module/remote. The 4th open port will be utilized to operate all three wheel chaser kit with 1:3 splitter.



Front Left shifter side, note LED wires always face towards the front of the Ryker, more on this on pg 4 after install.

The ring lip on front wheels faces the center of the Ryker



Front right throttle side

The ring lip on front wheels faces the center of the Ryker



Rear wheel

The ring lip on rear wheels faces the right side(throttle side) of the Ryker

TRICLED RYKER WHEEL CHASER RING 2019+
600/900/RALLY

PG 2



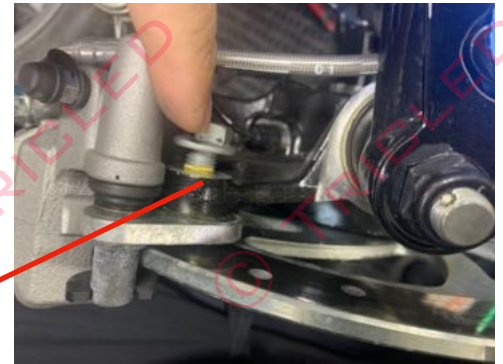
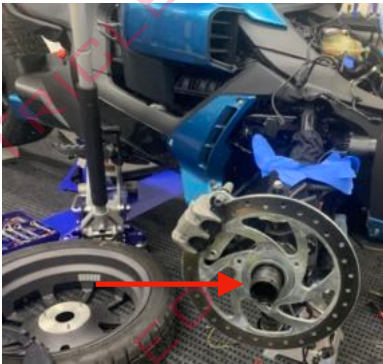
(3) 36" Extensions
1 of each is used on front wheels
(1) 36" extension for the rear wheel

49" + 36" extension for
Rear wheel to module

Connect 1:3 splitter on one of the
open port on module

1:2 splitter used to connect both
wheel led strips together

1 output for each wheel is
connected here



Remove front wheel using a 65mm
lug nut and remove front fender.



Remove the two bolts holding brake caliper from
the backside.



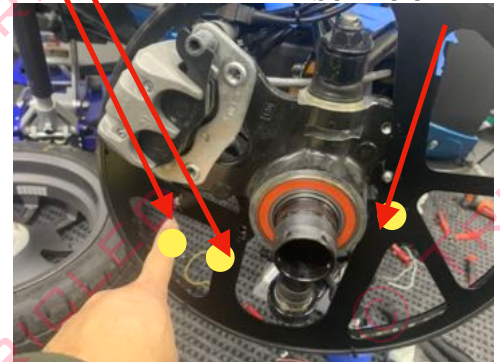
Move the brake caliper then
remove the brake disc.



Locate the hardware bag,
Replace 3 out of the 4 OEM fender
bolts from each fender.



While holding the brake caliper,
slip the wheel ring into position



Using the hardware provided,
insert 3 bolts into the fender hole
shown in the yellow above to hold
the wheel ring into position only
for now.



Place the brake disc back into
position.



Tighten the brake caliper down
with stock OEM bolts.



Position the fender back on and
remove the 3 bolts used to hold
the wheel ring earlier



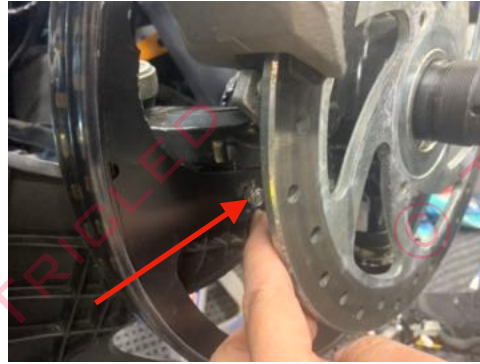
Re-insert the provided bolt with
washer through the bottom of the
front fender bracket. Insert the
factory OEM bolt back on the top
hole.



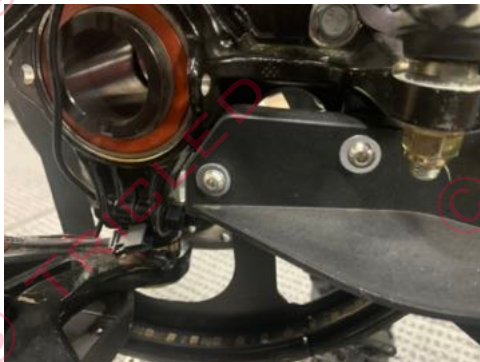
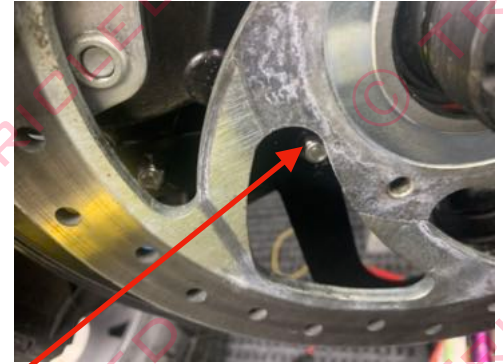
Factory original OEM bolt on top
and new supplied bolt on bottom



Tighten the back of the bolt with the provided locknut.



Repeat the same steps for rear 2 fender bolts, by replacing both bolts with the new provided stainless bolt, washer and locknut.



Front fender bracket rear two bolts. Use the provided hardware, screw, washer then through fender and wheel ring then locknut from backside of wheel ring.



As mentioned on pg 1, now that the wheel rings are installed it's time to install the LED's. There is a slot on the top of the FRONT wheel rings, this is a slot for the inside LED wires to come out.



Clean both inside & outside diameter surface with alcohol. Locate the marked LED spool, test fit inner and outer diameter with LED strip length. Be sure wire connection always faces the front of Ryker.

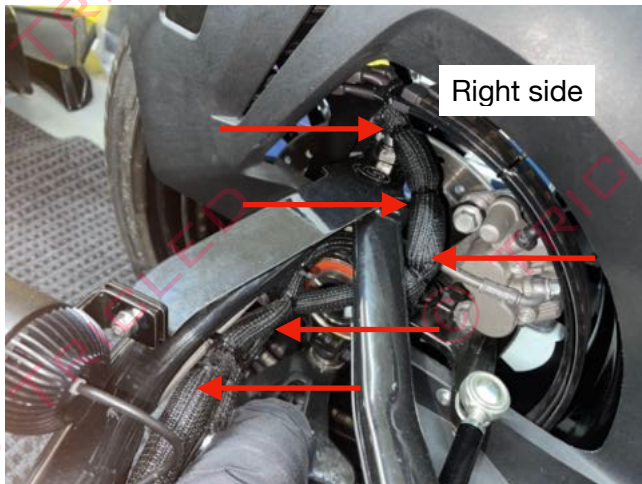
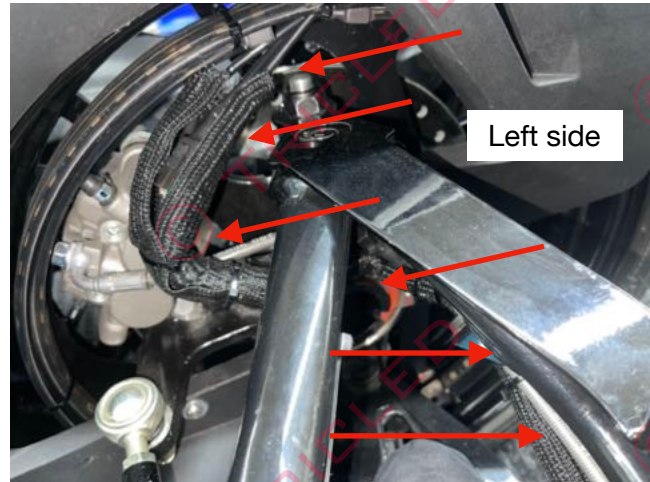
Once the LED is installed, use zip tie to secure it all around the ring by using the relief holes positions all around the ring. Secure the top two wire exits to the ring.

Using di-electric grease, connect the 1:2 splitter and join both LED strips together. Connect 36" extension and bring towards the module. Repeat for both front wheels.

Rear wheel uses the 49" extension to the 1:2 splitter connected to both LED and extend it to the module box.



Route the wire coming out of the front wheel near the top A Arm and secure with zip ties. Allow wire slack when the wheel are turned lock to lock. Run the wire extension to the module box.



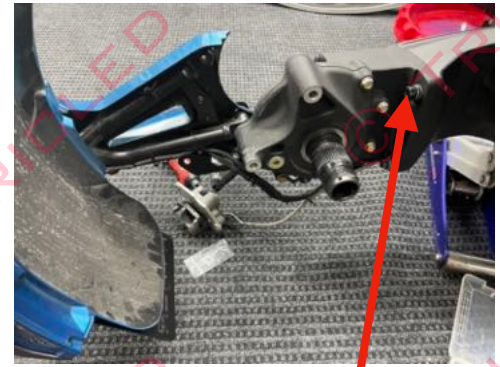
Check for wire clearances and zip ties are snug. Be sure to allow for wheel travel lock to lock so the wires do not get stretched/break.



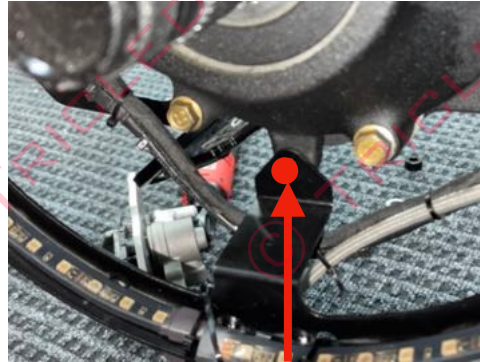
Remove the two rear caliper bolts



Use a 65MM socket to remove the center locknut. Move brake caliper aside and remove wheel.



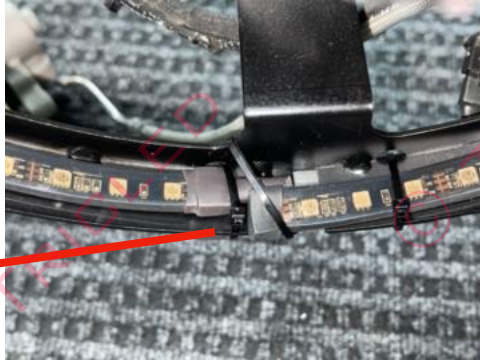
Loosen these two swing-arm attachment bolt, just a few turns to allow the new wheel rings to slide over the two bolts.



Locate the bottom tab, red dot shown, put a zip tie through the wheel rings and rear swing-arm; then zip tie all the factory wires along with the chaser wheel light wires here along the bottom



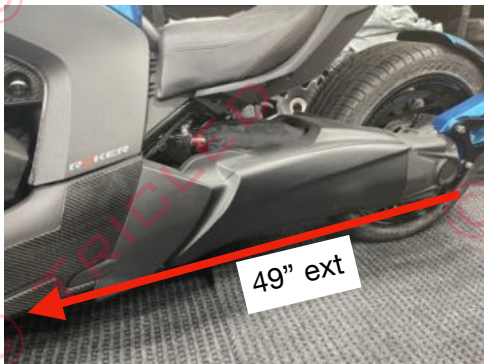
LED strip is applied with wires coming out and facing the front of your Ryker both sides. Be sure to test fit prior to adhering. Use zip ties to secure LED.



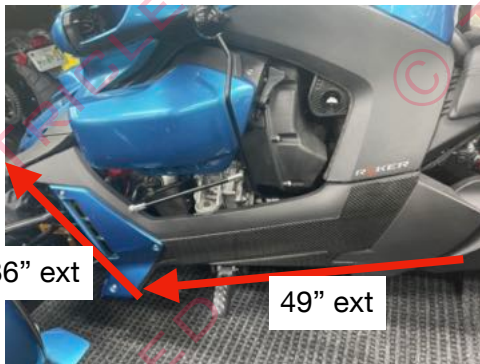
Pictured above is the bottom part of the ring. Notice wire exit is facing forward. There is a slot in the ring where you will slip the wire through the outside of the ring. LED for outside of the ring is applied the same way.



Zip tie both inside and outside Led harness together. There is only 1 strip on inside ring and 1 strip on outer ring. This combination will allow for a mirror like effect with double the brightness.



49" ext



36" ext

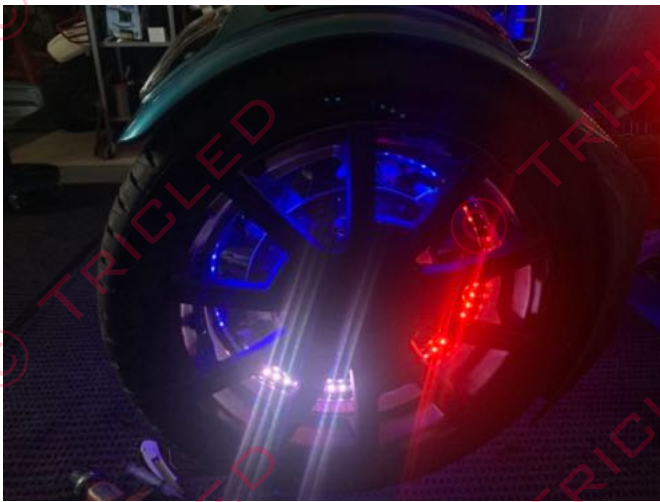
49" ext

The two LED strip in the rear will be joined by a 1:2 splitter and then use the 49" and 36" wire extension to reach the splitter on the module



If you already have the chaser kit then you will plug in the 1:3 splitter into the last open port and connect all 3 wheels to the splitter.

If installing the wheel kit as a standalone item, use the 1:3 splitter and connect it to one of the opening then connect all 3 wheels together. The other 3 ports is available to add kit 1-3 for future expansion.



When done, use your remote and test

Button functions

- A - Turn on and advanced forward 1 function
- B - Go back one function
- C - Each press will slow the speed and then back to fast mode
- D - Turns unit off



Black program push button

Lost or new remote programing

DO NOT push this button unless you are re-programming a new remote!!

IT IS NOT A RESET BUTTON!!

In order to reprogram the new remote with new module, follow these steps.

- Step 1 Remove all power from the module box that connects all your LED's for 10 seconds
- Step 2 Reconnect power
- Step 3 Make sure the module box has 12V power connected to it
- Step 4 Follow the steps below

Programming new chaser remote

12V Power to module with all LED off

Locate the black program push button(see arrow above) Push button once for 1 second then push again and hold until your LED's starts flashing a red light.

On new remote press A (pause 1 sec), B (pause 1 sec), C (pause 1 sec), D (pause 1 sec)

Once you hit (D) all the lights will turn off, this indicates programming sequence is finished.

Test your new remote