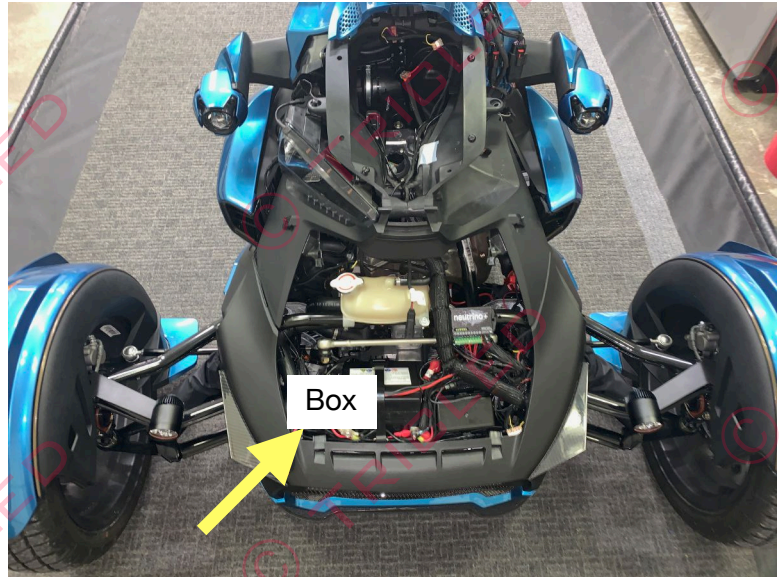


# RYKER RGB CHASER KIT 2. [TRICLEDD.COM](http://TRICLEDD.COM)

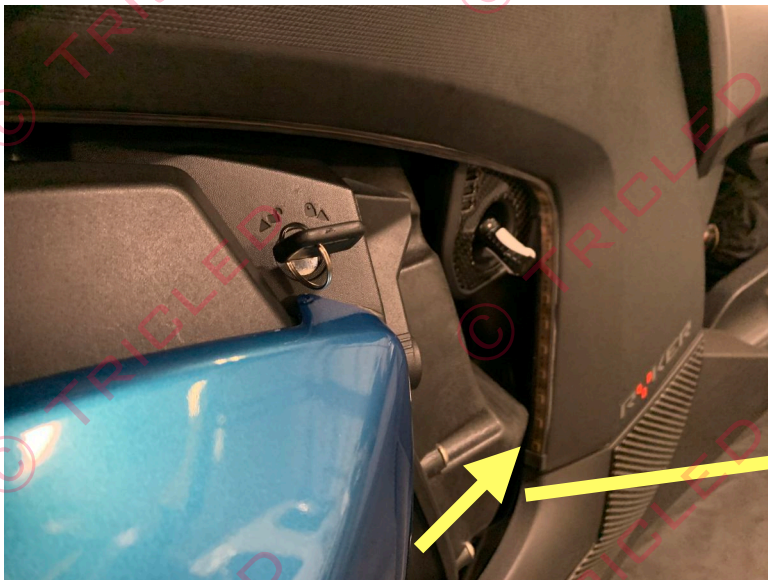


Contents for Kit 2  
Shown above  
(2) 34" smoke tube chaser strip

Not shown  
(1) 36" extension  
(1) 24" extension  
(1) 1:2 splitter  
Alcohol cleaner  
Primer

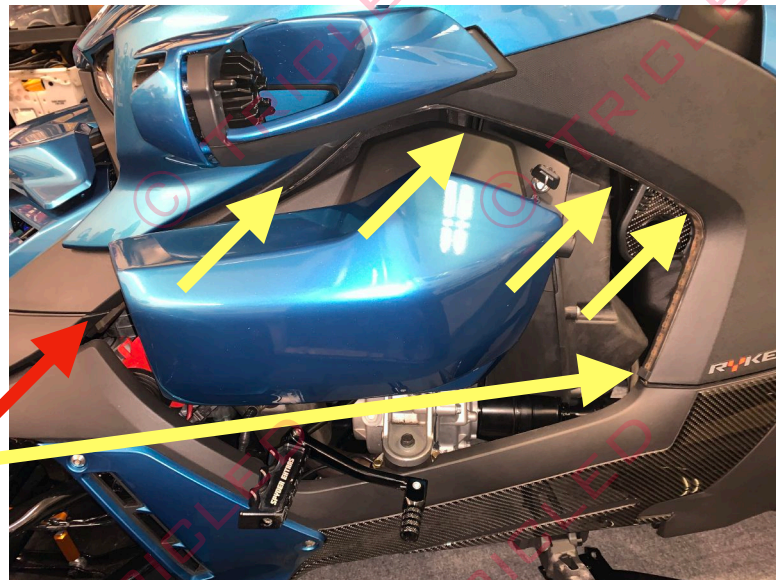


You will be making connections to the original module box. Use one of the open ports for kit #2



Test fit the LED along the edge, start where the yellow arrow and finish towards the front (red arrow)

Clean along this ridge with alcohol and let dry. Apply primer to the entire edge where you will apply the LED. Apply multiple coats. Once dry apply the LED starting at the yellow arrow with connector towards the front of the bike.



Repeat for right side. Connect the 36" extension to the left LED strip and route the wires to the right side (throttle side). Connect 1:2 splitter to right side LED and connect the left side extension to the 1:2 splitter.

Connect the 24" extension to the end of 1:2 splitter and connect extension to one of the open ports on the receiver module.

See kit #3 to light up under the seat and also rear swing arm