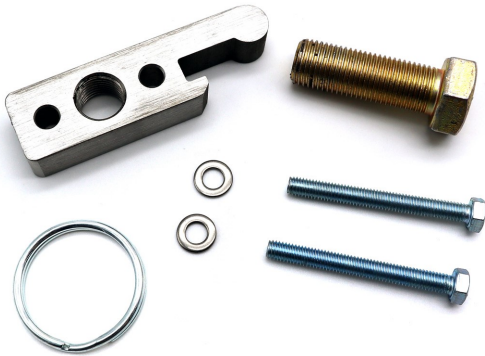




DDM-20-5
Polaris Slingshot Factory Steering Wheel Puller (non-Sparco)



The DDMWorks steering wheel puller for the factory Polaris Slingshot is the best puller available. It helps remove stuck on or hard to remove steering wheels and doubles as a bottle opener after the job is complete.

If you are pretty handy with tools the steering wheel can be removed in about 10 minutes, however we suggest that you schedule at least 30 minutes for the installation.

If you have any questions during the installation you can call or text (864) 907-6004. Email support is also available - Tech@ddmworks.com.

Tools Needed for Install **Packing List**

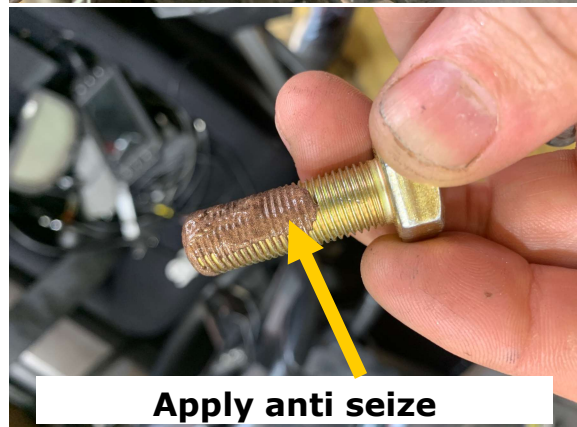
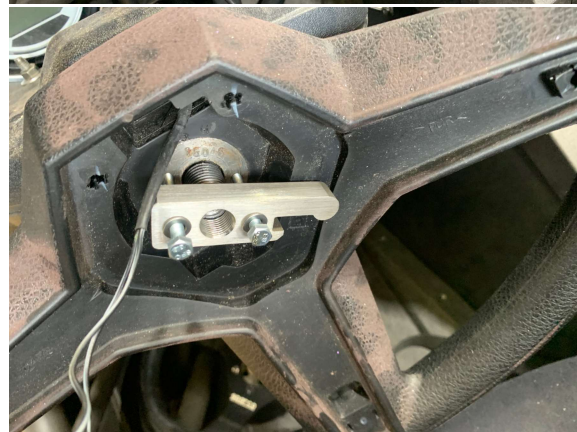
- Small Blade screwdriver
- 8mm socket and driver
- 3/4" socket and driver
- 15/16" Socket and driver

Qty	Part
1	DDM-20-5 Steering wheel puller
2	45mm long M5 bolt
2	M5 washers
1	1/2"x20 bolt 1.5" long
1	Ant seize packet
1	Keychain Ring

DDMWorks - 119A Hwy 183 Piedmont, SC 29673
 Tech Support Call, Text or Email: (864) 907-6004, Tech@DDMWorks.com

Removing the stock steering wheel

1. To remove the stock steering wheel, first you need to remove the horn section of the steering wheel. To do this use a blade screwdriver to get under the horn section and pull, it will pop off. Disconnect the wires going to the horn.
2. With the horn section off, use a 15/16" socket to remove the nut in the center of the steering wheel. You can spray a little penetrating lube to help remove the nut.
3. After the nut is removed, now place the main stainless steel portion of the puller over the shaft of the steering column. Put a washer over each of the M5 bolts and push through the puller and thread into the steering wheel. Snug the bolts up using the 8mm socket and driver, do not over tighten, just make sure the bolts are snug.
4. Apply anti seize to the yellow big bolt on the threads like the picture to the right. Then thread into the center of the steering wheel puller. Use a 3/4" socket to tighten the bolt, as you tighten the bolt, the steering wheel will start to slide off the shaft.



Installation of the hood vents

5. If the steering wheel does not start to slide off the shaft as you turn the center bolt, get some penetrating oil and spray along the shaft and let sit for 30 minutes, then attempt to tighten the bolt and get the steering wheel to come off again.
6. Once the steering wheel comes off, remove the center bolt from the puller, then remove the 2 M5 bolts from the steering wheel puller.
7. You can put away the puller to use again, or you can install the supplied key ring to use the puller as a key chain and bottle opener.
8. Pop open a cold one and congratulate yourself on a job well done! But don't drink and drive!



Congratulations! You have successfully removed your stock steering wheel!
Let us know how enjoyed this product with a review on our website or Facebook.



If you have any questions feel free to give us a call at 864-907-6004. You can also email us at Tech@ddmworks.com.