

SLINGSHOT USA FLAG MOUNT

Please log on to www.youtube.com and search for TricLED.com. Select our TricLED.com channel to view installation of this and other products.

Contents of your package

- USA Flag LED
- alcohol pads
- Primer adhesive stick
- (2) T-Taps and 2 male spades

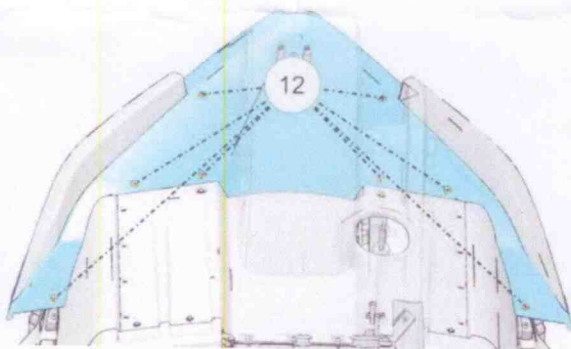
What you will need:

- Drill, drill bit, 1/4" plastic loom, zip ties, 8" of wire 22-26Ga, wire stripper and crimper.

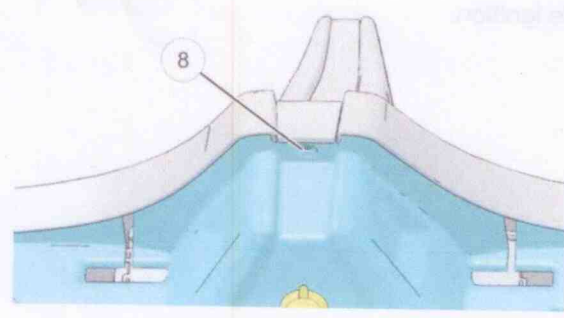


The USA flag is iconic piece and has been proudly flying on the back of many motorcycles for years. Truly a unique piece and one that you will proudly show. It is one of a kind and true to its design with 50 blue stars and 13 stripes. Your USA flag can be mounted anywhere on a flat spot, and for this install it will mount on the rear panel in front of the rear tire.

1. Disconnect the wire connector for the license plate light then remove the fastener on diagram (11) on the license plate mount.

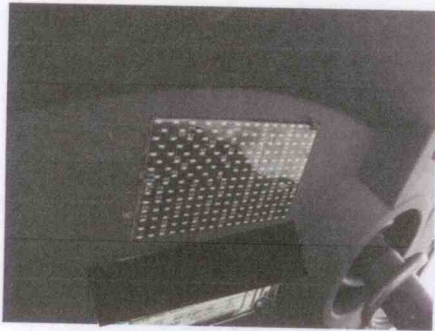


2. Remove the fasteners holding the rear panel to the vehicle with a Torx-30. (8) bolts total. See diagram 12.



3. Remove the fastener (8) under the center trim piece on the back of the rear body panel.

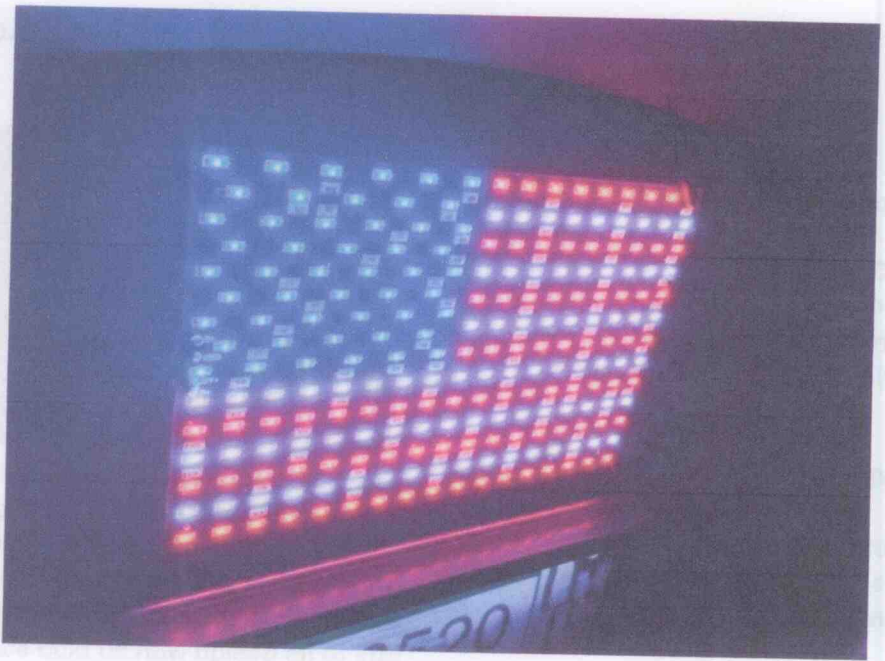
SLINGSHOT USA FLAG MOUNT



Locate the spot to mount the flag then thoroughly clean the surface with alcohol pad. Use a ruler to measure side to side and to make sure it's level. It's helpful to use a sharpie marker and mark the corners. Use the supplied primer and etch the section where you will install the flag. Insert wires through pre-drilled hole. Route wires up and towards the license plate wire. Using a 9V household battery, test the flag before installation. Note positive wire and negative wire.

Crimp the Male spade to the flag and crimp the T-Tap to the license plate running light. See video online for more info.

Your flag will be on automatically when the key is turned to the ignition.



THANK YOU FOR YOUR PATRONAGE. IF YOU HAVE ANY QUESTIONS PLEASE CONTACT US AT 94-328-9507 OR AT SALES@TRICLED.COM