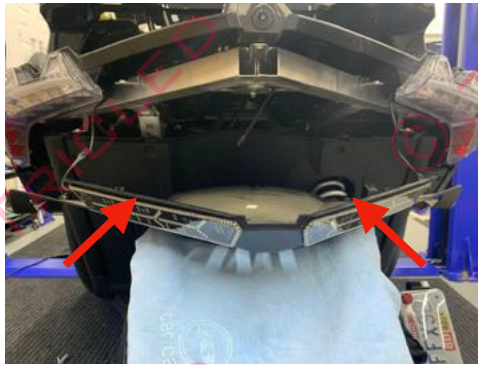


# POLARIS SLINGSHOT AFTERBURNERZ 2015+



## Contents

- (2) Custom LED module
- (2) OEM plug N play harness
- (2) 24" extension primer and alcohol wipes



Remove the license plate bracket and Torx 40 bolts that hold the lower plastic cover



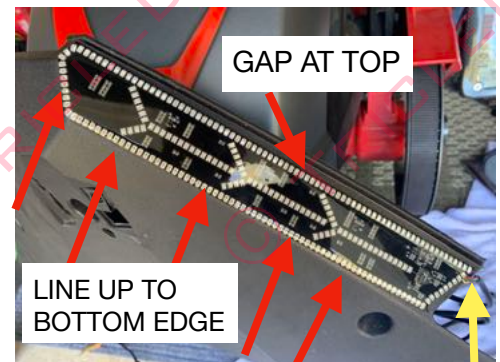
Remove the OEM harness from the left and right tail lights and connect the provided OEM harness inline and reconnect



Connect the 24" extension to the harness, the other end will connect to the LED light later



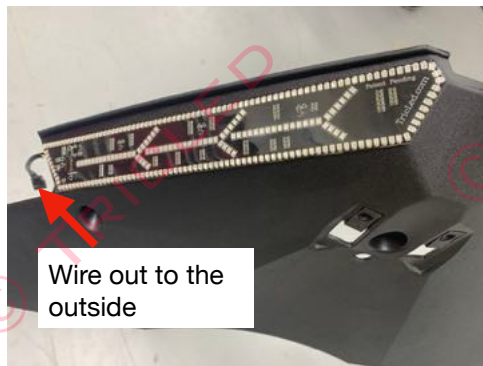
Clean the surface with alcohol thoroughly and let dry then apply primer.



Position the new LED module on the surface, do not adhere yet!

Note the yellow arrow, place a slight notch on the plastic to allow wire to go through without being pinched against the twilight and plastic.

**ADHERE THE LED TO THE PLASTIC PANEL.**  
**IT IS IMPORTANT TO FOLLOW THE BOTTOM LOWER EDGE LINE AND NOT THE TOP OR YOU WILL NOT BE ABLE TO RE-INSTALL THE LOWER PANEL.**  
**IMPROPER INSTALLATION IS NOT COVERED UNDER WARRANTY, NO EXCEPTIONS!!!**



Notice the the arrows point out to the outside, wire faces out to the outside of the SS.



Both lights installed and ready to put back



Connect each LED to the 24" extension on each side

Test the LED for functionality, Run, Brake and Turn signal

Zip tie all loose wiring



Reinstall the lower black panel and be sure to run the wire on the notched plastic so it does not get pinched against the panel and tail light



Test the LED one more time prior to putting all the bolts back on

