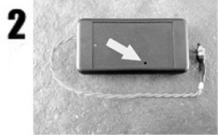


Programming Instructions

SMART/LEARN BUTTON

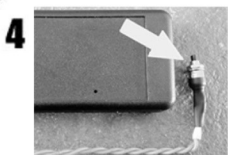
1 See Chart A to determine # of times to press button and write in blank on step 5.



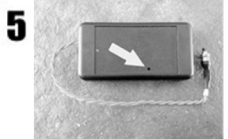
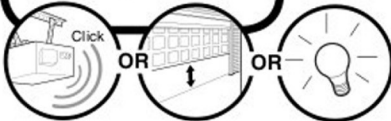
Press program button until LED lights.



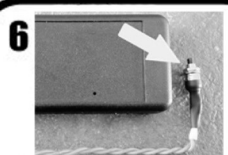
Press and release the smart/learn button.



Select a button to program. Press button ___ times ensuring LED stops flashing after each press. Code is accepted when one of the following occurs:



Press program button.



Programming complete. Press selected button to test. If unit does not work, return to Step 3.

CHART A

# of times to press button	Brand	Type/Color of Smart/Learn	Year	
1	Linear®	Mega-Code	'97-Current	
2	Chamberlain®*	Orange	'97-'05	
3	Chamberlain®*	Purple	'05-Current	
4	Chamberlain®*	Green	'93-'96	
5	Genie®	Overhead Door®	Intellicode	'95-Current
6	Genie®	Overhead Door®	Intellicode	'05-Current
7	Stanley®	Secure Code	'98	
8	Chamberlain®*	Yellow	'05-Current	
9	Wayne Dalton®	Rolling Code	'99	
11	Chamberlain®*	9 Position	'90-'92	

CHART B

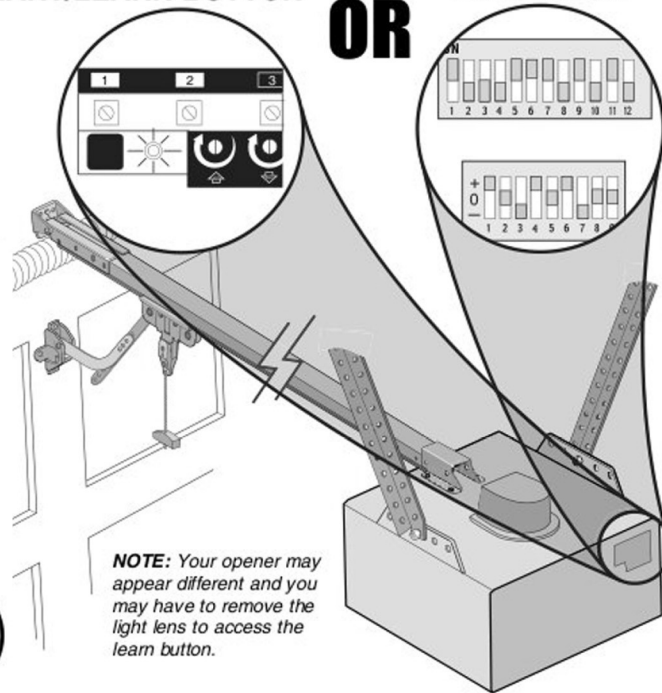
# of times to press button	Brand	Description	Year
11	Chamberlain®*	9 Position	'90-'92
12	Chamberlain®*	9 Position	
13	Genie®	Canada	'83-'89
14	Linear Multicode®	12 Position	'85
15	Chamberlain®	10 Position	'76
16	Stanley/Multicode®	8 Position	'83-'89
17	Genie®	10 Position	'76
18	Linear®	9 Position	'85
19	Moore-O-Matic®	8 Position	'76
	Chamberlain®*	7 Position	'83-'89

***NOTE:** LiftMaster, Do-It, Master Mechanic, Raynor, True Value and Sears Craftsman are compatible with Chamberlain technology.

SMART/LEARN BUTTON

DIP SWITCH

OR



NOTE: Your opener may appear different and you may have to remove the light lens to access the learn button.

NOTE:

2 Position DIP Switch:
If programming fails reverse DIP switches (OFF to ON and ON to OFF).



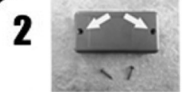
***3 Position DIP Switch:**

For Chamberlain remotes DO NOT use the "0" position, use "+" or "-". If you already have a 3-button remote, DIP switch #1 must be set to "-" if the large button is to open the door. It may be necessary to reprogram original remote controls.

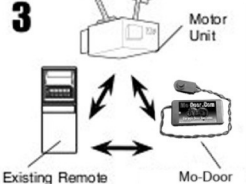


DIP SWITCH

1 See Chart B to determine # of times to press button and write in blank on step 5.



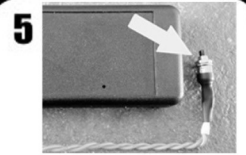
Using a small phillips head screwdriver unscrew the two screws located on the back of your Mo-Door



Match DIP switches. Turn extra switches OFF.**



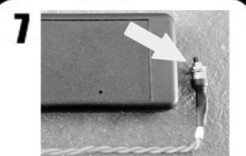
Press program button until LED lights.



Select a button to program. Press button ___ times ensuring LED stops flashing after each press. Code is accepted when door activates.



Press program button.



Programming complete. Press selected button to test. If unit does not work, return to Step 3.

+Once done programming replace back panel and screws.

Mo-Door
Garage Door Systems



Info@Mo-Door.com

