



Lower Front Grill Insert For the CAN-AM SPYDER 2020+ R/T Installation Instructions
(Installation Instructions are for the SPYDER R/T with and without OEM Center Mounted
Wide Visibility Auxiliary LED light)

****Please read thoroughly before proceeding with installation in order to ensure proper fit & functionality****

KIT LIST:

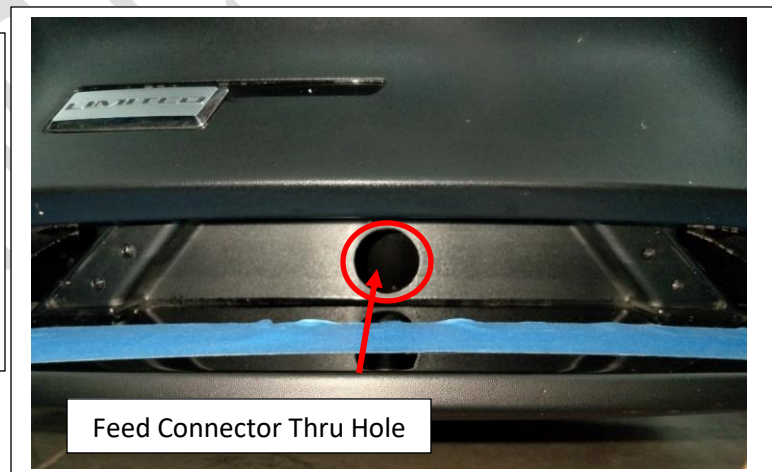
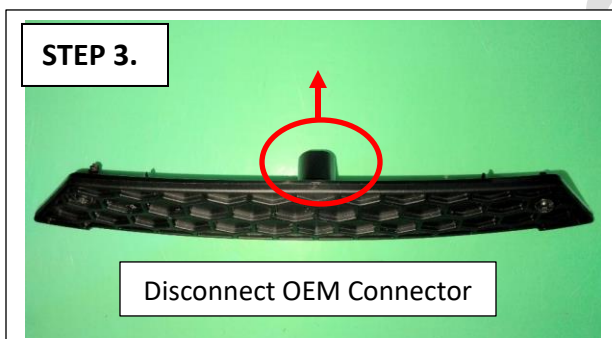
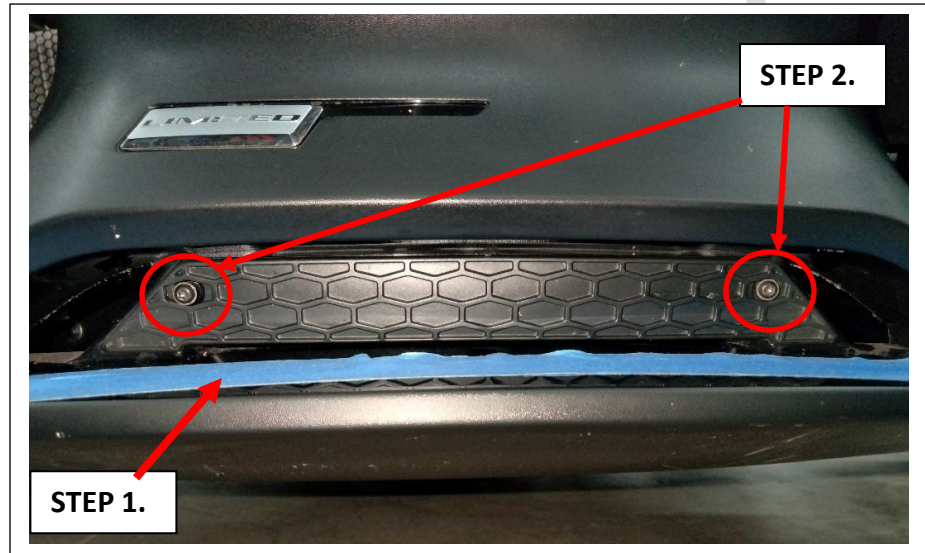
(1) center grill insert

HARDWARE

- (2) Screws
- (2) Spacers

TOOLS NEEDED:

- T15 torx screwdriver
- Phillips screwdriver
- Painters tape

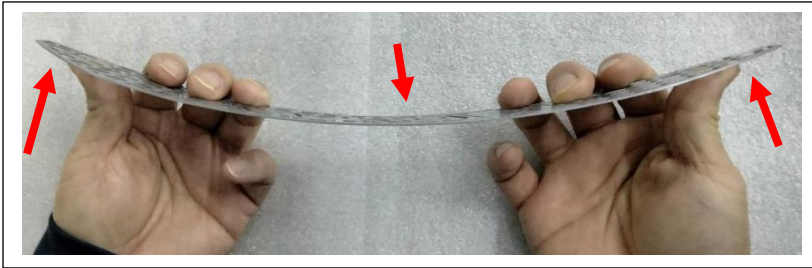


Before beginning the installation, ensure that the front of the fairing is clean and free of all dirt and oil.

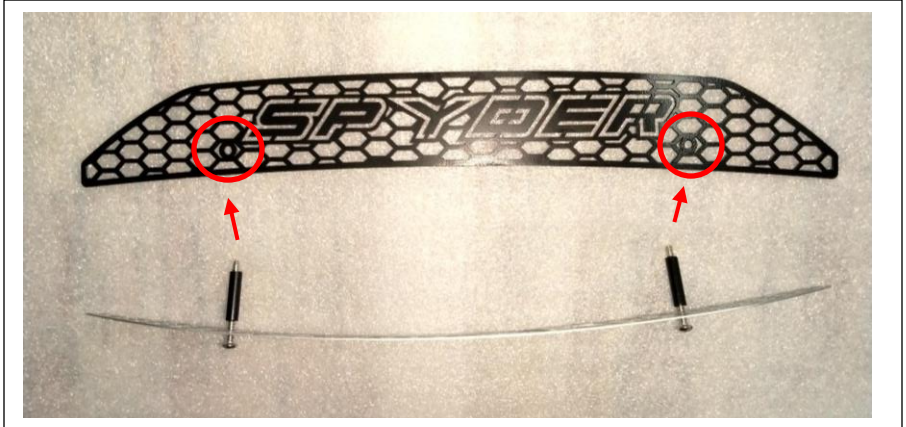
Use painter's tape to cover the area depicted in **STEP 1**. picture to prevent any scratches to the surface.

STEP 2. use a T15 torx screwdriver to remove the 2 OEM screws and the plastic cover.

STEP 3. An OEM connector should be connected to the back of the plastic cover. Remove the connector from the OEM plastic cover and feed it into the center hole to secure it out of the way of your new center grill.



STEP 4.



STEP 4. Before installing your new center grill insert, slightly flex the grill insert carefully so that it fits the contour of the mounting location.

2 screws are provided with your kit. Insert one screw into each mounting hole of the grill insert then feed one spacer into each screw.

Line up each screw into the OEM pre-drilled hole and tighten each screw slowly until the grill insert is properly seated. ***be careful not to overtighten the screws. Overtightening the screws may strip the mounting holes***

If the outer edges do not fit the contour of your Spyder, disassemble, flex and bend the ends slowly and re-install.

Once center grill insert is installed properly, remove blue painter's tape.

CONGRATULATIONS YOUR INSTALL IS COMPLETE!

