

# HIVIZ MIRROR DRL AND SEQUENTIAL TURN SIGNAL

TricLED HiViz Mirror DRL is compatible with: F3T / F3L 2016+ (built-in turn signal), 2019+ model (blank cover on the mirrors), and 2020+ RT/RT-L models.



Pair of stick on DRL. (No Drilling)

- (2) alcohol pads
- (2) primer wipes
- (1) Harness



2019+ custom plug and play harness. Requires power fender harness.

**We recommend the use of a second set of power fender harness and run this junction under top headlights**

**\*If not using additional power fender harness the supplied extension will also reach to the original power fender harness down by the A Arms**



2016-2018 F3T / F3L models

Plug and play harness connects to OEM harness under front suspension arms and mirror OEM connector



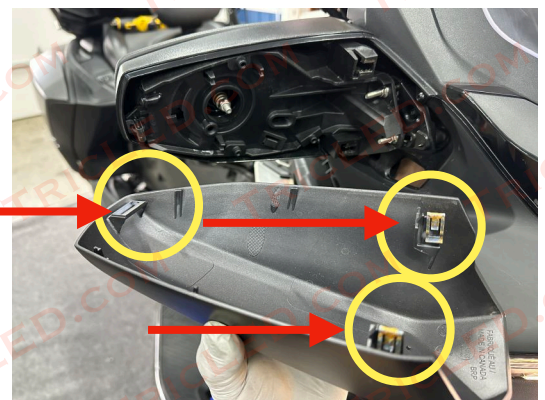
Mirror cover removal is identical from 2016-2018 with built in turn signals or

2019+ models with no turn signal.



Use a trim pry tool to separate the cover from the mirror housing, do this along the top and bottom of the mirror

Note the 3 mirror clips behind the cover, this is where you will want to pry to release the clip



# HIVIZ MIRROR DRL AND SEQUENTIAL TURN SIGNAL

Installation for 2016-2018 F3T / F3L with mirror turn signal is as follows. Please refer to your owners manual on how to open the following body panels.



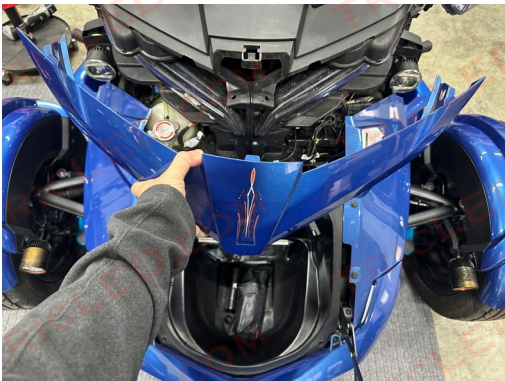
Remove top service panel cover from both sides



Remove side panel



Open front trunk and remove service cover



Loosen the front center bolt and nut in between the headlights and remove front headlight clip



Remove top dash panel clip and exposed as shown in next step



Top side dash panel removed



From underneath the mirror housing disconnect the factory OEM connector

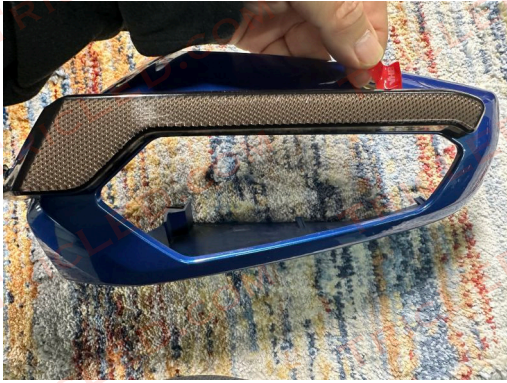


Install the supplied OEM harness. Connect the OEM harness that has a single red wire to the mirror

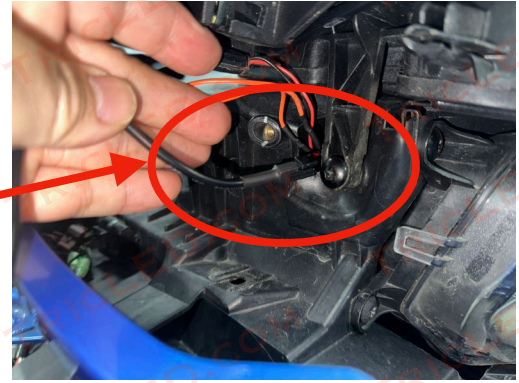


Position the new LED to the mirror cover. Note the cutout of the mirror is shaped to go around the bottom of the LED. Clean surface with alcohol.

# HIVIZ MIRROR DRL AND SEQUENTIAL TURN SIGNAL



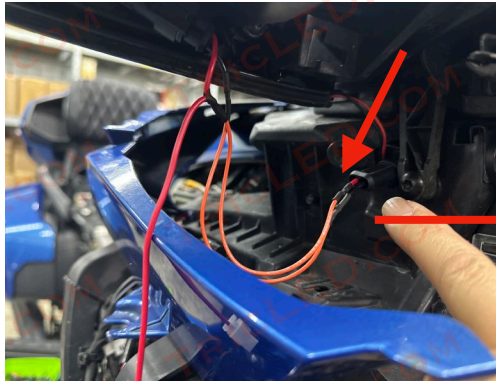
Once surface is clean & dry reposition the LED and starting from the outside peel back small sections at a time and adhere.



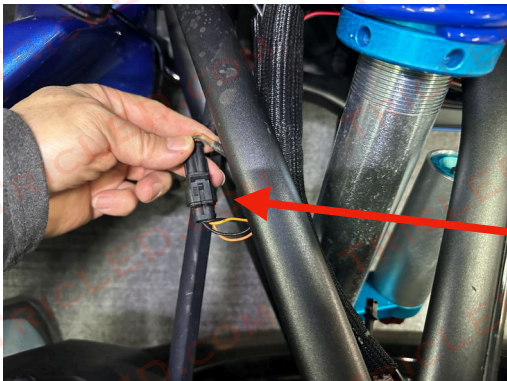
Disconnect the extension from opposite side of OEM harness and feed wire through the hole on the side of the Spyder and bring the extension down towards the A Arm.



Connect the mirror cover wire connection to the 1:2 white splitter



Now feed the other end of the 2 pin oem harness connected to the mirror through the same hole opening. There will be no connectors present behind the mirror cover except the original mirror turn signal connection. All connection points will be hidden behind the body panel



Connect the mirror cover wire connection to the 1:2 white splitter

## Installation for HiViz Mirror LED for RT 2020+



Pair of stick on DRL. (No Drilling)



2019+ custom plug and play harness. Requires power fender harness. We recommend the use a second set of power fender harness and run this junction under top headlights, this will keep wiring neat and organize instead of bundling them down by the A arms.

\*If not using additional power fender harness the supplied extension will also reach to the original power fender harness down by the A Arms



Remove mirror cover



Test fit the led light fitment, you can use a blue tape as a guide prior to installation.

Clean the surface, apply primer and apply the LED



Note the hole cavity right under the mirror, you will slide in the wire through here.



Attach the extension wire to the mirror.



Slide the wire through the opening and down towards the front of the headlight



Re-attach the mirror cover



If you are running a secondary power fender harness junction under the headlight then make your connections here.

If your using the original power fender harness then run your wires down to the A arm and connect to the lower power fender harness