

INSTALLATION INSTRUCTIONS

HeliBars® Handlebar Replacement
Can AM Ryker
P/N: HB08170

***IMPORTANT:
PLEASE GIVE CUSTOMER ENCLOSED INFORMATION!***

HELI BARS



Thank you for your purchase of our HeliBars®. They are designed to increase your long distance comfort and improve the handling of your sport motorcycle, and we feel confident you will enjoy them.

Your HeliBars are designed to fit your motorcycle with little to no modifications needed to your stock cables and hydraulic lines. In order to achieve this fit, we do not simply increase the height at the fork tube/triple clamp area.

HeliBars INSTALLATION

**IMPROPER INSTALLATION COULD RESULT IN SERIOUS INJURY OR DEATH.
HAVE A QUALIFIED MECHANIC INSTALL YOUR HeliBars.**

****NOTE THE LOCATION OF LINES AND CABLES.**

!! CAUTION !! MAKE SURE THE HeliBars are fully seated. MOVE BARS LOCK TO LOCK AND CHECK CLEARANCE OF: 1.CABLES 2. HYDRAULIC LINES 3.WIRES 4.FAIRING 5.FUEL TANK. TORQUE ALL HARDWARE TO MANUFACTURER'S SPECIFICATIONS.

IF YOU HAVE INSTALLATION QUESTIONS, PLEASE CALL 1-800-859-4642.

HELI MODIFIED, INC. ASSUMES NO LIABILITY FOR ANY INJURY OR LOSS OF PROPERTY WHICH MAY RESULT FROM IMPROPER INSTALLATION OR USE OF ANY HeliBars.



WARRANTY / RETURN POLICY

Thank you for your order. We make every effort to build a quality product so you can fully enjoy your riding experience.

HeliBars® may be returned for defects in materials and workmanship within one year from the date of shipment to the original purchaser, in which event the purchaser may receive a replacement set of HeliBars.

If within thirty (30) days you are not satisfied for any reason, you can return the HeliBars® product to us. 100% refund (product purchase price only) will be extended on any new, unused and unaltered item in original packaging. *** There is a 10% restocking fee on products returned after installation. ***

Conditions of Return Policy:

- . A Return Authorization Number must be obtained from us before you return the product.
- . Return policy is valid for original purchaser only. If HeliBars are purchased from a vendor other than Heli Modified, Inc., customer must contact vendor where purchased regarding returns.
- . Refund will be extended to original purchaser only, and for product purchase price only.
- . Bars must not be used as a tie down point. (See attached 'Trailer Instructions').
- . Bars cannot be damaged, dented, or altered in any way.
- . Bars cannot be overtorqued.
- . Product must be returned with all original equipment, documents and in original packaging. There must be no physical damage caused by the customer or by carrier.
- . Credit will be issued to original payment method upon receipt of product and inspection.

We reserve the right to charge a re-stocking fee of up to 25% if the above criteria are not met.

THERE ARE NO FURTHER EXPRESS OR IMPLIED WARRANTIES INCLUDING, BUT NOT LIMITED TO, IMPLIED WARRANTIES OF MERCHANTABILITY OR FITNESS FOR A PARTICULAR PURPOSE. By accepting this product, the consumer agrees to arbitrate and litigate any controversy in the State of Maine, and under the laws of the State of Maine.

HELI MODIFIED INC. ASSUMES NO LIABILITY FOR ANY INJURY OR LOSS OF PROPERTY WHICH RESULT FROM IMPROPER INSTALLATION OR USE OF ANY HELI BARS. ALL HELI MODIFIED, INC. PRODUCTS SHOULD BE INSTALLED BY A QUALIFIED MECHANIC. IMPROPER INSTALLATION MAY CAUSE DEATH OR INJURY.





**HeliBars Handlebar
Can AM Ryker
Installation Instructions**

75 (mm), 3" Closer to rider

IMPROPER INSTALLATION COULD RESULT IN SERIOUS INJURY OR DEATH. HAVE A QUALIFIED MECHANIC INSTALL YOUR HELIBARS.

For questions regarding installation please call 1-800-859-4642

HELI MODIFIED, INC ASSUMES NO LIABILITY FOR ANY INJURY OR LOSS OF PROPERTY WHICH MAY RESULT FROM IMPROPER INSTALLATION OR USE OF ANY HELIBARS.

Installaton Overview:

Cover the fuel tank with a protective cover.

Required Tools:

- * torx screwdriver
- * 3mm hex wrench
- * tape measure

1.) Remove the bar end mirrors.

(a) Loosen and turn mounting screws out about 3/4 of an inch. Tap the screws in with a plastic or a brass hammer to loosen tension on mount. (b) Rotate mirror slightly foward and back as you pull them out. (See **Photo #1**)

2.) Remove hand guards.

(a) Using a 3mm hex wrench loosen and remove screws and caps holding hand guards in place. (See **Photos # 2 & 3**) (b) Let handguard rest below handlebar. (See **Photo #4**)

3.) Remove control housings. (a) Using a torx screw driver remove screws from

housing. (See **Photo # 5**). (b) Spread the two halves and let the housing rest on covered tank. (See **Photo # 6**) (c) On the throttle side spread the two halves apart and slide the throttle sleeve off the bar tube. (See **Photo # 7**). (d) Open the plastic stays and release the wire looms. (See **Photo # 8**).

4.) Remove stock handlebars.

(a) Loosen and remove the four screws and two caps. Set bar aside. (See **Photo # 9**)

5.) Install HeliBar.

(a) Install throttle forward half onto the right side of the HeliBar. The only rearward facing hole is on the right side. Install four mounting screws and caps. Use a small amount of blue loctite provided on the threads of all four screws. (See **Photo # 10**).

(b) Using a tape measure up against the lower half of the handlebar clamp adjust bar left or right until it measures 14 and 3/8 inches. (See **Photos 11 & 12**). This will center bars perfectly. Snug screws only at this time. (c) Slide throttle grip into throttle housing and you will hear/feel a tiny click. (See **photo # 13**) Put the two halves of the throttle housing together. Make sure the larger two wire looms are inside the rubber grommet and that it's in the correct groove on the housing halves. (See **Photo # 14**)

Locate the pin (dowel) in the rear housing half into the locating hole, install three screws and tighten. Go easy, you're tightening into plastic. (See **Photo # 15**) (d) Position the handguard locating pin into the locating hole. (See **Photo # 16**) Install caps and screws. Apply a small amount of blue loctite provided. (See **Photo # 17**) (e) Carefully assemble two halves of the left control housing, engage locating pin into locating hole and install, then tighten both screws. Make sure rubber grommet is assembled correctly and wire looms are in place. (See **Photo # 18**) (f) Remove left grip with compressed air or a spade screwdriver slid in between the grip and the bar tube, drip some rubbing alcohol into the crack and work the screwdriver deeper. Twist grip and remove. Using rubbing alcohol as a lubricant, slide the grip onto the HeliBar as shown in **Photo # 19**. (g) Install left hand guard as per the right side. (h) Install, adjust, and then tighten mounting screw on the left and right rear view mirrors. (See **Photo # 20**) (i) Install wire looms into plastic clamps provided. Make sure the clamp tabs are facing forward. (See **Photo # 21**)

!! CAUTION!! BARS MUST BE TORQUED TO SPECIFIED VALUES. THEY MUST NOT BE OVERTORQUED. OVERTIGHTENED HARDWARE CAN LOSE INTEGRITY.





Photo # 2



Photo # 4



Photo # 1



Photo # 3





Photo # 6



Photo # 8

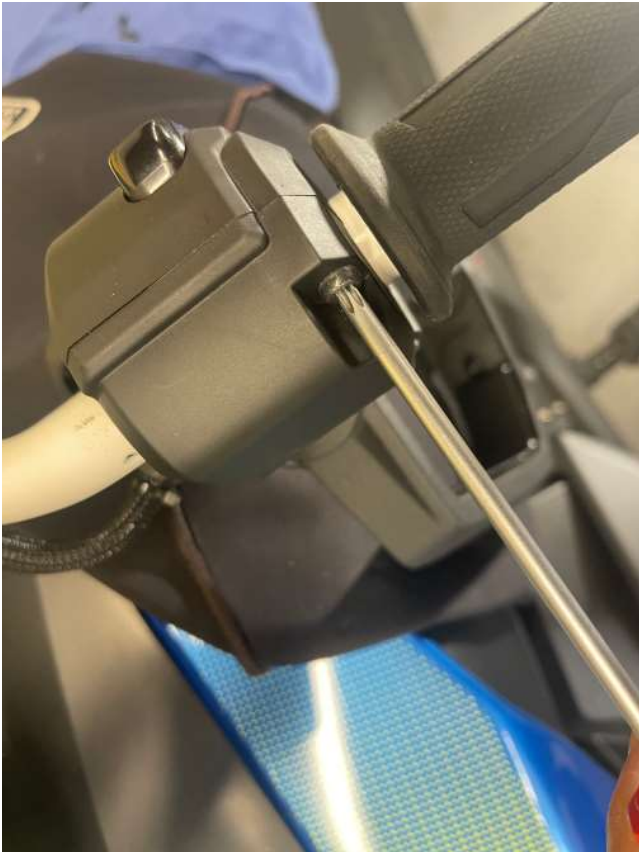


Photo # 5

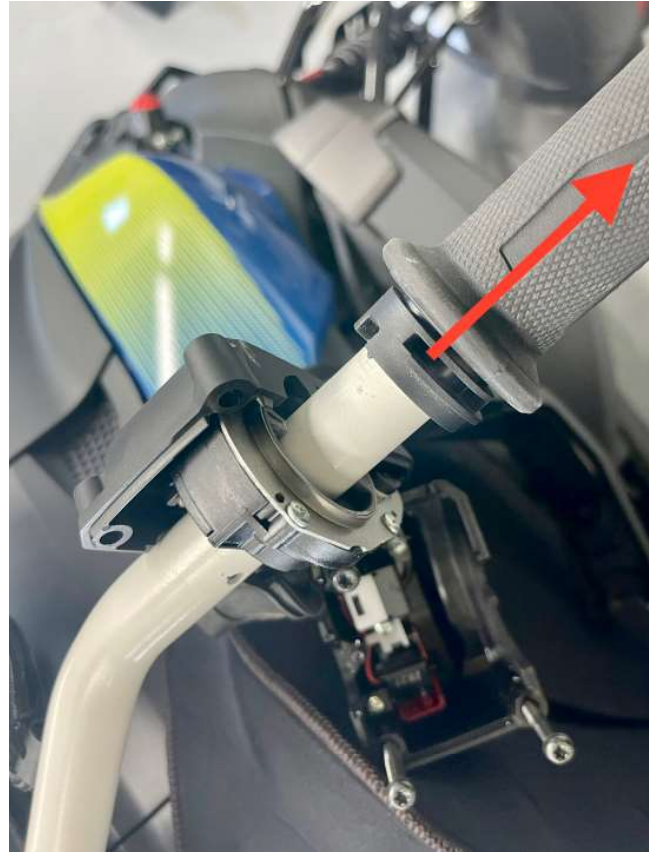


Photo # 7





Photo # 10

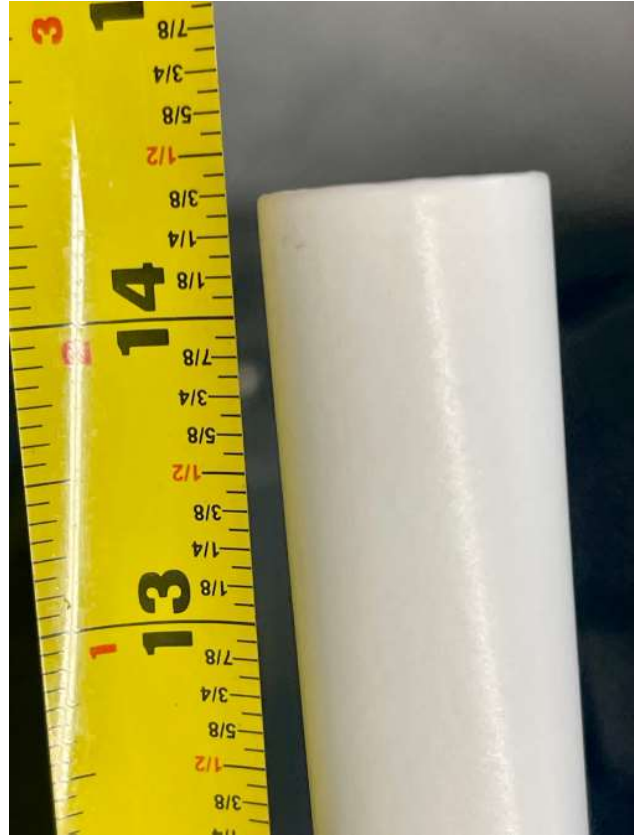


Photo # 12



Photo # 9

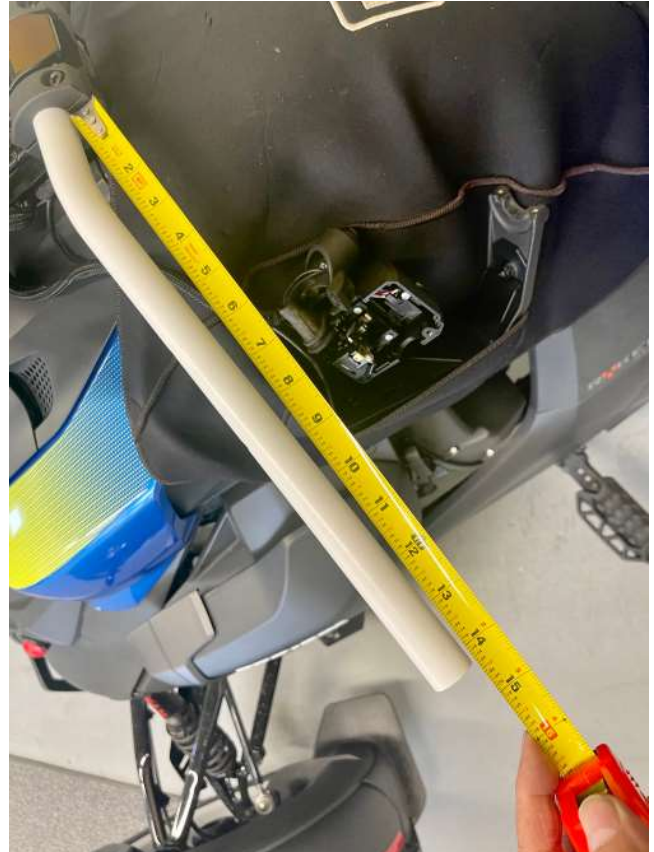


Photo # 11





Photo # 14



Photo # 16



Photo # 13



Photo # 15





Photo # 18



Photo # 20



Photo # 17



Photo # 19



IMPORTANT INFORMATION ABOUT POWDER COATED HELIBARS

HeliBars® are finished with a polyester powder coating. The polyester is recommended for outdoor use because of its excellent UV resistant quality; if we were to use an epoxy it would tend to fade and chalk pretty quickly when exposed to sunlight and UV rays.

Care must be taken during installation because the finish can be scratched by the sharp surfaces of the controls and master cylinder clamps. When mounting the master cylinders to bars, do not let them move around the bars with the caps loose. Mount them in the proper position and hand tighten the screws until final adjustments are made; in this way you will lessen the possibility of scratching.

NOTE: Powder coat finish is not indestructible, there are chemicals which may react negatively when applied to finish. Brake fluid may cause deterioration of the finish. We do not recommend the use of acetone or similar chemicals for cleaning purposes. We would recommend the use of an over-the-counter adhesive remover (such as Goo Gone) for the removal of any extraneous material. Please read labels directions for any cleaning/polishing product before use. If you have any questions regarding the use of any over-counter-products with the HeliBars, please call us before applying them to the powder coated finish.

If care is taken during installation, your HeliBars will continue to look as good as when they were new. They will look great for years to come with a bit of wax and careful cleaning. Thank you for your purchase, ride safe and enjoy!

Sincerely,

Harry Eddy, President



Trailing with HeliBars®

HeliBars clip ons and handlebars must not be used as the primary holding points for tie downs while trailering. *As with your stock bars* applying extreme force to the ends of the bars can bend the bars or rotate them on their mounts.

Use a wheel chock and pull the machine down and forward using soft ties or similar, attached to the lower triple clamp.

Bars should only be used as secondary attachment points to steady the motorcycle from lateral sway.

Failure to follow these guidelines can cause damage to the bars and the motorcycle, and may also void our warranty.

