



Brake Master Cylinder Support for Polaris Slingshot DDM-15-26



This Brake Master Cylinder Support for the Slingshot improves brake pedal feel by eliminating master cylinder movement when the pedal is depressed.

Installation time of the support depends on you and your mechanical skills. It is suggested that you read through the directions a few times to familiarize yourself with the procedure.

If you are pretty handy with tools the support can be installed in 25 minutes or less.

If you have any questions during the installation you can call us at (864) 907-6004 or email us at Tech@ddmworks.com.

TOOLS NEEDED	QTY	PART DESCRIPTION
T40 Torques bit	1	Main Brace Bracket
13mm, 10mm, and 9/32 Sockets	1	Stainless Steel Threaded Adjusting Rod
10mm, and 8mm Wrenches	1	Master cylinder Cup (assembled)
<ol style="list-style-type: none"> 1. Disconnect the negative terminal from the battery. 2. Make sure that the car engine is cool to the touch and you are in a well ventilated area away from open flames. 	1	M4x10 hex bolt (assembled on bracket)
	1	M8 x 25mm Hex Head Bolt
	1	M8 Washer
	1	M6 x 45 Hex Head Bolt
	2	M6 Large Diameter Flat Washer
	1	M6 Nut



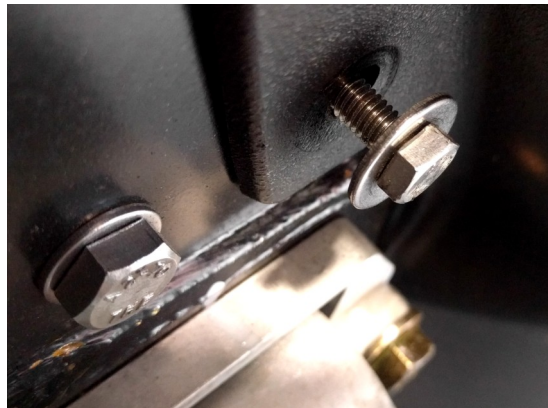
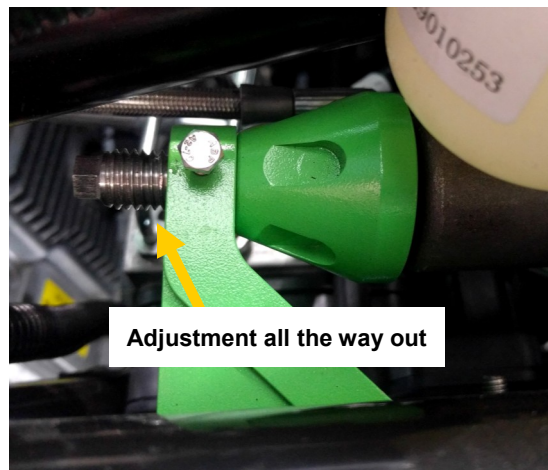
Piedmont, SC 29673

Tech Support



Installing the Brake Master Cylinder Support

1. Make sure your Slingshot is in neutral and the parking brake is on before starting installation.
2. Open the hood of your slingshot and locate the brake master cylinder on the drivers side of the vehicle.
3. In the fender of the slingshot you will see a Torques head bolt right above the upper control arm that holds the plastic to the frame. This bolt needs to be removed using a T40 torques bit. You will not be reusing this bolt.
4. Now you will take the Master Cylinder Support and hold it in place behind the Brake Master Cylinder. The adjustment screw should be all the way out at this point to make installation easier.
5. With the Support held in place by hand you can now insert the two new bolts and washers supplied with the kit. The M6 10mm head bolt goes in the same hole you just removed the T40 bolt from. And the M8 13mm head bolt goes just to the left of it in the pre existing hole.
6. Tighten both bolts down keeping the Support inline with your Master Cylinder. There is some room for adjustment in the Support.



Tech Support

(864) 907-6004 (call or text)

Email: Tech@DDMWorks.com

(864) 438-4949 9 (office)



Installing the Brake Master Cylinder Support , cont.

7. With both bolts tightened in place you now need to put the remaining M6 washer on the M6 bolt sticking through the New Support, followed by the M6 nut and tighten the nut down. You may need to hold the bolt head to make sure everything tightens down and the bolt doesn't back out.



8. With all the mounting hardware tightened it is now time to tighten the adjustment screw in towards the Master Cylinder. Using an 8mm wrench turn the adjustment screw in until the Support Cup is pressed firmly onto the Master Cylinder. Do not over tighten this adjustment screw. The cup just needs to make solid contact with the master cylinder.



9. With the adjustment screw set all that is left is to tighten the set screw on the adjuster so it can't come loose. Using a 9/32 socket tighten the set screw in locking the adjustment in place.



Tech Support
(864) 907-6004 (call or text)
Email: Tech@DDMWorks.com

(864) 438-4949 9 (office)



**Brake Master Cylinder Support for Polaris Slingshot
DDM-15-26**

Congratulations! You have finished the install. All of us here at DDMWorks thank you for your purchase and hope you enjoy your new Brake Master Cylinder Support.

If you have any questions feel free to give us a call or text us at 864-907-6004. You can also email us at Tech@ddmworks.com.

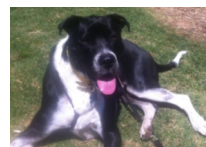


Tech Support

(864) 907-6004 (call or text)
Tech@DDMWorks.com

Sales

(864)438-4949
sales@ddmworks.com



This product is
Jake the
Supercharger
Dog

