



## DDMWorks Coolant Tank for the Polaris Slingshot



The DDMWorks Slingshot coolant tank is a direct replacement for the stock plastic tank. The aluminum coolant tank is much more sturdy and will not break like the stock tank, has a larger capacity than the stock tank and fits into the stock location. There is an integrated sight glass allowing the coolant level to be checked without removing the cap and also comes with a new pressure cap. While doing the coolant tank install we recommend upgrading to the silicone coolant lines also.



If you are pretty handy with tools the Coolant Tank can be installed in about an hour, however we suggest that you schedule at least a couple hours for the installation.

If you have any questions during the installation you can call or text (864) 907-6004 or email us at [Tech@ddmworks.com](mailto:Tech@ddmworks.com).

### Tools Needed for Install

- 13mm wrench
- Hose clamp pliers or channel locks
- Assorted screwdrivers
- A friends helping hands if available

**Make sure the Slingshot is cold and has not been ran for a few hours, or better, over night. You will be removing parts of the cooling system so things could be hot.**

**DDMWorks - 119A Hwy 183 Piedmont, SC 29673**  
Tech Support Call, Text or Email: (864) 907-6004, [Tech@DDMWorks.com](mailto:Tech@DDMWorks.com)

## Coolant Tank Install

If you have a 2015-2019 Polaris Slingshot with the GM 2.4L Ecotec engine, continue with these instructions. If you have a 2020 or newer Slingshot with the Polaris 2.0L engine, go to page 7 for your install.

### 2015-2019 Coolant tank installation

The coolant tank is made with threaded ports that allow for a couple different installations. This guide will outline the ways your new coolant tank can and should be installed



Before you begin the installation take a look at **page 5** of these instructions and decide how your lines will be ran. You can then install the correct fittings in your tank with it out of the slingshot before we begin.



## Stock 2015-2019 coolant tank removal

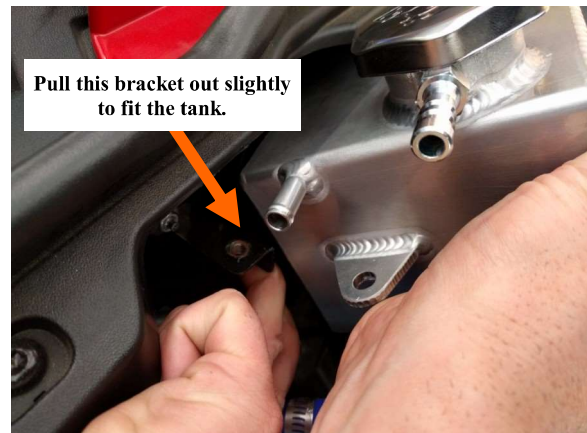
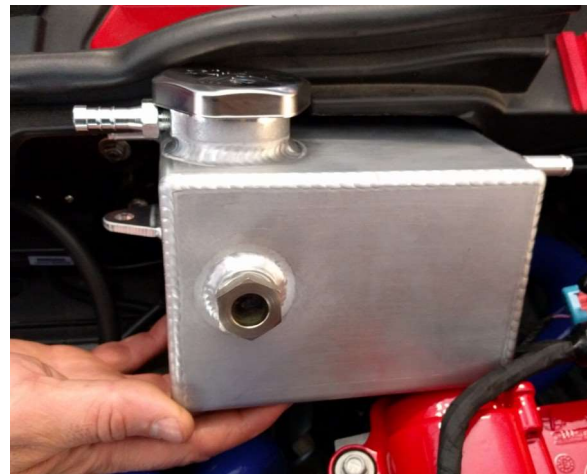
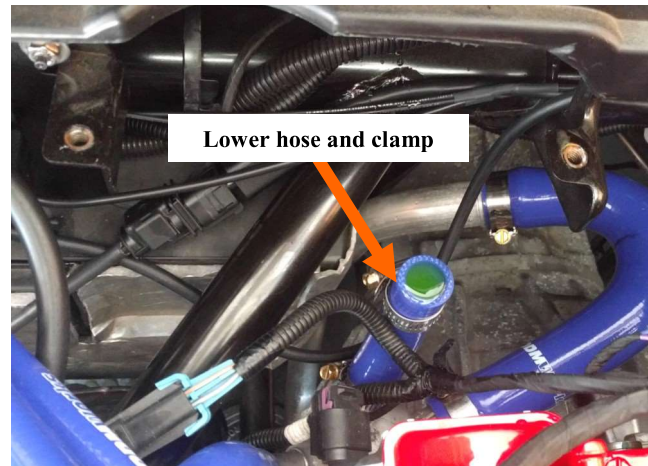
1. **Make sure the Slingshot is cold and has not been ran for a few hours, or better, over night. You will be removing parts of the cooling system so things could be hot.**
2. Start by removing the cap from your stock plastic tank. If you have any kind of suction device to remove the coolant in the tank use it now. Getting as much coolant out of the tank as you can will reduce the amount spilled in the coming steps. Place a catch pan under the slingshot at this time to catch what does spill out.
3. There are 2 bolts holding the tank in place, one on each side. Use a 13mm wrench to remove both bolts at this time.
4. With the bolts removed you can slide the tank out slightly to expose the hoses and their clamps. Depending on what hoses and clamps you have use the correct tool to loosen the clamps and remove the 2 hoses on the passenger side of the tank.



## 2015-2019 coolant tank installation

5. Next you will need to loosen the clamp under the coolant tank using the correct tool again depending on your slingshot.
6. You can now carefully remove the stock plastic tank from the slingshot. **You will spill some coolant at this time. Be sure to have some towels or rags handy. Also your catch pan in place under the slingshot.**
7. It is now time to install the new DDMWorks Aluminum Coolant Tank. With the rear of the tank angled down place it between the 2 bolt holes. Push it towards the drivers side of the slingshot. You will have to pull slightly outward on the passenger side mounting bracket of the slingshot.

**Do not worry about the bottom hose at this time. Once the tank is in place between the mounting brackets you can slide the lower hose onto the tank.**



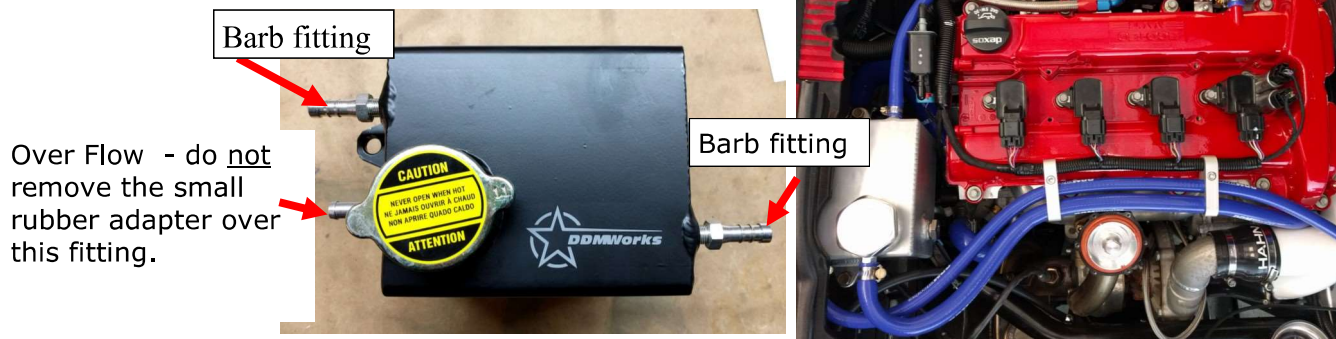
## 2015-2019 coolant tank installation

Before bolting the tank in place you will want to install the appropriate hoses for your application. Below you will find different ways to install the steam lines depending on your model year and coolant re route option.

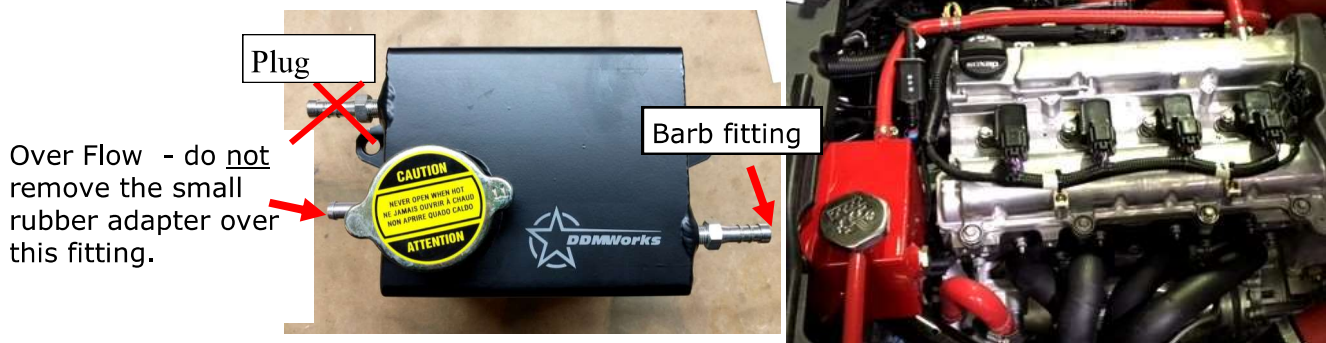
### 2015-2017 without coolant re-route. ( Stock Configuration )



### 2015-2016.5 With coolant Re Route.



### 2016.5 - 2017 With coolant Re Route



**If you have any questions during the installation you can call or text (864) 907-6004 or email us at [Tech@ddmworks.com](mailto:Tech@ddmworks.com).**



## Stock 2015-2019 coolant tank removal

8. With the coolant tank in place you can reattach the hoses starting with the steam lines and over flow tube. We are now using a smaller fitting with an adapter to mate up with the over flow tube. You can use the over flow tubes in this way or remove the adapter and make your own 5/16 short over flow tube.

With the hoses on and tightened down push the tank back into location and get the lower hose on the bottom of the tank and tighten it down.

9. Now that all the hoses have been reconnected you can replace the 2 bolts that hold the Tank down on the sides. Tighten the bolts down using your 13mm wrench.

10. Double check that everything is tight and in its place.

11. Fill the New Tank with coolant just above the level of the sight glass, put the cap back on the tank making sure it is tight and secure.

12. You are finished!

If you have a 2015-2019 Polaris Slingshot, your installation is complete. The following pages are for a 2020+ Polaris Slingshot.



**DO NOT TRY THIS AT HOME!**



## Coolant Tank Connections for 2020 Polaris Slingshot

The Coolant Tank is made with threaded ports that can be setup to use in a few different ways. For all 2020 Slingshot installs make sure your tank is setup as the picture is below -

Install a barb fitting in this hole for the factory steam line.

Over Flow - **DO NOT REMOVE** the small rubber adapter over this fitting. This piece is there to aid in fitment.

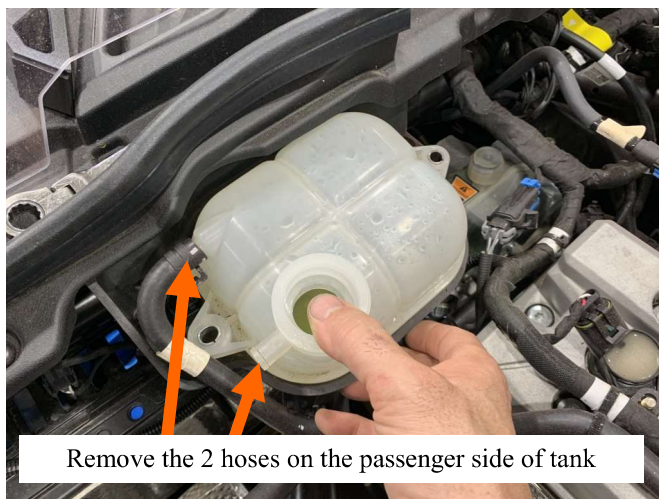


This hole should have the plug installed in it



## Removing the Stock Coolant Tank

1. **Make sure the Slingshot is cold and has not been ran for a few hours, or better, over night. You will be removing parts of the cooling system so things could be hot.**
2. Start by removing the cap from your stock plastic tank. If you have any kind of suction device to remove the coolant in the tank use it now. Getting as much coolant out of the tank as you can will reduce the amount spilled in the coming steps. Place a catch pan under the slingshot at this time to catch what does spill out.
3. There are 2 bolts holding the tank in place, one on each side. Use a 13mm wrench to remove both bolts at this time.
4. With the bolts removed you can slide the tank out slightly to expose the hoses and their clamps. Depending on what hoses and clamps you have use the correct tool to loosen the clamps and remove the 2 hoses on the passenger side of the tank.



## Removing the Stock Coolant Tank

5. Next you will need to loosen the clamp under the coolant tank / rubber housing. Use a pair of pliers or spring clamp tool to slide the clamp down the hose allowing the hose to come off the bottom of the tank.
6. You can now carefully remove the stock plastic tank from the slingshot. **You will spill some coolant at this time.**
7. **Be sure to have some towels or rags handy. Also your catch pan in place under the slingshot.**
8. With the tank removed, remove the rubber shield under it. There is a push pin on the drivers side of the rubber shield, remove that push pin and the rubber shield will come out.

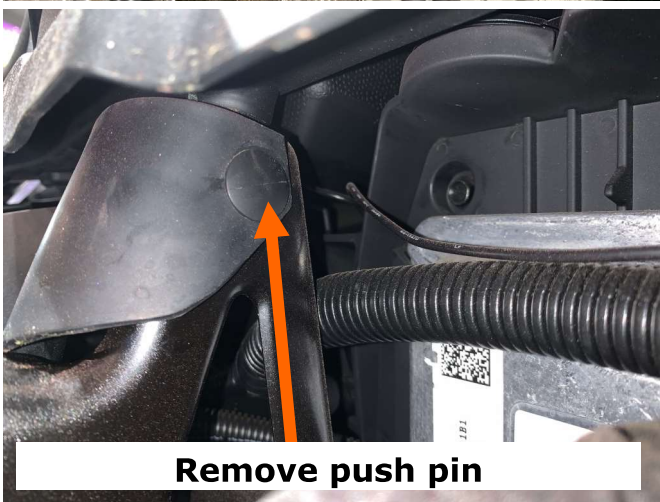
Now that the stock tank is out it is time to start installing the new tank.



**Lower hose and clamp**



**Tank removed**

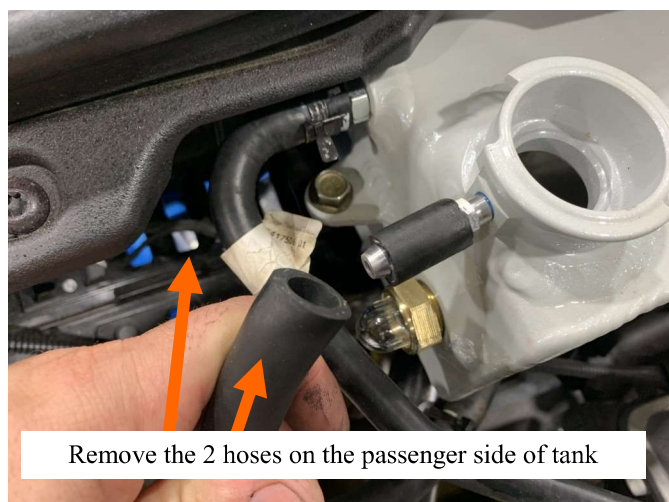
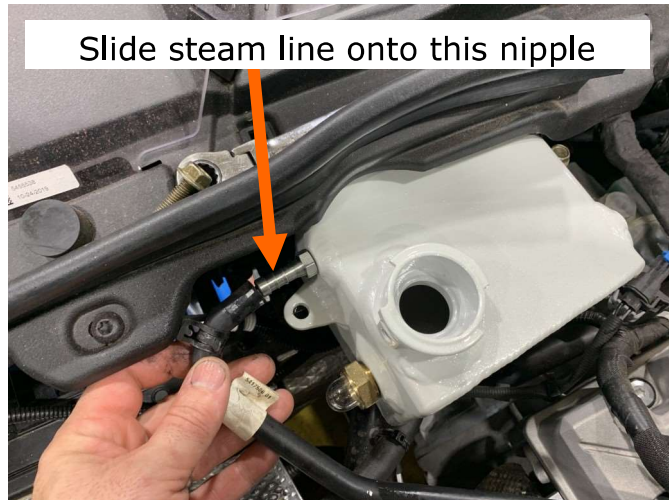
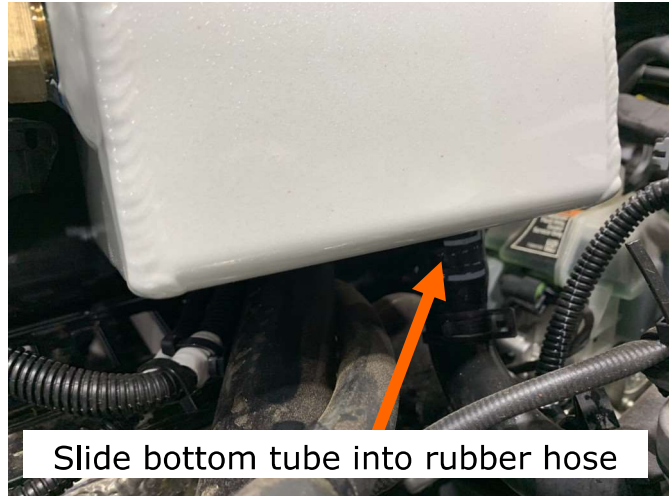


**Remove push pin**



## Installing the new DDMWorks Coolant Tank

1. First install the large tube on the bottom of the new tank into the coolant hose coming up from the engine. It helps if you spray a little WD-40 onto the large tube on the tank to help it slide into the rubber hose. Slightly twisting it back and forth also will help the tank slide all the way down into the hose.
2. With the bottom tube slid into the hose, now slide the steam line hose onto the nipple that was installed on the passenger side of the tank. A little WD-40 sprayed on the nipple will help the hose slide onto the nipple. Once the hose is pushed all the way up onto the nipple, use a pair of pliers to squeeze the clamp and slide it back up into place.
3. With the steam line installed, rotate the tank into place and install the 2—13mm head bolts you removed earlier from the stock tank.
4. Next, slide the larger overflow tube over the nipple that is right under the cap location. Make sure that the rubber hose that ships on the nipple is still in place. It adapts between the smaller nipple and the larger hose. A little spray of WD-40 will help this hose slide right on.



## Installing the new DDMWorks Coolant Tank

5. With the hoses installed, now squeeze the clamp on the hose under the tank and slide it up into place. All hoses should be tight at this point.
6. Fill the tank up until you see coolant in the sight glass, put the cap back on and you are done with the installation!
7. We do recommend checking the level in the coolant tank after a 15-20 mile drive, as sometimes the system will burb a little. Also it is a good idea to let the engine warm up and check for leaks before going on the first drive after swapping to the new tank.



## Congratulations on installing your new Coolant Tank !



119-A Hwy 183  
Piedmont, SC 29673  
**Tech Support**  
(864) 907-6004 (call or text)  
Email: Tech@DDMWorks.com



This product is  
Buddy the Turbo  
Dog  
Approved!

