

CAN-AM SPYDER Tie Down Rings Installation Instructions

****Please read thoroughly before proceeding with installation in order to ensure proper fit & functionality****

TOOLS NEEDED:

- (2) 15mm wrenches
- (1) screw driver

PARTS LIST:

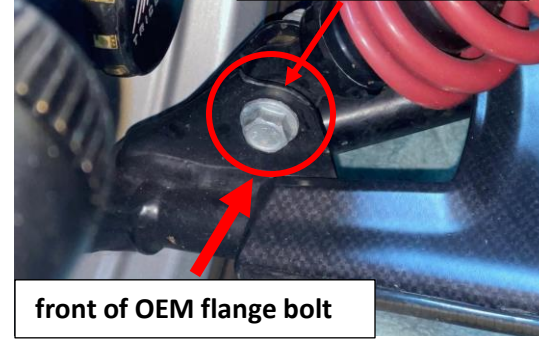
- (2) Flange Bolts
- (2) Lock Nuts
- (2) Toothed Washers
- (2) Powder-coated Rings

For **STEP 1** of this installation, you will be replacing the bottom bolt that holds the shocks in place with the new bolts provided.

To do so, you will need to lift the Spyder using a floor jack in order to relieve the tension on each front shock to be able to pull the OEM flange bolt out.

STEP: 1

use a 15mm wrench



STEP 2. Once you have lifted the Spyder, use your 15mm wrenches to hold the bolt in place from the front of the Spyder while removing the lock nut from the back.

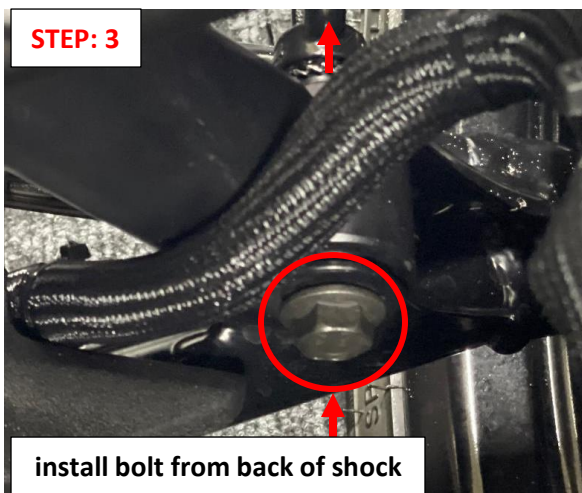
*Remove the OEM bolt and discard. You will use the new lock nut, bolt and washer provided in your kit.

STEP: 2

use a 15mm wrench



STEP: 3



For **STEP 3.** You will be installing the new bolt provided in your kit from the back of the shock instead of the front.

****Before inserting the bolt, lift the control arm so that the holes from the control arm mount and the shock line up to avoid any damage to the threads of the new bolt as it is being inserted.**

STEP 4. Once the bolt is installed, you will install the new lock nut, toothed lock washer and tie-down ring provided in your kit, in that order.

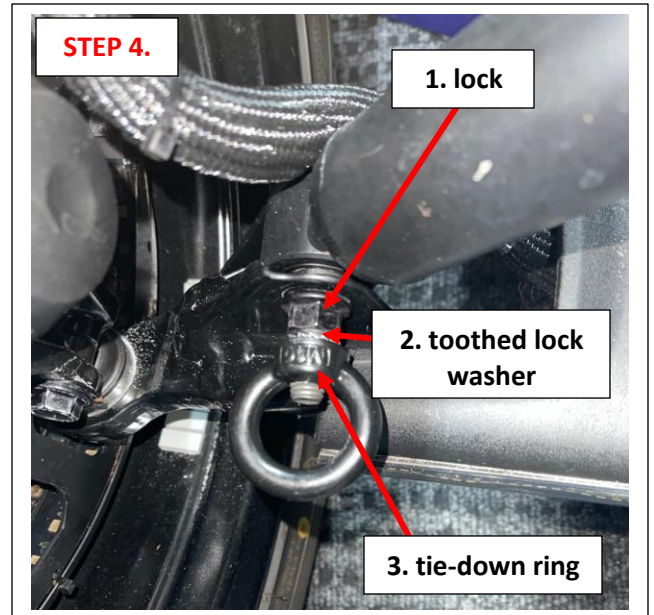
Use your 15mm wrenches to tighten the new lock nut and flange bolt down but do not torque to spec yet.

Next, add the lock washer on the bolt until it sits up against the new lock nut.

Then take one of your powder-coated tie down rings and thread it onto the end of your new bolt.

It is up to the rider what position you want to have your tie down ring will be oriented, VERTICAL OR HORIZONTAL!

Once you choose which position your tie down ring will be oriented, use a screwdriver to hold the tie down ring in that position while using your 15mm wrench on the flange bolt head to torque the bolt down to approximately 30ft/lbs.



Installation is complete! Periodically check your tie down rings prior to riding to ensure they have not loosened from vibration.

****Please read instructions thoroughly before proceeding with installation to ensure proper fit & functionality****



HYPNOTIC CONCEPTS LLC * info@hypnotic-concepts.com * 813-658-5774