

License Tag Mount with LED for the Can-Am SPYDER R/T (2020+) Installation Instructions

****Please read thoroughly before proceeding with installation in order to ensure proper fit & functionality****

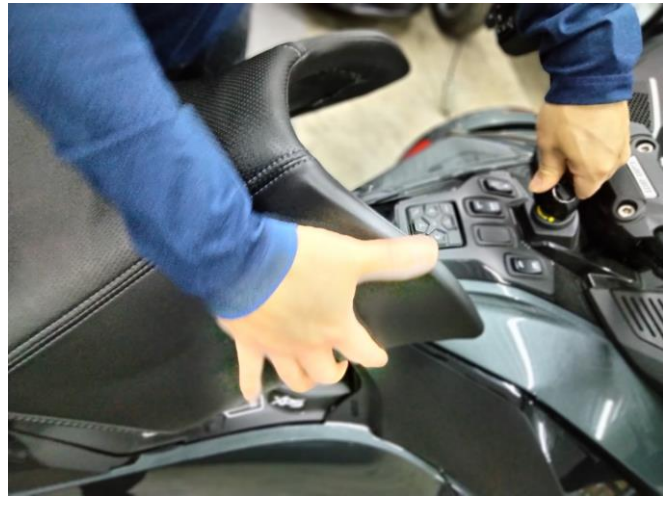
TOOLS NEEDED:

torx screwdriver set
pry tool
drill with 9/16" drill bit
Die-electric grease

PARTS LIST:

(1) mounting plate with LED
(1) 5 pin connector harness
(1) extension wire

STEP 1.



STEP 1. Remove the main seat by pushing the key into the ignition switch while turning the key counter-clockwise until the latch releases the seat.

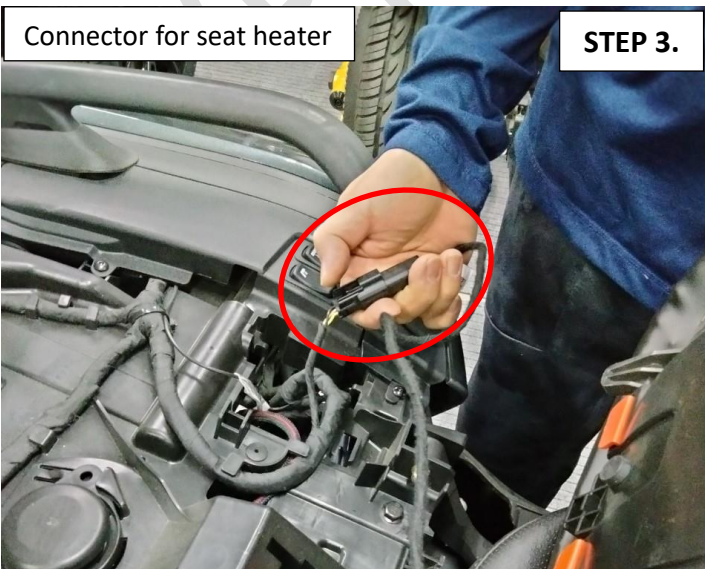
STEP 2.



STEP 2, Remove the passenger seat by pressing the 2 tabs holding the front of the seat down.

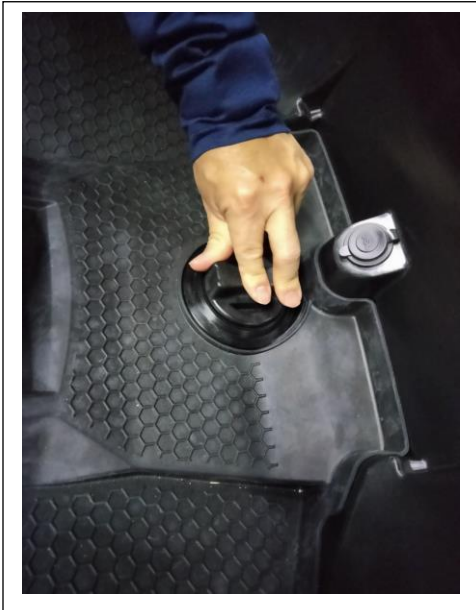
Connector for seat heater

STEP 3.



STEP 3. Before removing the passenger seat, you will need to remove the OEM seat heater connector.

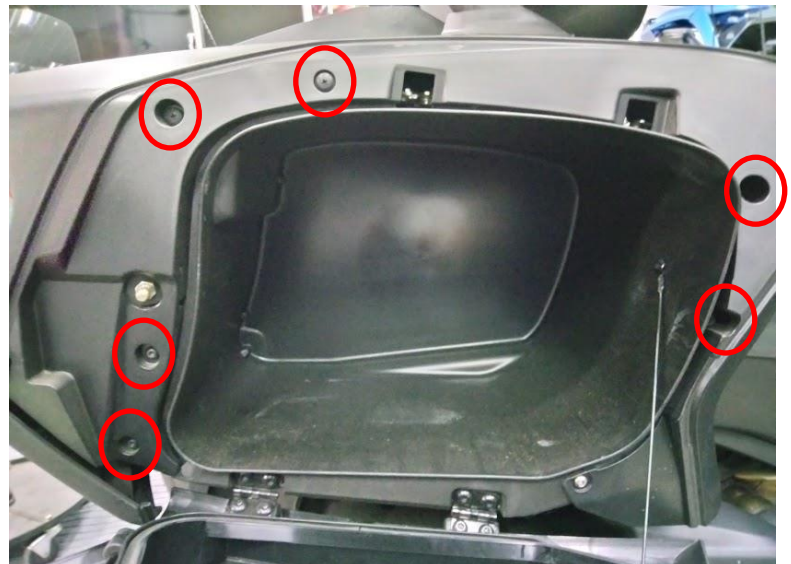
STEP 4.



STEP 4. Open the rear trunk hatch and release the trunk lock by turning the center knob counter clockwise. Once the trunk lock is released, push the latch release on the back of the trunk that will allow you to tilt the trunk on its hinge.

STEP 5. Open the right side cargo bin. Use a small pry tool to release the tension on the top spring lock on the shock absorber and remove the shock absorber. Next you will be removing the circled 6 screws in the picture below.

STEP 5.



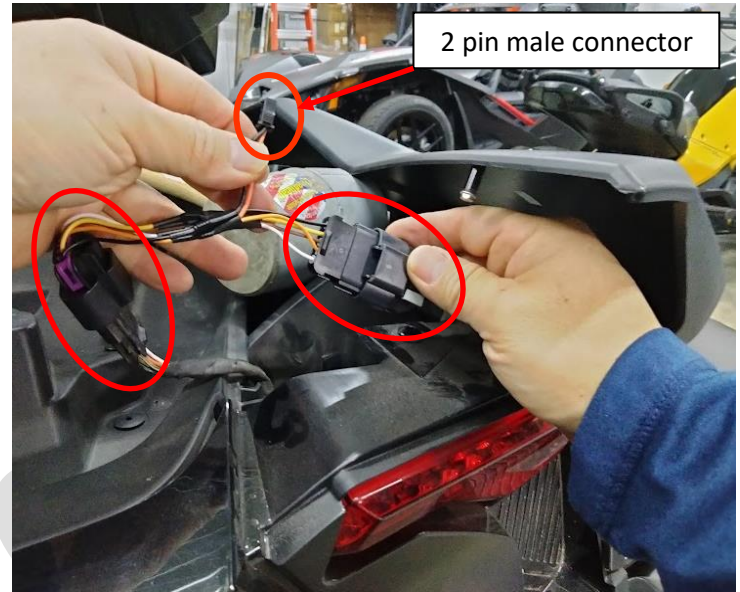
STEP 6. Remove the 2 screws in the picture below and carefully remove the panel



STEP 7. Carefully pull the panels apart to expose access to the OEM tail light harness connector.



STEP 8. Disconnect the OEM taillight connector. Before connecting the new 5 pin connector that is provided in your kit, add some die -electric grease to each end. You will use the 2 pin male connector for the extension wire provided for the next step.



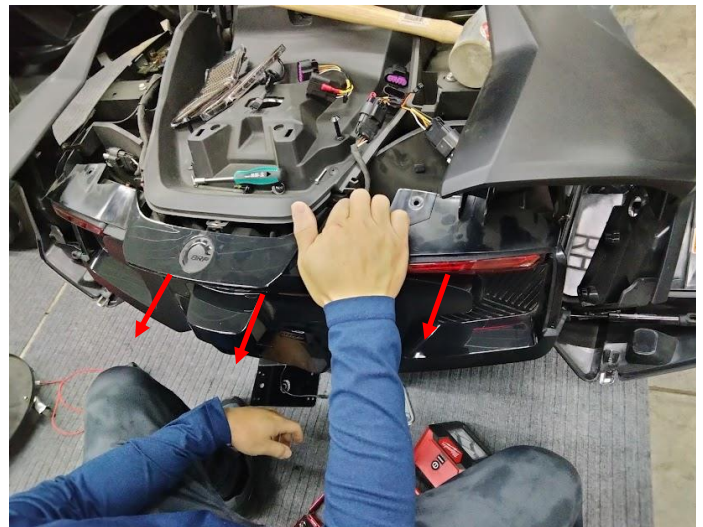
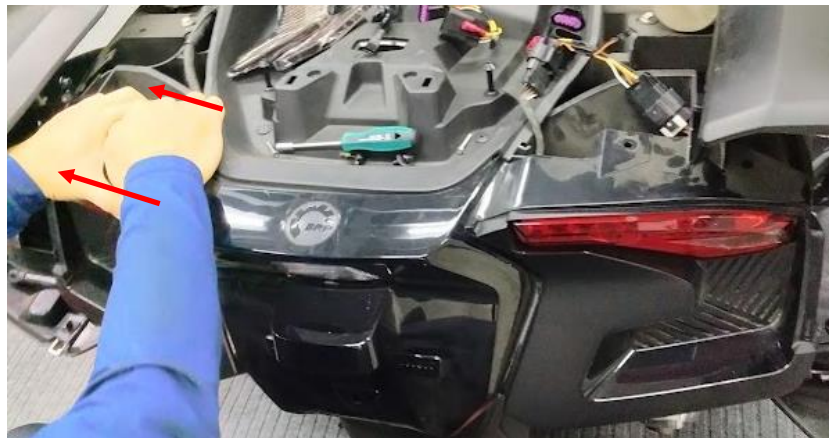
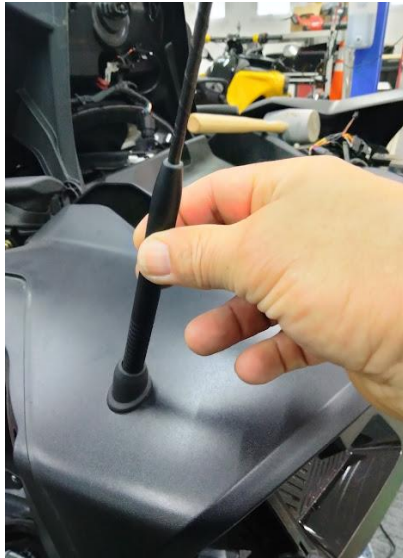
STEP 9. For this step you will need to drill a small hole to route the extension wire provided in your kit. Use a 9/16 drill bit to drill the hole center of the area depicted in the picture.



STEP 10. Remove the OEM antenna located on the left side above the cargo bin by turning the antenna counterclockwise.

Next, disassemble the left side cargo bin as you did in **STEP 5, 6** and **7** and separate the panels as you did on the right side to give you access to the screws holding the taillights in place.

Remove the 2 screws on each side holding the taillight assembly in place.



STEP 11. Next, take the wire extension provided in your kit, connect the female end to the 2 pin male connector on the new harness connector & route the male 2 pin connector end of the extension behind the taillight assembly down towards the backside of the license plate mount location where you drilled the 9/16" hole in **STEP 9**.



Final step is to connect the 2 pin male connector from the extension to the female 2 pin connector from the SPYDER plate.

Test the SPYDER plate LED by turning your key. Reassemble your SPYDER in reverse order and enjoy.

