

RYKER RGB CHASER KIT 1. TRICLEDD.COM



Contents for Kit 1

Shown above

(2) inverted 8" strip

(2) 8" strip

(2) 14" Strip

Not shown below are extensions with your kit

(2) 1:2 splitter

(1) 1:4 splitter

(1) 12" extension

(1) 24" extension

(1) 18" extension

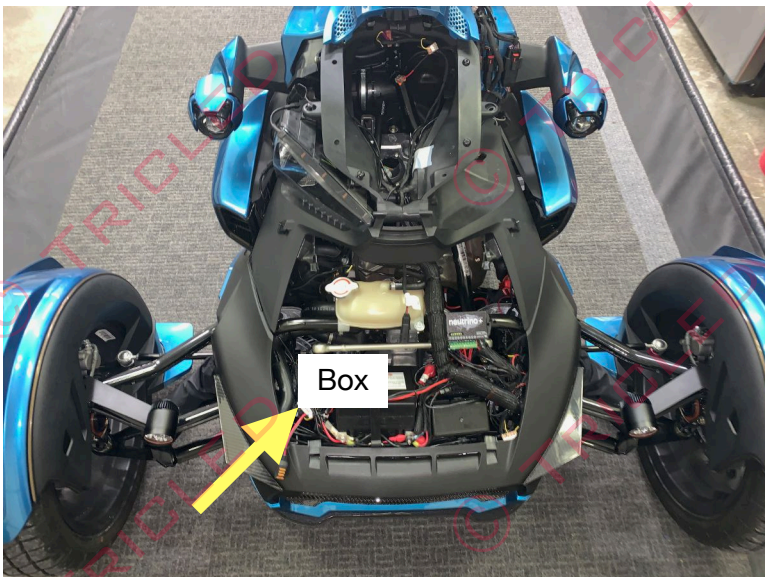
(2) 36" extension

1 Chaser module with remote and 4 outputs

Inverted 8" LED means the tape is adhered on the face of the Led where the light shines out. There is a special clear adhesive that will allow the light to shine through the adhesive. This section is applied above the Rykers headlight

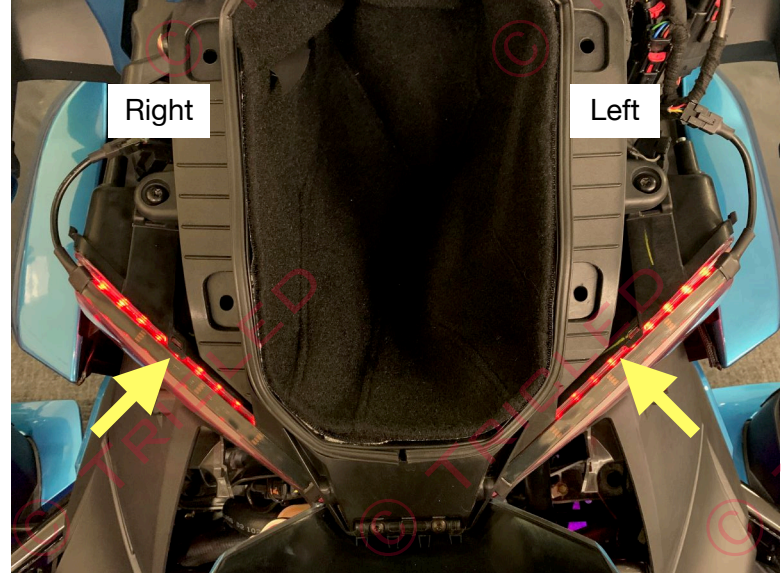


Normal Led has adhesive on the backside like normal and light shines out the top. See LED chips are visible on this 8" strip



Step 1. Position the module controller box to the left side of the battery. Crimp the ring terminal on positive and negative wire if connecting to the battery. If connecting to fusebox plug wires directly into the fusebox. Red is positive and black is ground.

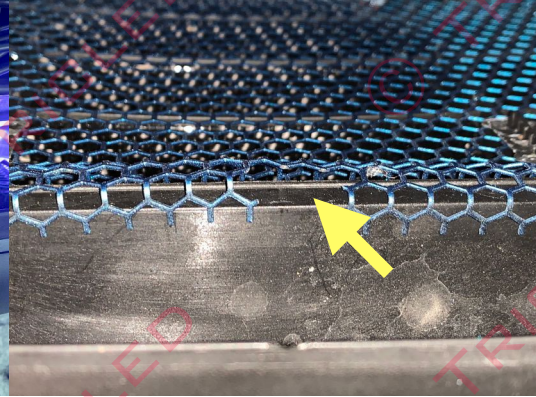
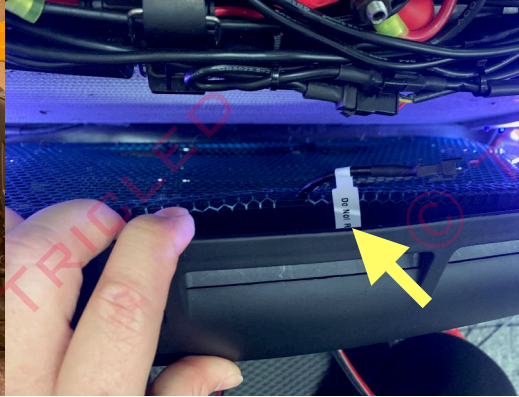
There is 4 ports on the module, you will use 1 port per full kit. For kit 1, will occupy only 1 out of the 4 ports. The other 3 are for other expandable kits, available separately. For kit #1 plug in a 1:4 splitter



Step 2. remove headlight top fairing covers. Clean the top of the headlight lens with alcohol, let dry and apply primer. Allow primer to dry before installing. Remove glovebox and insert a 18" extension from the left side of the bike over to the right side (throttle side). Connect 1:2 splitter end to right LED and insert 18" extension with left Led to the other open slot on the 1:2 splitter, then use a 36" extension from 1:2 splitter, and connect to 1:4 splitter on module

The LED is positioned upside down so the light will shine into the headlight housing to give great reflective look without the unsightly LED strip showing.

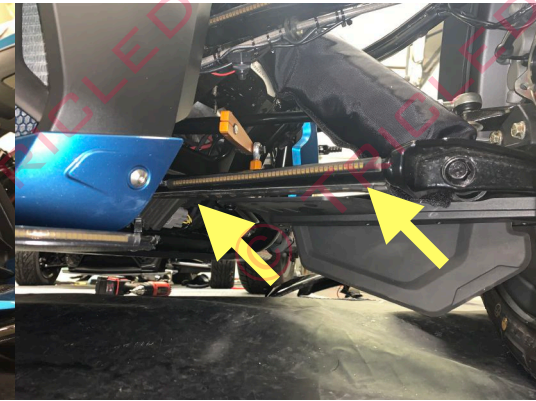
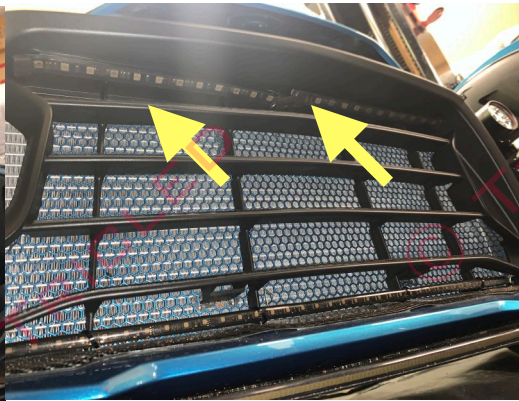
RYKER RGB CHASER KIT 1. TRICLEDD.COM



Step 3. Install (2) 8" Led under the front lip of the front grill. Clean the area with alcohol and apply primer. Wires will come together towards the center of the grill. See next 4 pictures

Step 4. Pull off the front clip to see the back side of the front grill, you will cut a couple of notches on the screen too allow the wire connectors to pass through. You will not see this once everything is installed

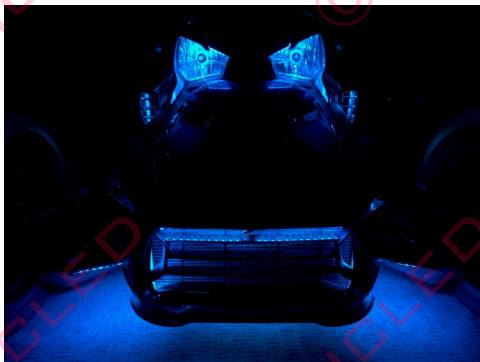
Notch center of front grill



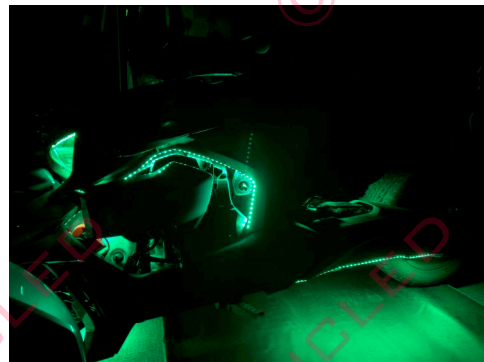
Install 2 of the 8" LED strip facing down with wires towards the center.

Install 2 of the 8" LED strip facing down with wires towards the center and out towards the back of the grill. Use a 1:2 splitter on both led's and use the 12" extension and plug into the 1:4 splitter on the module

Step 5. Install the 14" strip under the front A arm. Clean a-arm with alcohol and apply primer and let dry. Install LED with connector facing the center of the Ryker. Use the 36" extension for left side, use 24" extension on right side(throttle side). Connect each extension to the 1:6 splitter



Thank you for your purchase, see our kit #2 and 3 to add on to your existing system.



Kit 2 lights up side engine compartment
Kit3 lights up rear swing arm & under seat