

GEN 2 RYKER TRICFENDERZ, RALLY AND ALL RYKER



- Contents
- (2) custom dual color LED
- (2) primer/alcohol
- 2 - 1:2 splitter
- 2 - 24" extension



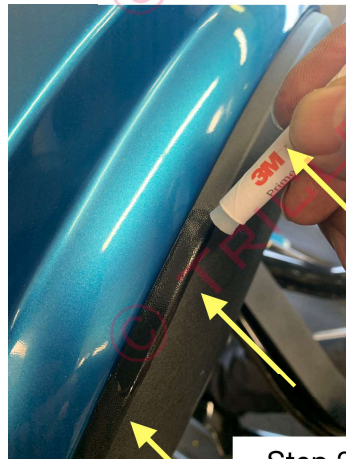
2022+ Rally fender



Non Rally models 2019+



Step 1



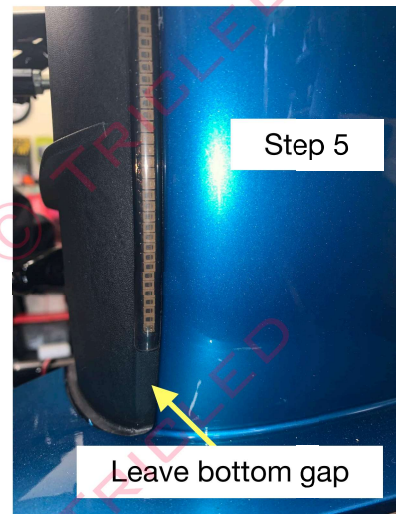
Step 2



Step 3

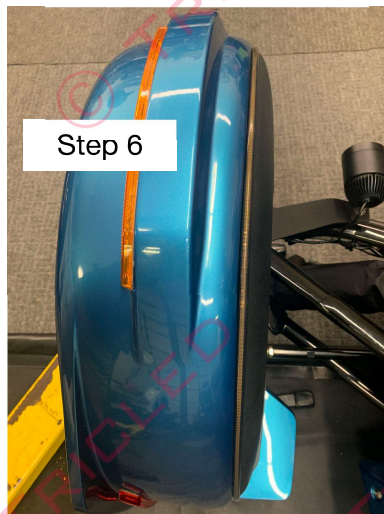


Step 4

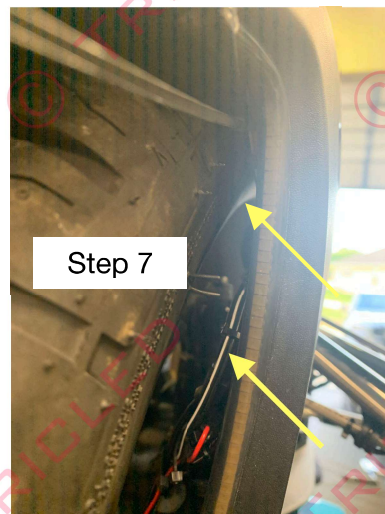


Step 5

Leave bottom gap



Step 6



Step 7

GEN 2 RYKER TRICFENDERZ, RALLY AND ALL RYKER

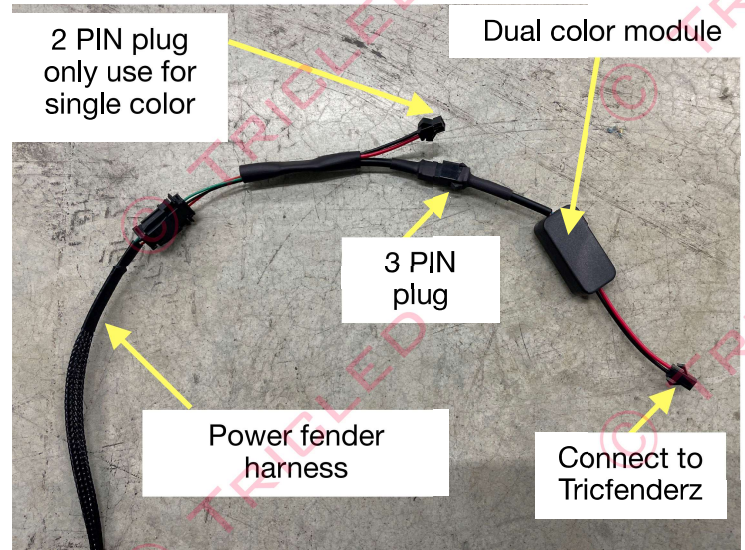
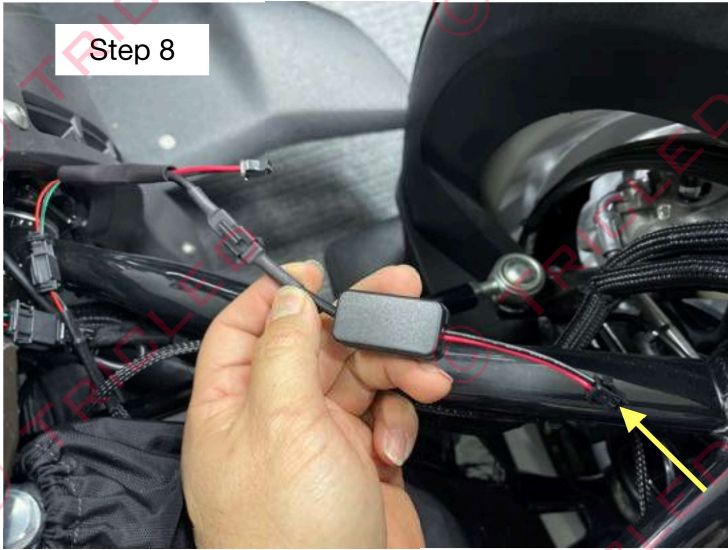


Illustration of wiring harness connections

Connect 24" extension from LED to dual color module box that came with the power fender harness. If running a DRL on the module box use the provided 1:2 splitter that comes in the kit

Step 1. Clean the flat area ridge with the supplied alcohol pad, 1 per side and let dry.

Step 2. Use the primer packet and apply 1 per side. Go over the entire ridge from front to back with multiple coats and let dry.

Step 3. Starting with the wire facing forward, apply the LED tube to the ridge by starting on the very front edge. Be sure to put the LED forward a bit to allow the wire to come straight down. Peel red adhesive backing slowly and careful to not peel the tape off of the tubing.

Step 4. Continue to peel off small sections of the red backing as you work slowly to the bottom rear and adhere on the flat ridge. The Led tube will not run completely to the bottom edge and this is by design and not short. **** Do not stretch the tube when adhering to surface ****

Step 5. There will be a slight gap towards the bottom rear by design. Rally model will be shorter than other Rally models due to the new fender design

Step 6. Repeat for other side.

Step 7. **This is a very crucial step as you run the wire down on the inside of the fender. Be sure to use 3-4 zip ties to secure all loose wiring up and out of the way from any and all moving parts.**

Step 8. Attach the 24" extension wire to the dual color module then to the power fender harness splitter. If you are already using the module for the DRL attach the 1:2 splitter to connect DRL and Tricfenderz together and use the same dual color module box for both items