

## CAN-AM RYKER Front Trunk Lid Push Button Lock Installation

**\*\*Please read instructions thoroughly before proceeding with installation in order to ensure proper fit and functionality\*\***

### **Included contents:**

(1) Push Button Latch  
(1) Pull Tab  
(1) Keeper  
(2) Screws  
(2) Templates  
Key (s)

### **Tools needed:**

Painters tape  
Phillip Screw Driver  
1/16" drill bit  
1" drill bit or step drill  
Drill  
Pliers  
Scotch Tape

### **Step 1.**



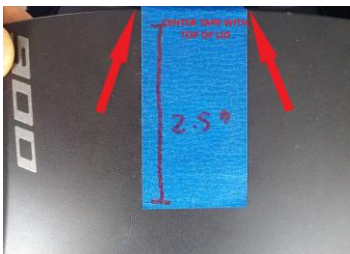
Before beginning the installation of the push latch lock, the push latch catch pin on the trunk lid must be removed.

### **Step 2.**



As you face the front of the RYKER, use a pair of pliers to gently twist the push latch catch pin while pulling to the right to remove it.

### **Step 3.**



Cut a 2.5" piece of painter tape and center it along the top edge of the trunk lid.

### **Step 4.**

Cut trunk lid template along outer border depicted in red in the above picture.

**Step 5.**

Align template along top edge of front of trunk lid. Use red arrows depicted in picture above to assist in proper alignment of template. Use scotch tape to hold the template in place.

**Step 7.**

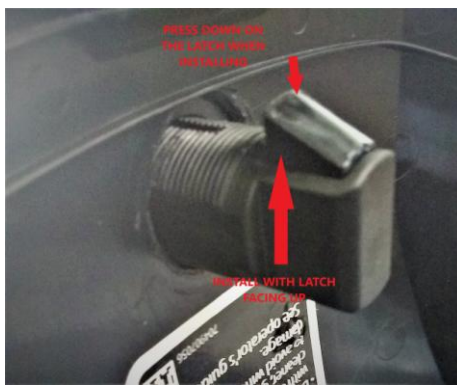
Peel off the template from the trunk lid as well as the painters tape. Use a file or sandpaper to clean and burrs.

**Step 8.**



Make sure that the pull tab and catch lever are facing in the same direction. When installed the pull tab and the catch lever will both be facing up as your looking at them as depicted in the picture on the right.

**Step 9.**



Press down on the latch catch lever while installing the latch through the 1" drilled hole on the trunk lid, making sure that the catch lever is facing up as depicted in the picture above.

**Step 10.**



Press down on the latch catch lever as you guide the locking washer over it and seat it up against the trunk lid wall.

**Step 11.**



Press down on the latch catch lever and guide the latch nut over it. Make sure it aligns with the latch threads before beginning to hand tighten the latch nut to avoid stripping the threads. Continue to hand tighten until the latch nut is seated firmly against the wall.

**Step 12.**



Latch nut must be tightened snug to make sure that the locking washer is properly seated in order to prevent the latch from twisting free.

**Step 13.**



Latch lever catch should be aligned and pointing up once properly secured before moving on to next step. keeper that will be installed inside of the trunk a

**Step 14.**

Cut out the template for the latch catch (in red)

**Step 15.**

**Step 16.**



Fold the template along the dotted lines as depicted in red above. Center the template inside the trunk above the USB connector and along the top edge of the storage compartment. Use scotch tape to secure the template.

Align the top of the template with the push catch latch and secure the template with scotch tape in place.

**Step 17.**

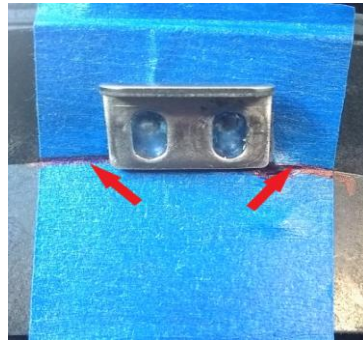
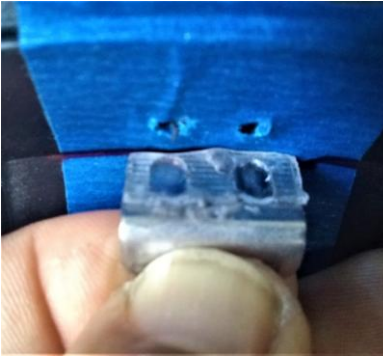
**Step 18.**



Use a **1/16" drill bit** to drill pilot holes using the template as a guide. If the template was properly aligned, the pilot holes should exit slightly above and to the left and right of the push catch latch.

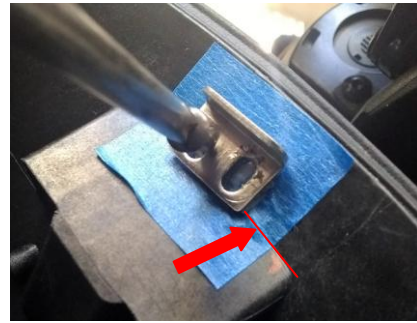
Remove the 3M tape protective cover from the back of the catch keeper.

**Step 19.**



Align the latch catch keeper along the crease in the compartment wall, depicted in the picture in black, and press up against the wall of the compartment to align the pilot holes with the holes of the latch catch keeper.

**Step 20.**



Use the 1/4" screws provided to attach latch catch keeper. Make sure the bottom of the keeper stays aligned with crease in the compartment wall.

**INSTALLATION COMPLETE**

- Close lid and check to make sure the latch has set in the keeper by gentle pulling up on the pull-tab.
- Check the function of the locking mechanism by inserting the key and turning clockwise to lock.
- Remove the key and attempt to open the lock by pushing down on the button. The button should not push down.
- To unlock the latch, insert the key and turn counterclockwise, push down on the button and lift the lid open by pulling on the tab.

**Hypn@tic Concepts**

**\*\*CONTACT HYPNOTIC CONCEPTS, LLC FOR ANY QUESTIONS\*\*  
info@hypnotic-concepts.com**

