

## CAN-AM RYKER- 2" Auxiliary Driving Fog Lights Installation Instructions

**\*\*Please read thoroughly before proceeding with installation in order to ensure proper fit & functionality\*\***

### TOOLS NEEDED:

5mm Allen wrench  
19mm wrench  
19mm socket  
(2) 10mm wrenches  
Torque wrench  
Needle nose pliers  
Pin/nail punch  
Small Hammer

### PARTS LIST:

(2) TricLED waterproof fog lights  
(2) Control Arm Brackets  
(2) Fog Light Brackets  
(1) Push Button Bracket  
(1) Harness with Push Button  
(2) 6mm x 35mm bolts  
(2) nylon spacers

### STEP 1.



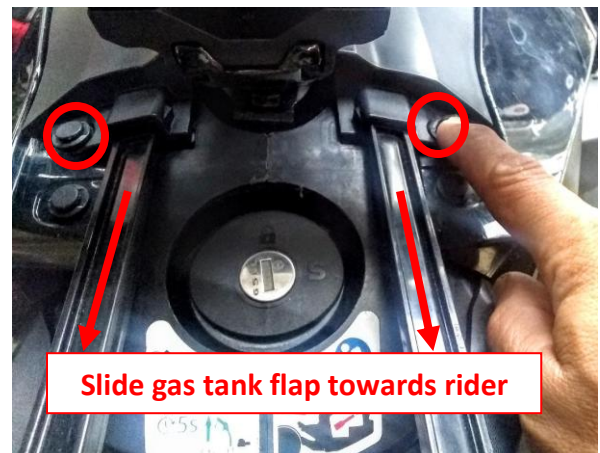
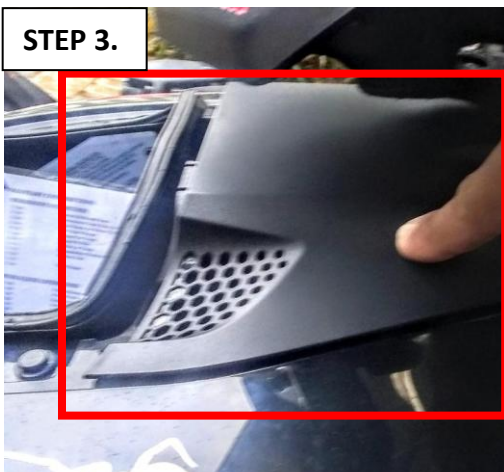
Remove the front hood by lifting on the inner tabs and pulling the hood down away from the Ryker.

### STEP 2.



Remove side-fairings by removing 3 pushpins from both sides.

### STEP 3.



Remove the upper fairing by sliding the fuel tank flap towards the rider and removing the 2 pushpins.

**STEP 3.**



Before removing the storage compartment, remove the 2 screws from the front of the storage compartment and disconnect the USB power wires from the back of the storage compartment.

**STEP 4.**



Remove hex nut with 19mm wrench and washer from the upper ball joint located on the top of the upper suspension arm on both sides of the RYKER. Set these aside, you will be reusing both of these.

**STEP 5.**



**Fog light Bracket**

**(1)**



**Left**

**Handlebars**

**Right**

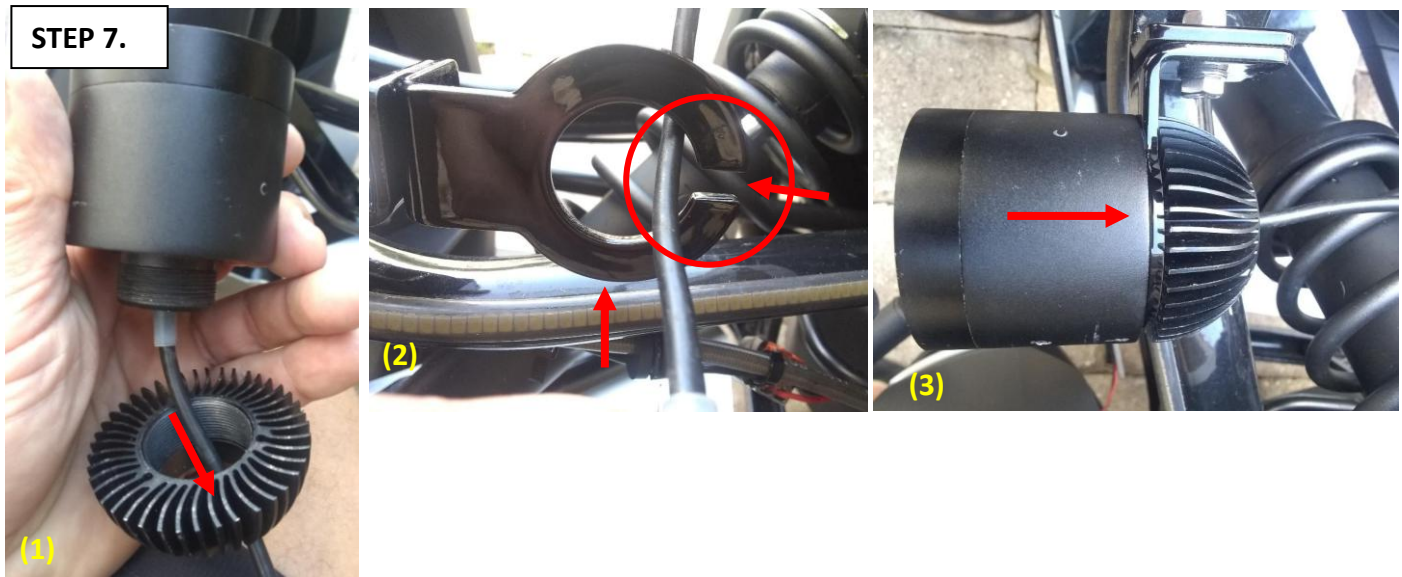


**\*\*In picture (1) the control arm brackets are depicted as they should be mounted on the Ryker.\*\***

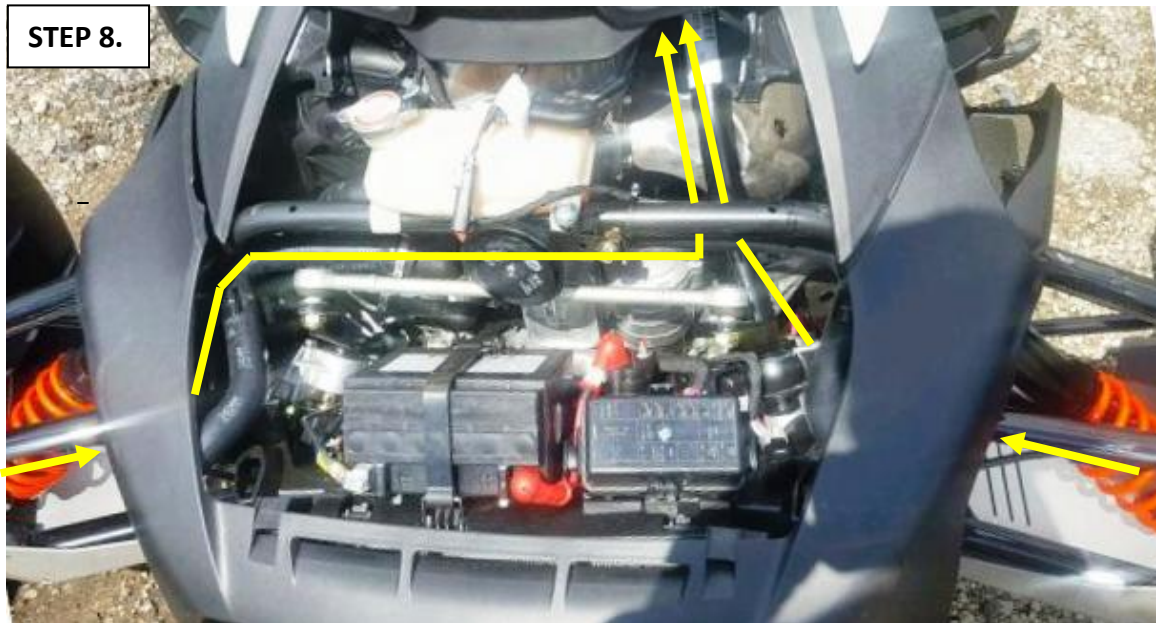
Attach the fog light brackets to the control arm brackets utilizing provided hardware. Insert a 6mm washer into the 6mm bolt, hold the brackets together then insert the washer & bolt through the fog light bracket. Insert the 2nd washer through the end of the bolt on the other side of the control arm bracket then add the 6mm lock nut & tighten the nut until the brackets are snug but do not tighten completely. You will need to adjust the angle of the fog lights once installation is completed.



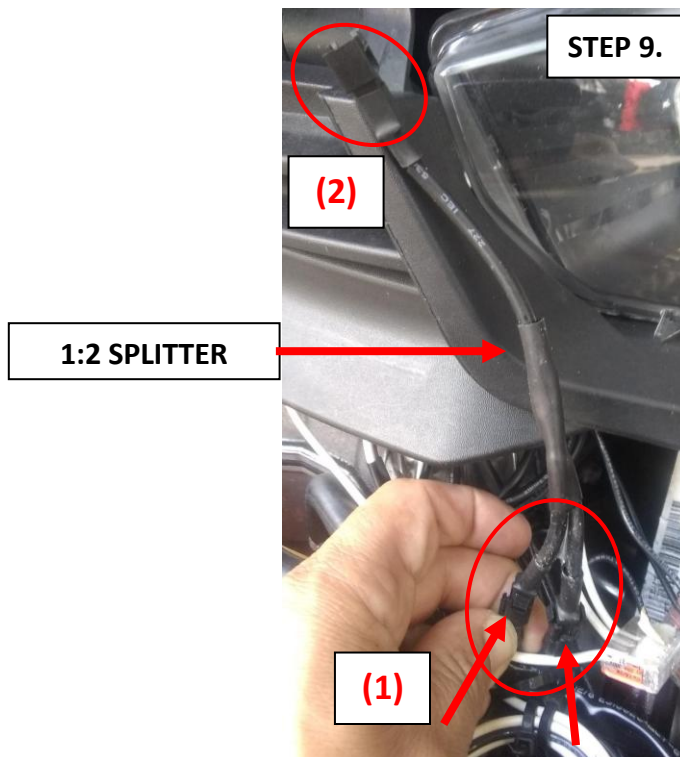
Attach control arm bracket to the upper control arm and ball joint. Reinstall the factory washer and nut that you removed in STEP 4 and tighten snug but DO NOT torque to spec. You will need to adjust the brackets to your liking once install of harness is complete.



- (1)** Remove the cooling fin bezel from the fog light & slide it away from the housing.
- (2)** Guide the fog light wire through the slot in the fog light bracket.
- (3)** Seat the threads from the fog light housing through the hole in the fog light bracket. Reattach the cooling fin bezel and hand tighten. Repeat every step for the opposite side.



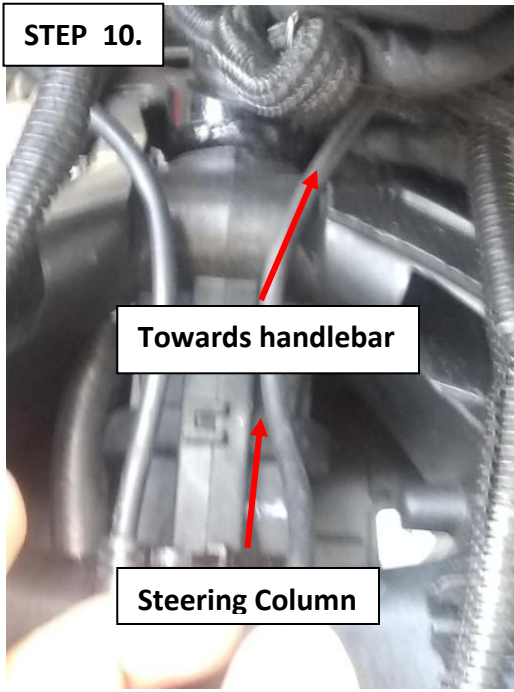
Route the wire for each fog light underneath the bottom of the forward, upper control arm and secure with zip ties, then continue to route the wire and secure the wires underneath the cross bar with zip ties.



- (1)** Use the 1:2 splitter provided & connect the ends of the 2 fog light wires connectors to the splitter.
- (2)** Next, attach the 38" wire provided in your kit to the single connector of the splitter & begin to route the wire along the factory wiring harness. The 2 pin connector will continue to follow the factory wiring harness and will exit where the side fairing was removed.

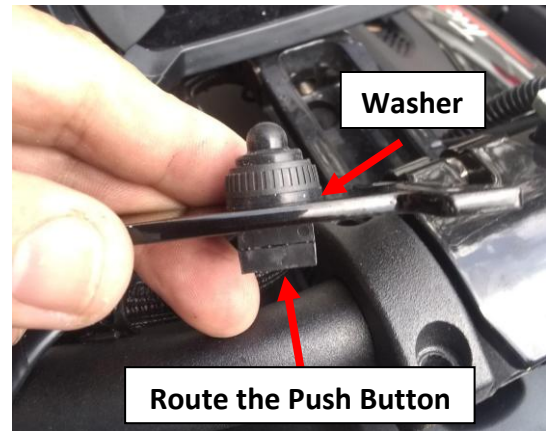
**\*\*Secure the wire with zip ties along the factory wiring harness\*\***

**STEP 10.**

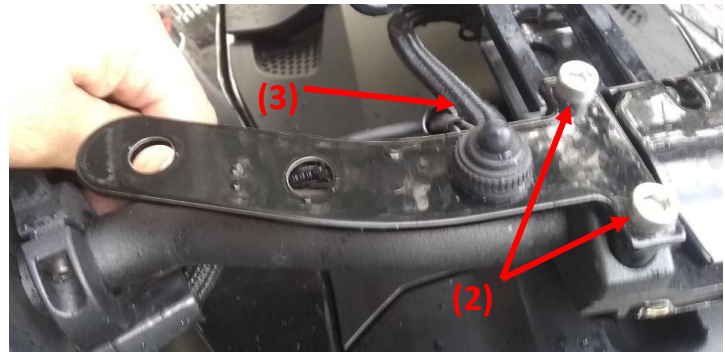


The end of the wiring harness has a black push button on it. Route that push button along the factory wiring harness thru the area where the upper fairing was removed in STEP 2 & follow the steering column until the push button is past the handlebar. Remove the top button cover and washer as in picture above.

**STEP 11.**



For the next step you will need the push button handlebar bracket, (2) 6mm x 35mm bolts and (2) nylon spacers. The bracket is ambidextrous and can be mounted on either side of the handlebars. Once mounted, the end of the bracket should sweep forward as in the picture on the left. Once you decide which side you will be mounting the bracket to, insert the push button thru the bottom of any of the holes then add the washer on top and twist on the button cover snug. Do not over tighten.



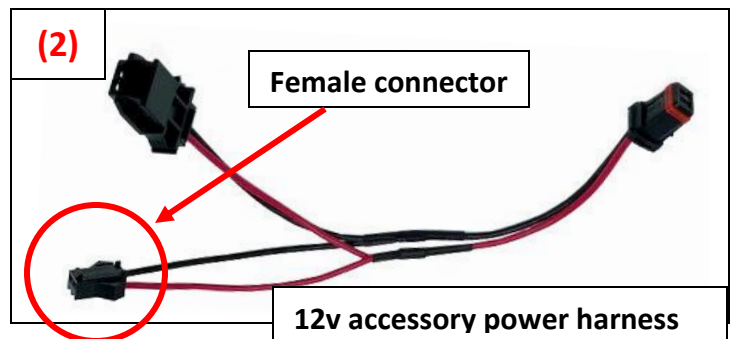
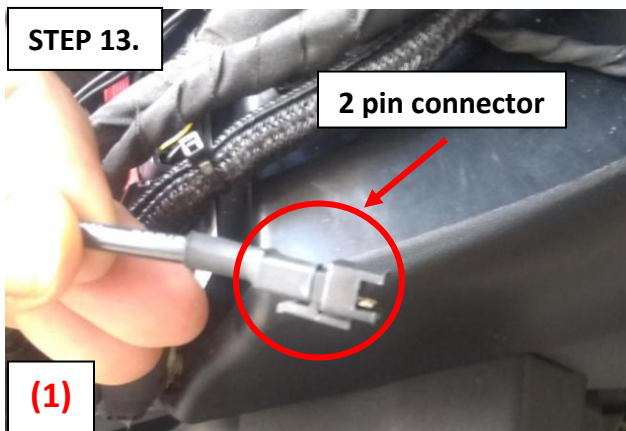
Next, remove the two bolts from the handlebar clamp of the side you will be mounting your push button bracket to. **You will not be reusing these factory bolts.**

**(1)** Place the (2) nylon spacers in the holes where the factory bolts were removed.

**(2)** Place the push button bracket on top of the nylon spacers and align the bolt holes.

Next, take the (2) 6mm x 35mm bolts provided in your kit and screw them into the holes, use a 5mm Allen wrench to evenly tighten the bolts down and **torque to 9.6 lb-in.**

**(3) ENSURE THERE IS PLENTY OF SLACK IN THE PUSH BUTTON HARNESS** to compensate for the handlebars moving when making left or right turns. Failure to do so may damage the push button wires from overstretching.



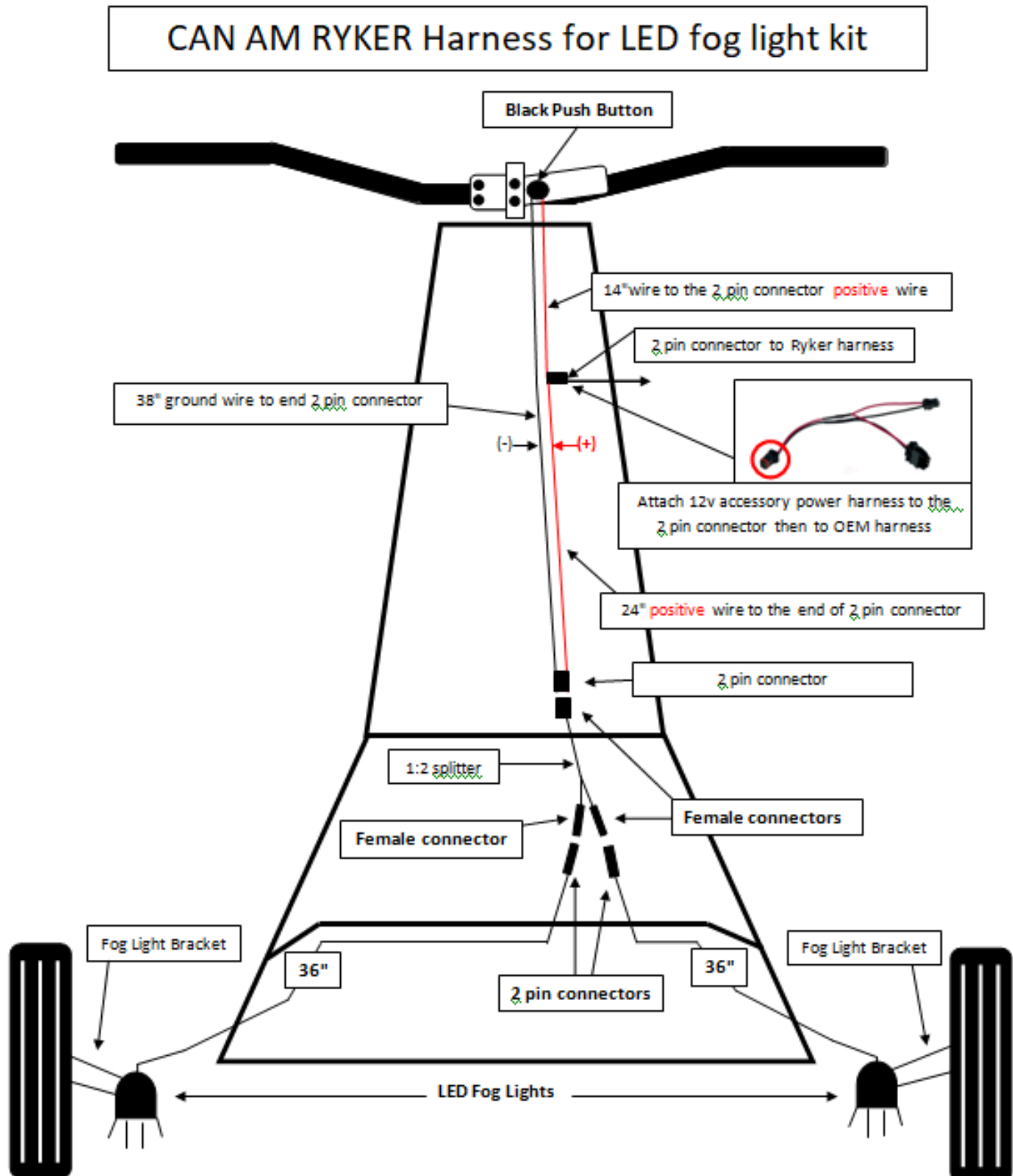
Next, **(1)** locate the 2 pin connector on the wiring harness (refer to the wiring diagram on the next page).

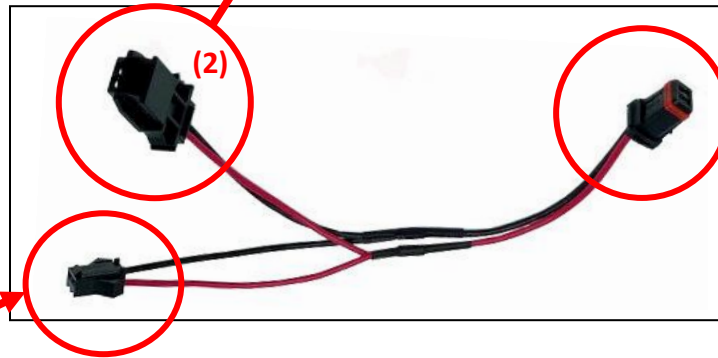
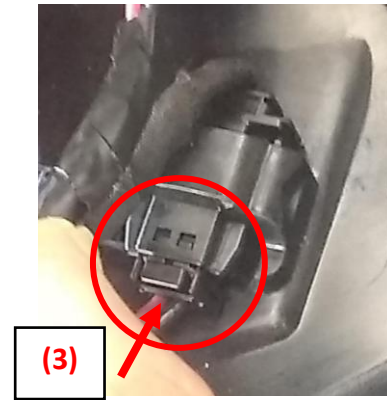
**(2)** Take the 12v accessory power harness provided in your kit and connect the female end to the 2 pin connector.

**(3)** Make sure that you routed the 2 pin connector along the factory wiring harness and it exits where you removed the side fairing. Attach the 12v accessory power harness provided in the kit to the 2 pin connector on the wire harness.

Use the diagram below as a reference to continue to the next step.

Attach the 12v accessory power harness provided in the kit to the 2 pin connector on the wire harness & route the power harness through the hole where the factory harness leads out towards the right fairing as your looking at the Ryker.





**Plugs into 2 pin connector**

- (1) Remove the factory accessory connection and locate the 2 pin connector on the wiring harness provided (refer to the wiring diagram on the next page).
- (2) Insert the female connector from the 12v accessory harness into one of the ports on the Ryker that will hold it in place.
- (3) Insert the male factory plug into the 12v accessory wire harness female port.
- (4) Insert the male plug from the 12v accessory wire harness and plug it into the port that you removed the

Installation of the harness is complete. Before reassembling the fairings, ensure that all cables are secured and do not obstruct the reassembly process.

**\*ENSURE THERE IS PLENTY OF SLACK IN THE PUSH BUTTON HARNESS\*** to compensate for the handlebars moving when making left or right turns. Failure to do so may damage the push button wires from overstretching.

Before you replace the storage compartment removed in STEP 3, ensure all wiring is secured and does not obstruct the installation of the storage compartment.

Replace the side fairings that you removed in STEP 2.

Replace the upper fairing that you removed in STEP 3.

Before replacing the front hood that you removed in STEP 1, ensure that all of the wiring is secured and not interfering with any moving parts.



## STEP 14

After aligning the fog lights brackets and fog lights to your preference, ensure the nuts are torqued to **63 lbf\*ft** and install a cotter pin in each hole that runs thru the end of the bolt.

- (1) Make sure that the hole is not obstructed by the nut.
- (2) Take 1 of the 2 cotter pins provided and insert the cotter pin into the hole of the upper ball joint bolt.
- (3) To help assist with inserting the cotter pin, use a pin/nail punch and small hammer to light tap the cotter pin thru the hole.
- (4) Use needle nose pliers to bend the cotter pin to ensure that the cotter pin is secured in place.



Perform a functions check of the fog lights by pressing the push button once. This should turn on the lights. Press the button again and this should turn the fog lights off.

If the fog lights do not turn on and off properly, start over from STEP 1 to ensure the installation was done properly.



**\*\*Please read instructions thoroughly before proceeding with installation in order to ensure proper fit and functionality\*\***

**HYPNOTIC CONCEPTS LLC** \* info@hypnotic-concepts.com \* 813-658-5774