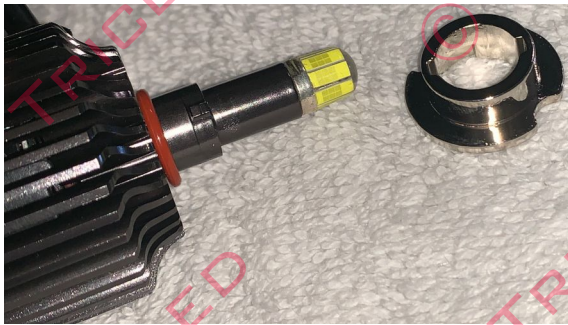
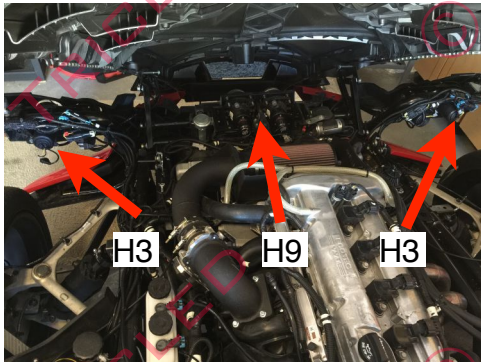


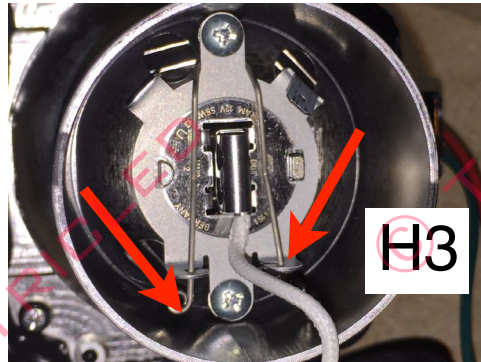
Polaris Slingshot LED headlights for USA/Canada version



There are two types of bulbs that we offer, to the left is our elite 360 degree light output and to the right is our T2 standard double post LED headlight. Both provide big improvements in style and visibility. Installation process is very similar to both, please see below



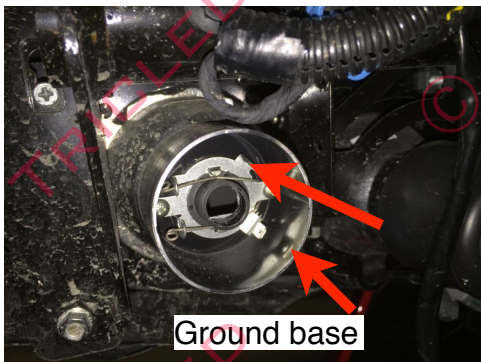
Outboard light(s) uses H3 bulb. Center uses H9. Please note special base used for H3.



Remove the rubber boot from the back of the outboard lights. Using a long nose plier, undo the metal clip that holds the factory H3 bulb and remove.

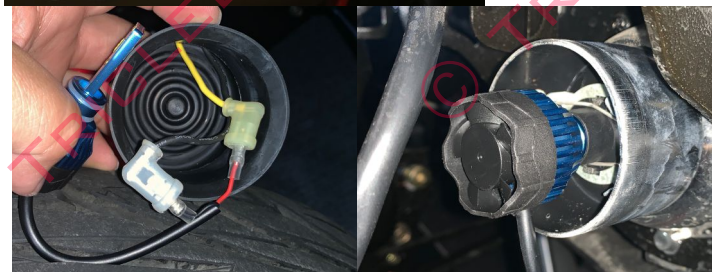


Remove the base from the H3 bulbs only by pulling up from the stem



Position the base on the light housing. Make sure it sits flat. There is metal tab on top and bottom and it fits only one way. Once the base sits flat, place the metal clip around the base and re-hook on the metal base. Pull the black wire from the ground base of the light (See red arrow). You will attach this to the black ground on the LED black wire. Connect the yellow positive to the red wire on the LED.

Use Di-electric grease and coat all electrical connection to



Cut and x on the back of the rubber boot to allow the fan to vent, leave a slight gap between the LED and the back of the rubber boot. For 360 LED disconnect the driver and place it outside of the boot. Run the wire through the back of the boot where you cut the x and reconnect to LED headlight.

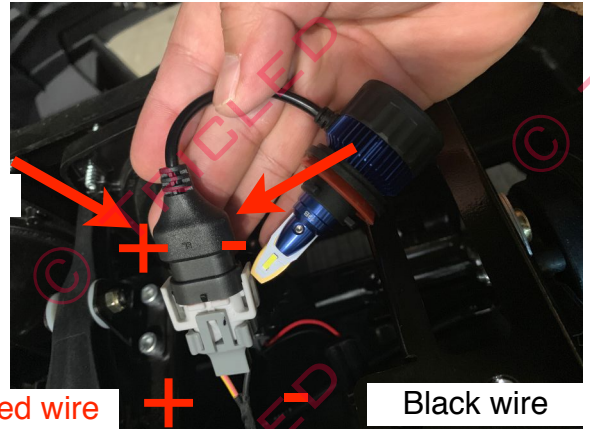


Polaris Slingshot LED headlights for USA/Canada version

Slingshot H9 Center headlights

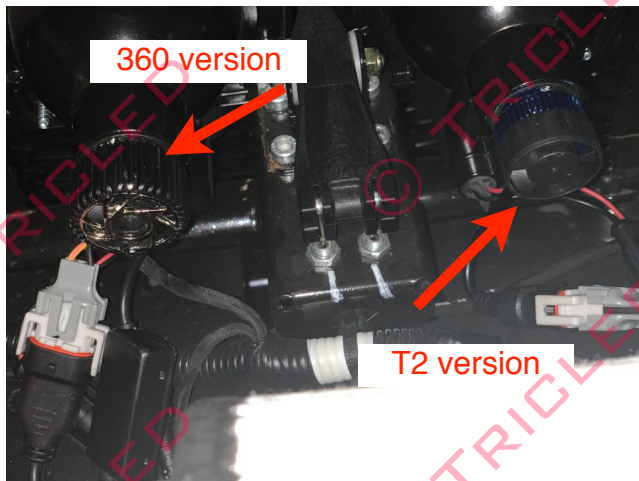


Align the + to the colored wire on the SS



Colored wire

Black wire



360 version

T2 version

To remove old halogen bulb, twist counter clockwise on and pull back, disconnect from harness. Install new LED headlight, insert and line up the base until it inserts flat then turn clockwise to lock.. When connecting the new LED bulbs to OEM socket please note the polarity of the harness marked above (+) (-).