

RYKER LED HEADLIGHT BY TRICLEDD.COM

Please refer to pg 126-128 in the owners manual for additional illustration and explanations



Move gas tank cover back and remove the 2 push pins on each side



Remove 4 push pins under front cover, remove orange panel shown



360 LED headlight or



T2 LED light



Remove headlight wire harness



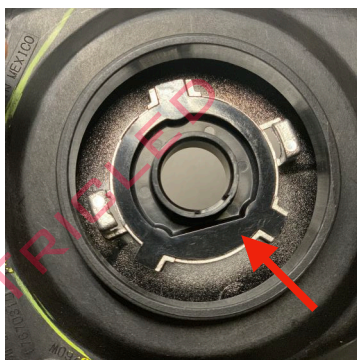
Remove rubber boot cover



Remove white plastic base by turning it counter clockwise



Remove factory headlight



Place the new LED base into housing.



Place the new lock ring over the base into position. It is important that you push gently down on one side of the lock tab and turn clockwise. Once one side is in push and turn clockwise for other side of lock clip. Do not force twist the lock.

RYKER LED HEADLIGHT BY TRICLEDD.COM



360 LED install

Slide the LED through the back of rubber boot



360 LED install

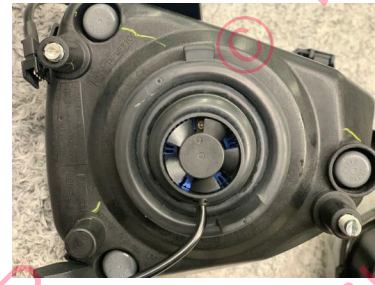
Insert directly into the base until snug then slide the boot over the cover to seal

Position the wire into the 6 o'clock position for both left and right side.



T2 LED model

Slide the LED through the back of rubber boot, line up the tab on LED into the base and turn clockwise. Slide the boot back over the housing until snug



T2 LED model

Position the wire to be at the 6 o'clock position for both left and right side.



Connect OEM harness to LED



Zip tie any loose wire harness and tuck neatly behind the headlamp