

Please note, you must have this extension splitter kit to install this any TricLED dual color kit.

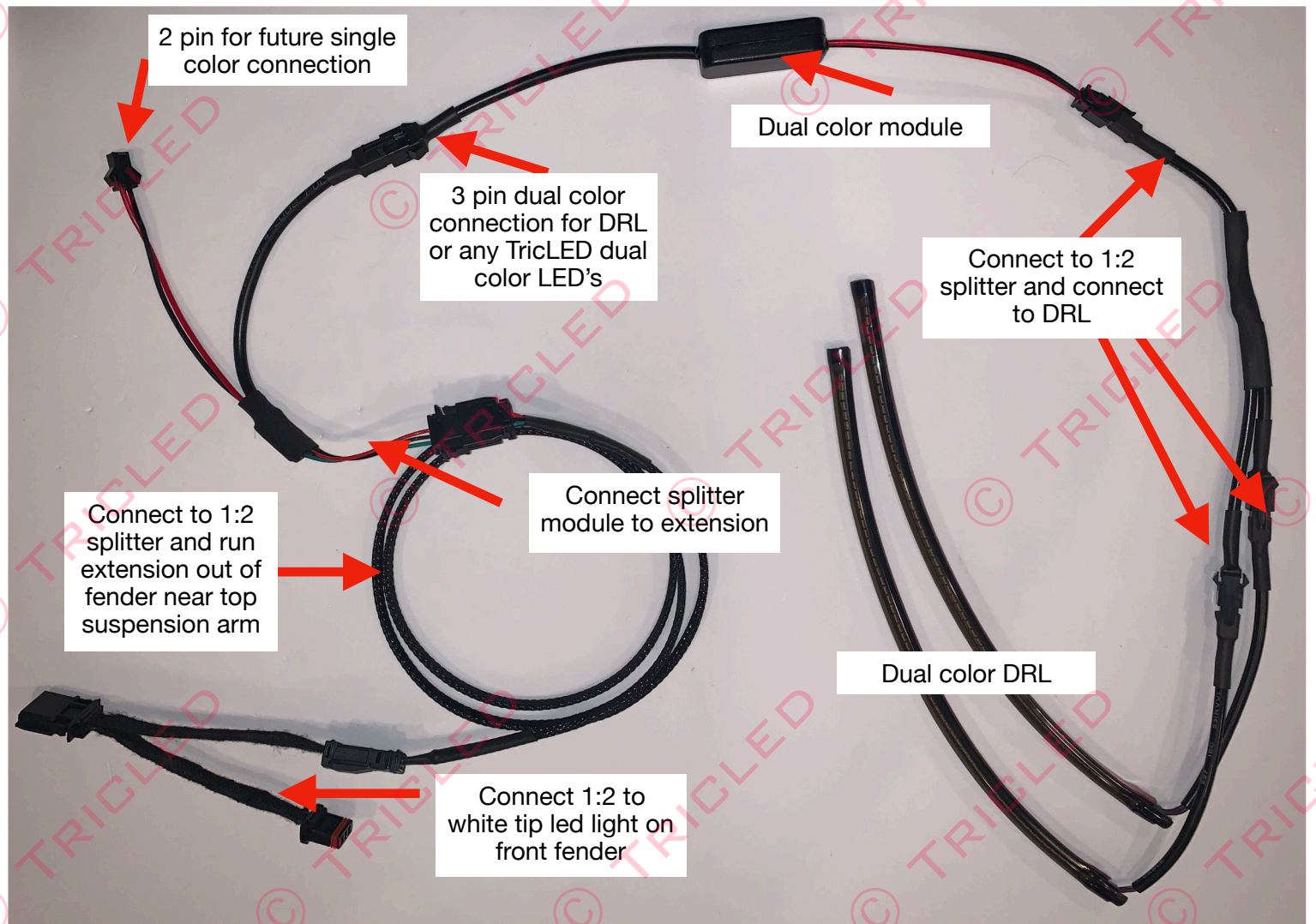
If you do not have this, you can purchase this kit to add on to your fender setup. All 2019 Ryker/Spyder now uses this setup for dual color power except for 2019 RT only which requires turn signal power from the mirror itself, see below for illustrations.



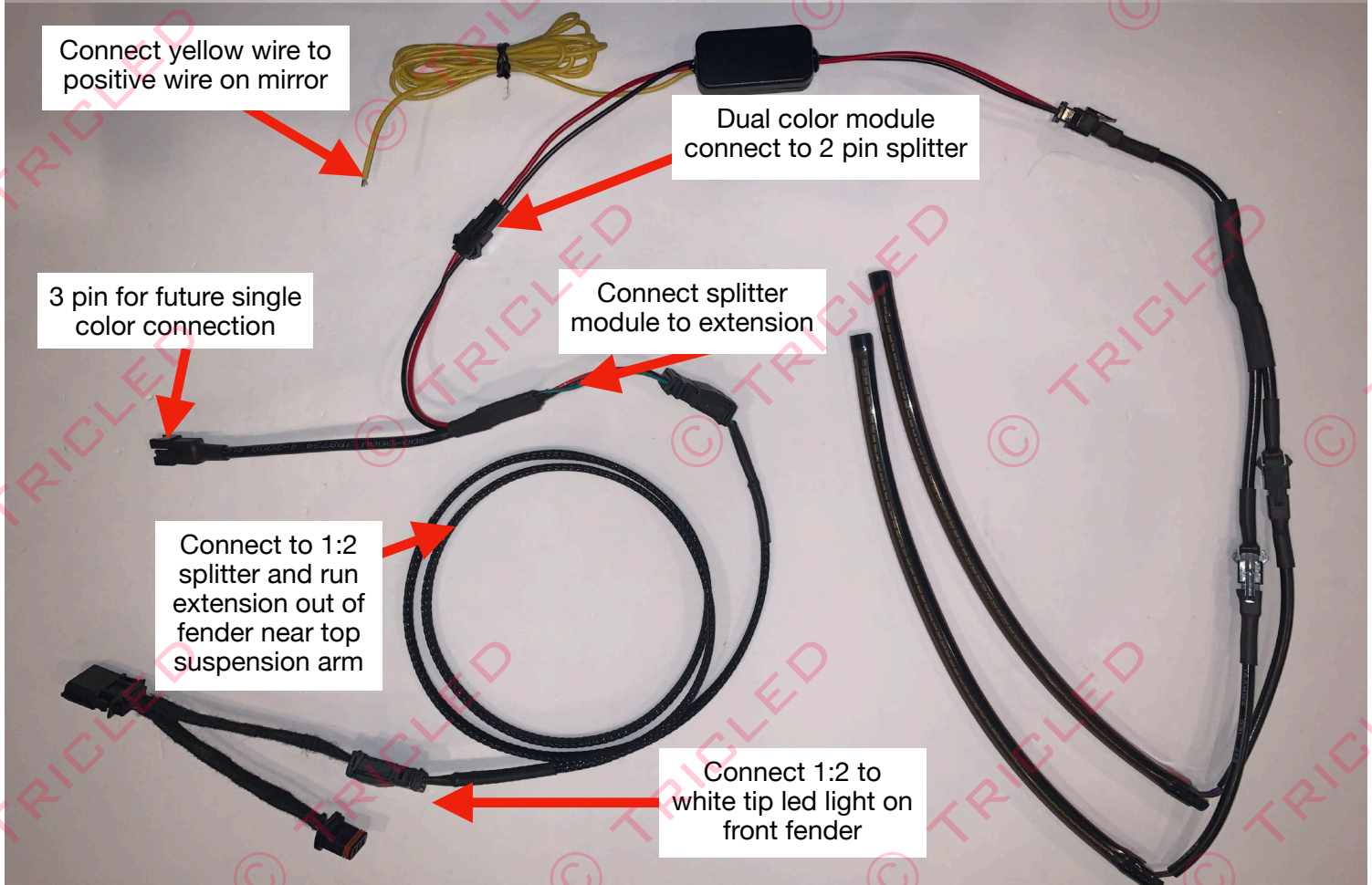
1:2 splitter wire kit for future expansion of plug and go single color DRL, dual color DRL, sequential DRL or any other LED add on.

2019+ Spyder / Ryker Dual Color DRL LED by [TricLED.com](http://TricLED.com)

This kit is for all 2019+ Ryker, F3, F3L and 2020+ RT and RTL



# This kit is only for 2019 RT / RT L



2019+ Spyder / Ryker Dual Color DRL LED by [TricLED.com](http://TricLED.com)



Install 1:2 splitter harness to the front fender LED light. Connect one side of the splitter to 3' extension. Connect the other open side of 1:2 splitter to factory OEM wire.



3' extension will run out of the fender to connect any of our single/dual color lighting kit, such as DRL on A-arms or skid plate with LED.



Wires face inward

Clean surface with the provided alcohol swab let dry and apply primer. Install LED with wires facing inwards towards center of bike.



Run the extension out of the fender and across the bottom of the A arm to reach the DRL module towards the center of the bike. Zip tie all loose wires.

If installing a 2019 RT see next page for getting power to the yellow turn signal wire

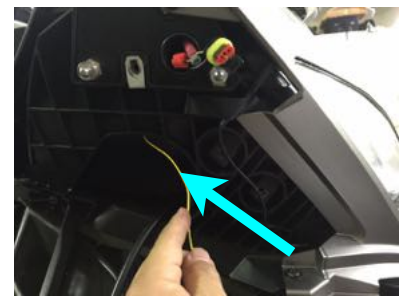
**BELOW IS FOR 2019 RT ONLY TURN SIGNAL WIRE ONLY. RUN THE TURN SIGNAL WIRE FROM FENDER UP TO THE MIRROR TURN SIGNAL UP TOP AND USE THE SUPPLIED T TAPS AND MALE SPADE. ONE FOR EACH SIDE**



REMOVE THE TWO BLACK PLASTIC COVER UNDER FRONT TRUNK AND UNSCREW AND REMOVE FRONT FASCIA



LOOSEN UP ALL 4 BOLTS FROM THE HEADLIGHT HOUSING AND PULL OUT SLIGHTLY AND REACH IN AND PULL OUT THE TURN SIGNAL HARNESS FROM BEHIND THE HEADLIGHT. USE THE SUPPLIED T-TAP AND TAP THE POSITIVE LINE ON THE MIRROR AND CONNECT AN EXTENSION WIRE TO THE WHITE BLINKER MODULE AND CONNECT. REPEAT FOR OPPOSITE SIDE.



Run the black wire behind this opening and pull it out of the opening where the OEM harness exits. Peel back the OEM harness and use the T-Tap on the positive colored wire. Crimp the black wire with the male spade and insert into T-Tap.