

ADDENDUM FOR 2019 F3 / F3T / F3L SKIDPLATE INSTALLATION



Remove the 4 push pins on the front trunk tub and remove to expose the battery.

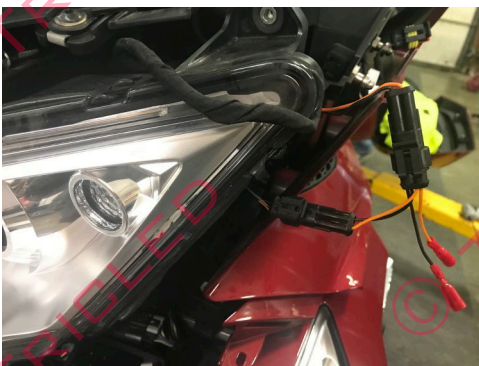


To the right of the battery locate the factory harness zip tied. Pull the wire with white tag that marked customer accessory. Cut off end and reveal 2 wires. Black ground and colored wire is positive.



Use the T-Tap(C) and crimp the factory customer accessory harness. Crimp spade(B) to the (A) harness ends. Connect (A) to (D) harness. Use Di-Electric grease on all connectors to prevent corrosion. Connect (D) harness and route it to the bottom and connect it to the Skidplate LED.

ADDENDUM FOR 2019 RT SKIDPLATE INSTALLATION



For the 2019 model, there is no longer a harness up front and power will now be taken from this 2 pin OEM harness behind the factory headlight. Remove fairing and headlight on one side only.



Connect harness A to the back of the headlight corner lamp. Plug the supplied OEM harness (A) then connect the factory plug behind it in series. Connect harness (B) to harness (A) then route it down and connect it to the skid plate LED.