

MADSTAD

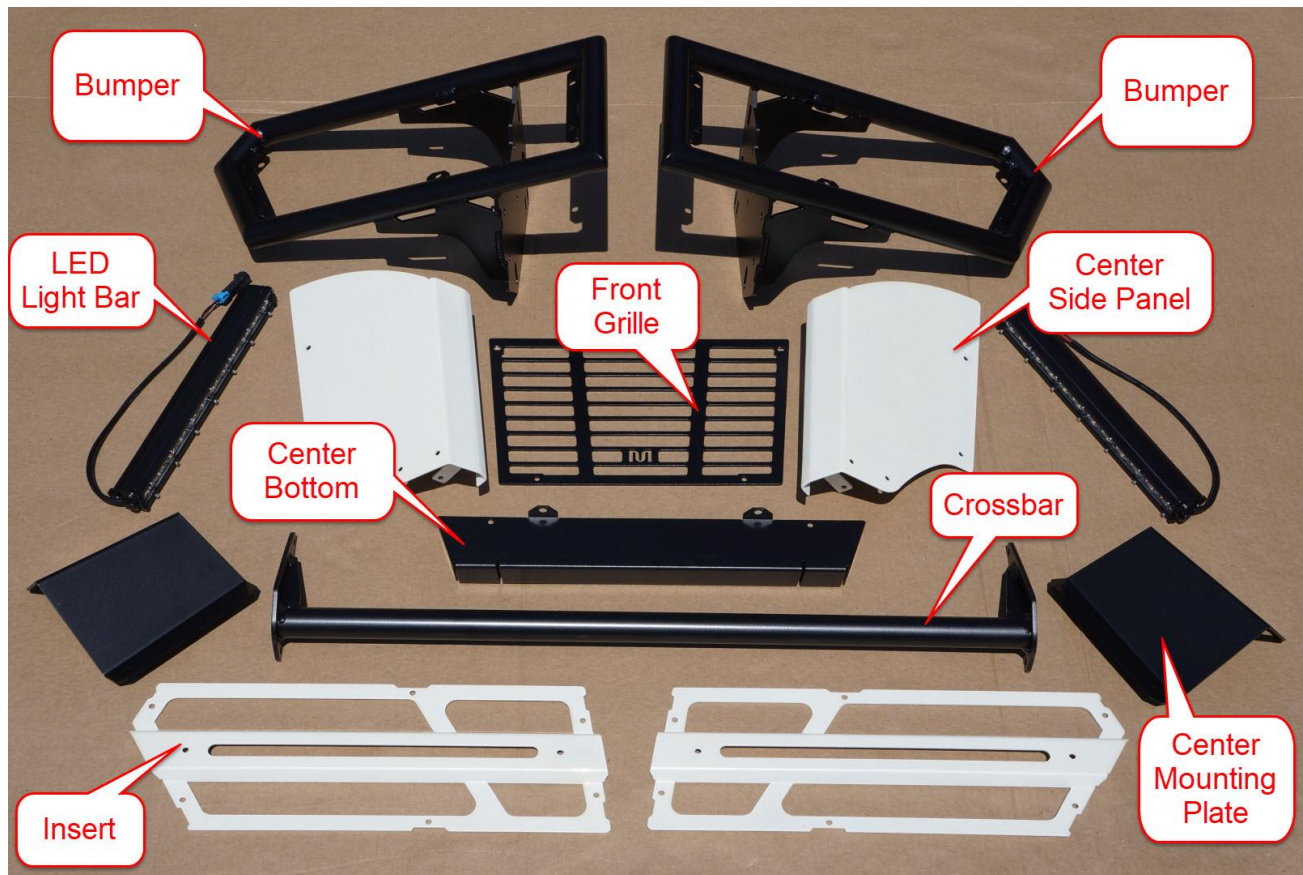
E N G I N E E R I N G

Ultimate Slingshot Bumper

Please read this entire manual before proceeding with installation.

Kit Components:

- (2) Bumper assemblies
- (2) Bumper Insert plates
- (2) LED light bars
- (2) Center Side panels
- (2) Center Mounting plates
- (1) Front Grille
- (1) Center Bottom plate
- (1) Crossbar



Hardware:

Each section has its own hardware packet labeled by letter as follows:

Center Bottom Plate Hardware (A)

- ☐ (6) M6 x 12 button socket screws
- ☐ (6) M6 flat washers
- ☐ (6) M6 nylock nuts

Center Mounting Plates Hardware (B)

- ☐ (4) M6 x 16 button socket screws
- ☐ (4) M6 flat washers
- ☐ (4) M6 nylock nuts

Crossbar and Center Assembly Hardware (C)

- ☐ (10) M6 x 20 button socket screws
- ☐ (10) M6 flat washers
- ☐ (10) M6 nylock nuts

Bumper-To-Frame Hardware (D)

- ☐ (4) M6 x 20 hex head flange bolts
- ☐ (4) M6 metal flat washers
- ☐ (2) M8 metal fender washers

LED Light Bar Hardware (E)

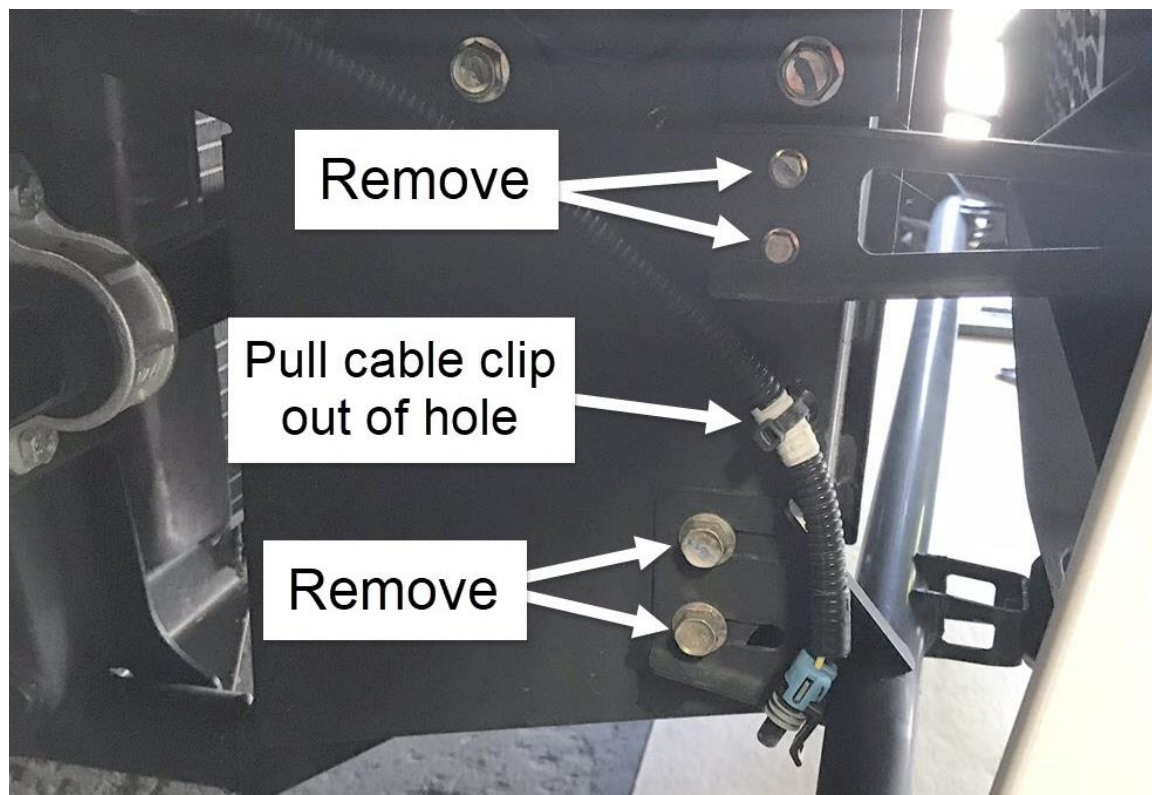
- ☐ (4) M6 x 16 button socket screws
- ☐ (4) M6 flat washers
- ☐ (4) M6 nylock nuts

Bumper Insert and Grille Hardware (F)

- ☐ (16) M5 x 16 button socket screws
- ☐ (16) Plastic flat washers

PREPARATION

Remove the factory front wing. Save the larger bolts from the bottom holes.

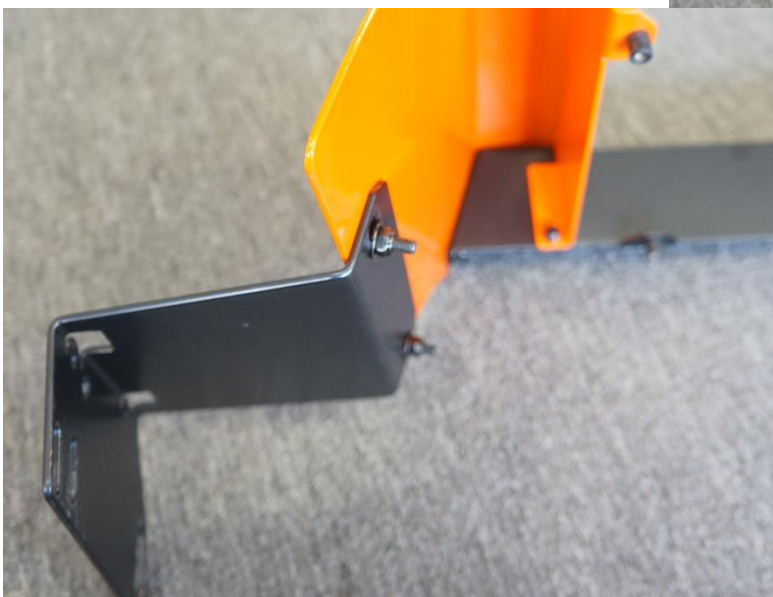
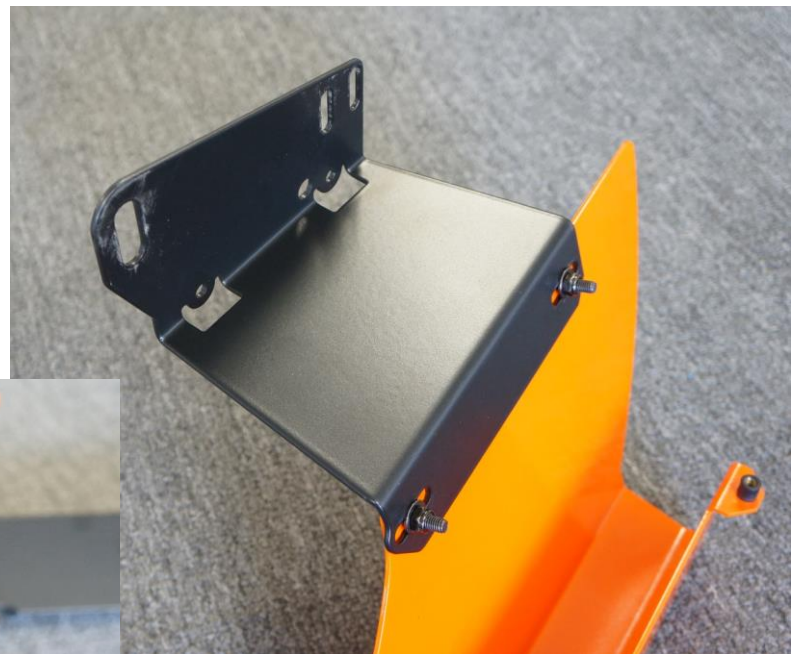


NOTE: If you have a 2018 you may not have a cable here.

Step 1 – Hardware A: Connect the two Center Sides together with the Center Bottom plate as shown below. Three screws per side, put the washers and nuts on the inside as shown and tighten.



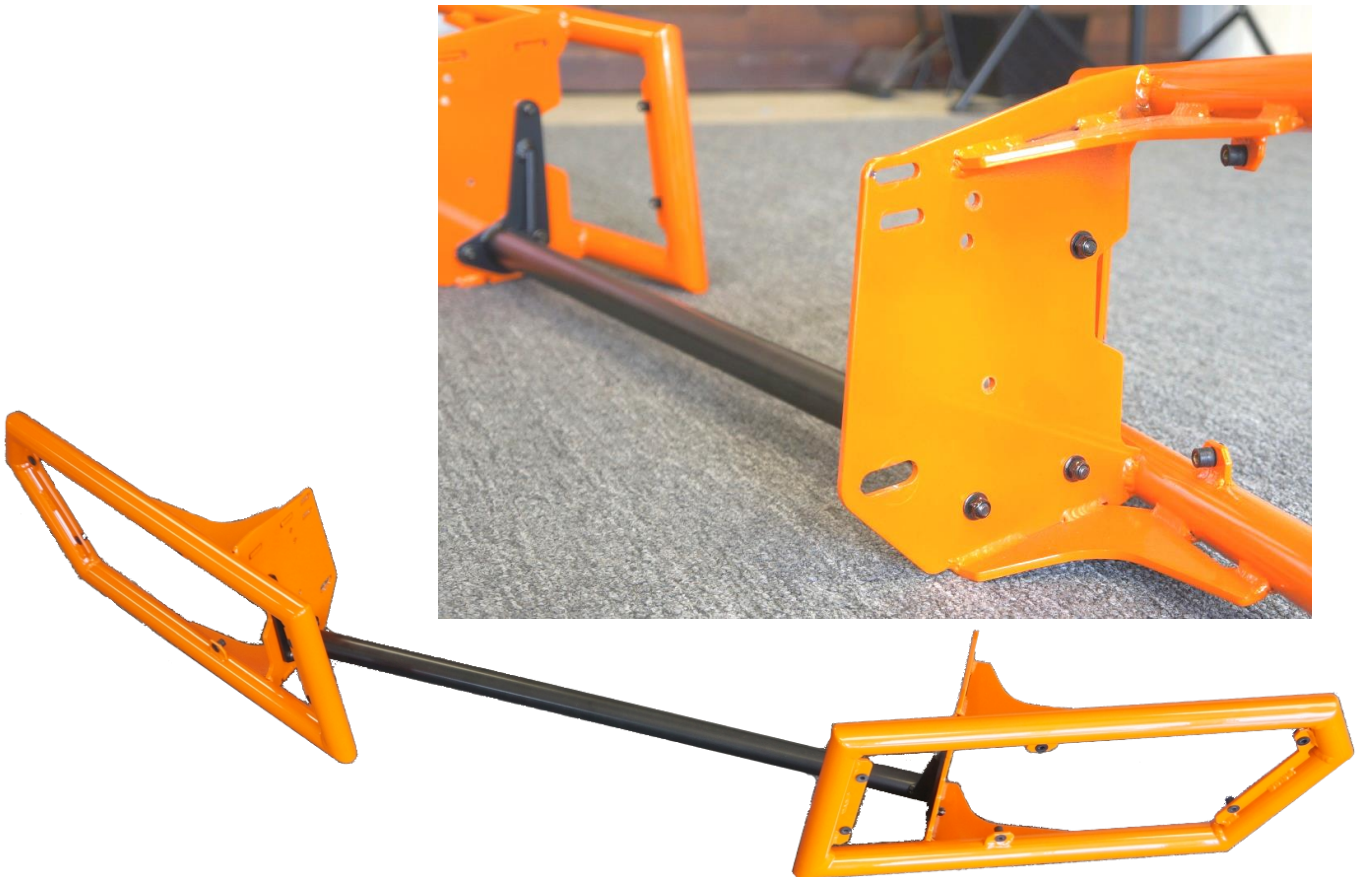
Step 2 – Hardware B: Attach the center mounting plates as shown here. **DO NOT FULLY TIGHTEN THESE SCREWS!** Each of these plates needs to be a little loose so that you can adjust the position once the entire bumper is on the vehicle.



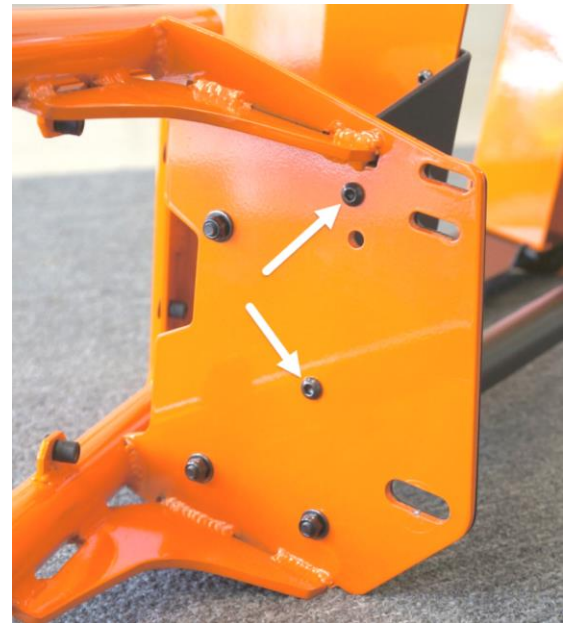
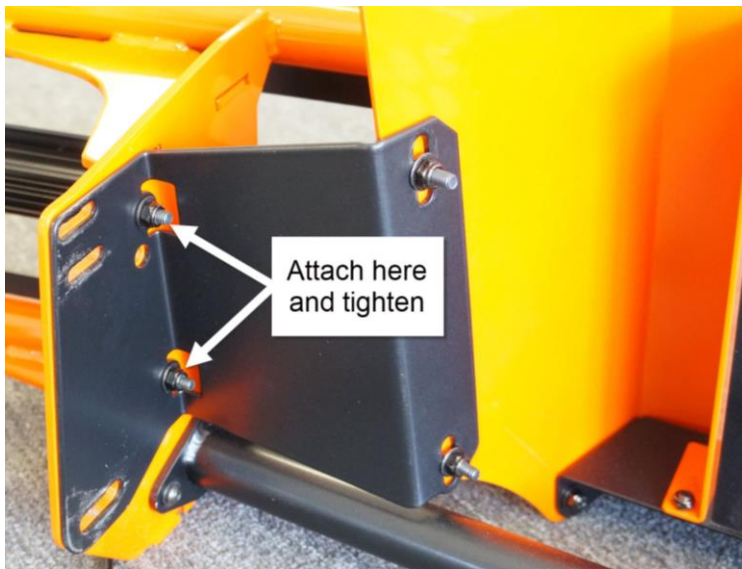
The finished **Center Assembly** should look like this:



Step 3 – Hardware C: The left and right Bumpers get connected together by the Crossbar as shown below. Screws go through the crossbar into the bumpers, then put flat washers and nylock nuts on the insides of the bumper and snug them but don't fully tighten. Make sure they are even with each other and at that point tighten all six screws and nuts fully. This now becomes the **Bumper Assembly**.



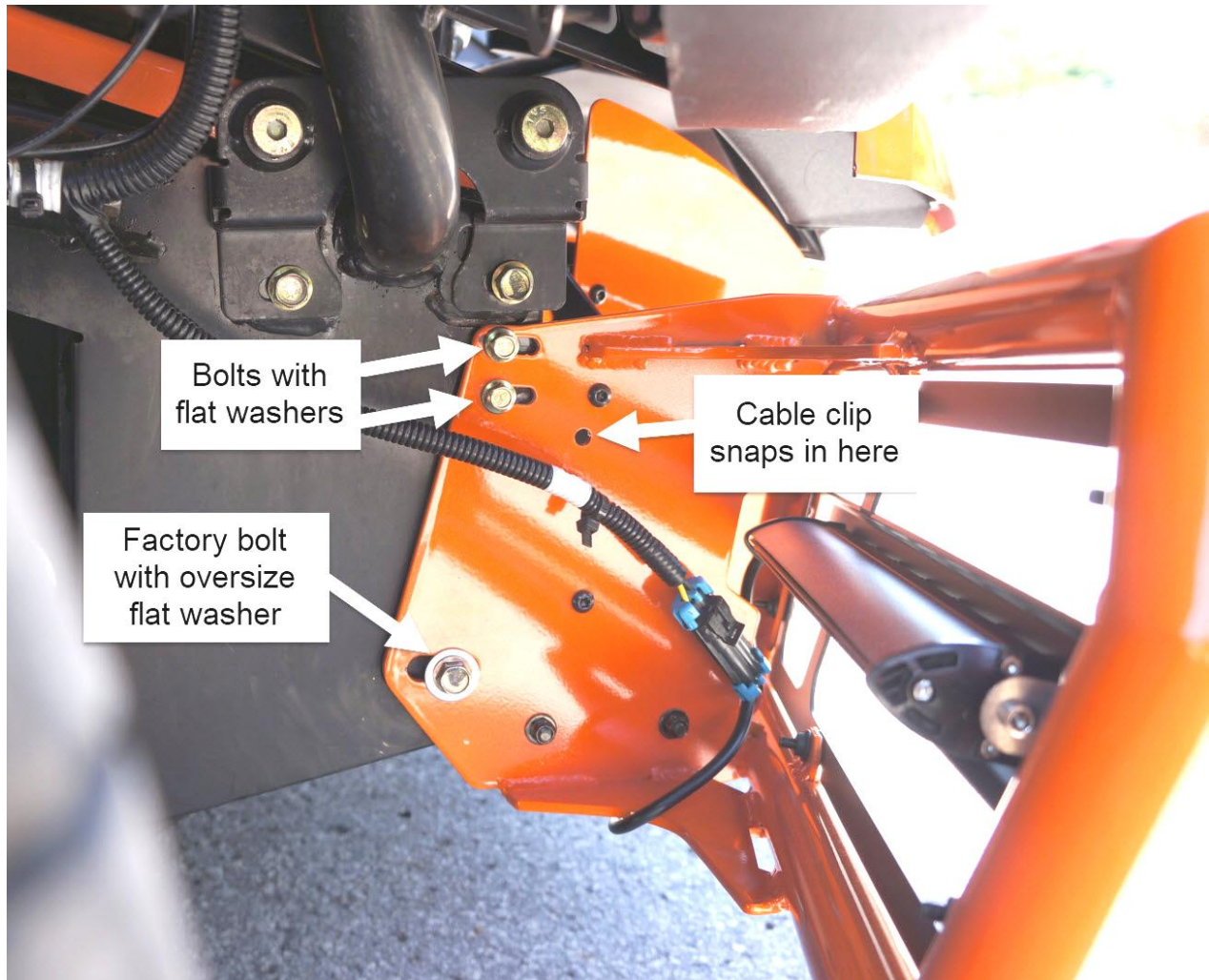
Step 4 – Hardware C: The Center Assembly now gets mounted to the Bumper Assembly as shown below. Set the Center assembly inside the middle of the Bumper Assembly and insert the remaining four screws from the outside in, then put flat washers and nylock nuts on the inside and tighten. Remember that the other two bolts in this plate should still be slightly loose in case you need to make adjustments to line up the Center Assembly with the hood. Because the front grille and bumper inserts have not been installed yet, you will have access to get at these screws for final alignment and tightening.



The completed bumper assembly should now look like this:

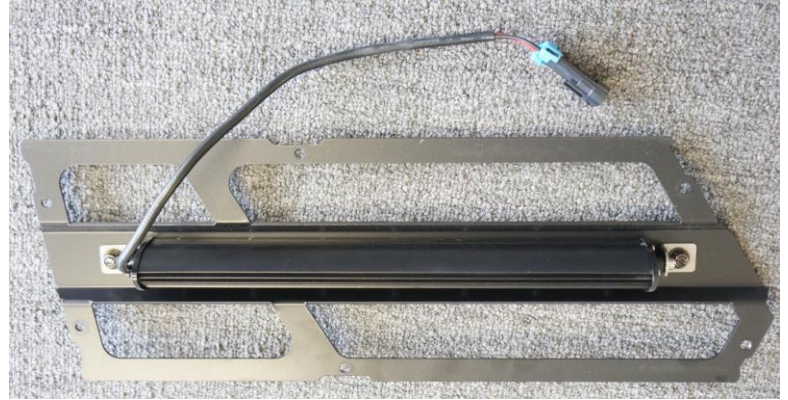


Step 5 – Hardware D: The bumper assembly can now be bolted to the Slingshot frame, back onto the same holes as the factory wing (see image below). Use the two bolts we provide for the upper two holes, and use the original factory bolt for the bottom but put our oversize flat washer on it first. Don't fully tighten these bolts until you check out the bumper alignment from the front. Adjust as necessary then tighten all six of these bolts.



Once the bumper is securely on the frame, make final adjustments to the Center Assembly so that it is evenly lined up with the hood, and with minimal gap between the center and hood. Make sure the hood is fully closed and latched before you make final adjustments. Tighten all 8 of the screws and nuts that were left loose once everything is lined up.

Step 6 – Hardware E: The LED light bar gets installed to the back side of the bumper Inserts as shown below. The nuts and washers go on the LED bar side of the insert. Make sure you have the cable on the inside of the panel (see below).



Step 7 – Hardware F: The bumper inserts and center grille can now be mounted into the rubber well nuts on the bumpers and center assembly. A plastic flat washer goes under the head of each screw, and make sure you do not over-tighten these screws or you could damage the well nuts! The rubber well nuts swell up and will hold these inserts in place, so you just need to make sure the screws are snug, not cranked down hard.



LED Light Bars

If your Slingshot has wiring harnesses behind the factory wing, the MadStad LED light bars will plug right in. Use two small zip ties to prevent any wires from hanging below the vehicle. Those factory harnesses run up under the dashboard to a single connector, but you will have to remove the radio and dig through the wiring to find this connector. To activate the light bars you will need to purchase an OEM-style dash switch and relay that will plug into the “Fog Light” receptacle on the fuse box. These parts are NOT included with the Ultimate Bumper.

You will find that the LED light bars are quite bright and should not be used when there is oncoming traffic.

Disclaimer

Neither MadStad Engineering nor its owners shall be liable for any damages, consequential or inconsequential, resulting from the use of our products. Installation of any of our products constitutes acceptance of these terms. It is the responsibility of the user to make sure the product is mounted properly, and all fasteners are tightened securely before putting the vehicle in motion.



1451 E. Jefferson St., Brooksville, FL 33523 U.S.A.

Phone: 352-848-3646

Web Site: <http://www.madstad.com>

Email: support@madstad.com

Thank you for your support, and ride safely!