

Alpha Stage 1 Turbo Kit Adendum

Getting Started.

1. Remove the 10mm Head bolt holding the dipstick tube to the intake manifold. Do not remove the tube.

2. Remove the 2 bolts holding the fuel rail to the cylinder head. Pull and remove the fuel rail off the head. Do not remove the injectors from the rail. Be sure to unplug the MAP sensor connector before pulling the fuel rail off.

3. Remove the throttle body connector and the 4 bolts holding the throttle body to the intake manifold. Disconnect the plastic tube from the manifold to the solenoid on the rear of the cylinder head.

4. Now we are ready to take off the manifold. Remove the 5 bolts and 2 nuts holding the manifold to the cylinder head. Pull the manifold away from the head while rotating it toward you. NOTE: you do not need to take the manifold completely out if you do not wish.

5. Take a 3/32 drill bit and drill out the hole shown in Fig 1 and Fig 2. IMPORTANT!! You only need to open up the hole. DO NOT drill all the way through the manifold. The drill only needs to go in about 1/8 of an inch till you feel it bottom out. Blow out the holes and the manifold.

6. Reinstall the manifold in the reverse procedure as the installation.

Technical Support:
Phone: 715-600-2024
Email: Henry@AlphaPowersport.com

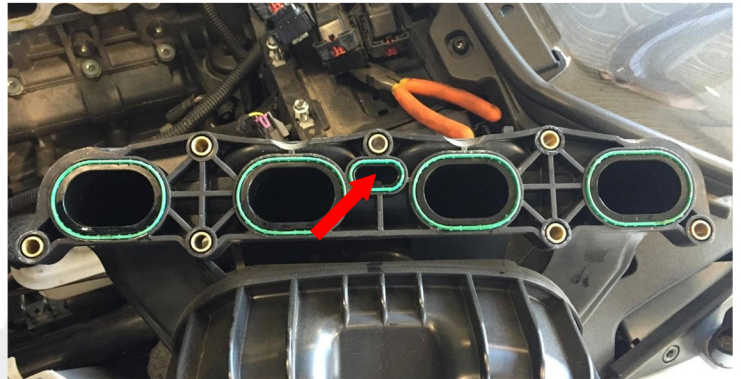


Fig 1

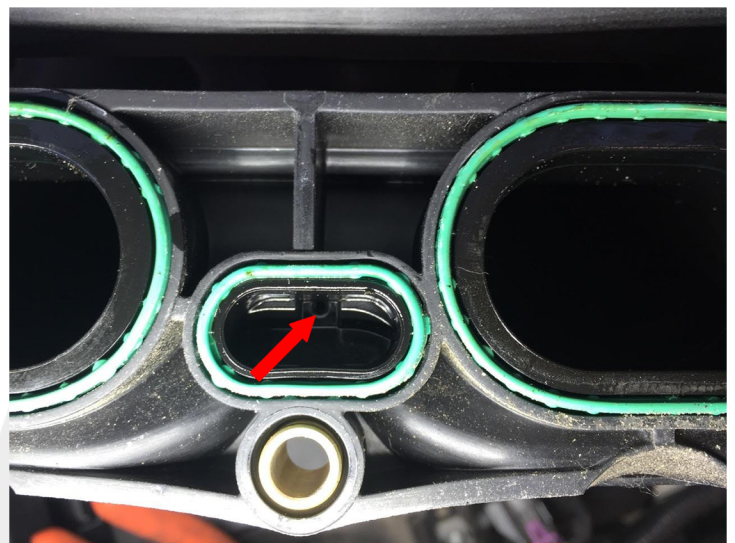


Fig 2